

WISCONSIN COUNTY  
 WALWORTH COUNTY  
 HENRY COUNTY  
 ILLINOIS

TOWNSHIP 1 NORTH R. 17 E.  
 TOWNSHIP 1 NORTH R. 17 E.  
 TOWNSHIP 1 NORTH R. 17 E.

T. 1 N. RANGE 17 EAST  
 T. 1 N. RANGE 18 EAST

SHEET 3  
SHEET 6

23  
1/4 IN. R.V. 1/6 E.

25  
1/4 IN. R.V. 1/6 E.

27  
1/4 IN. R.V. 1/6 E.

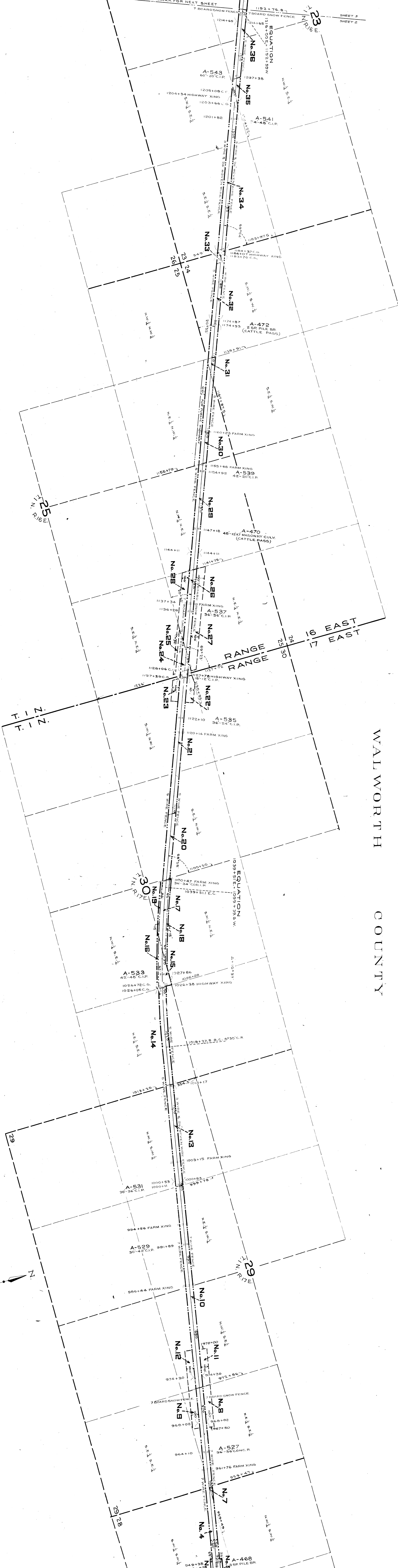
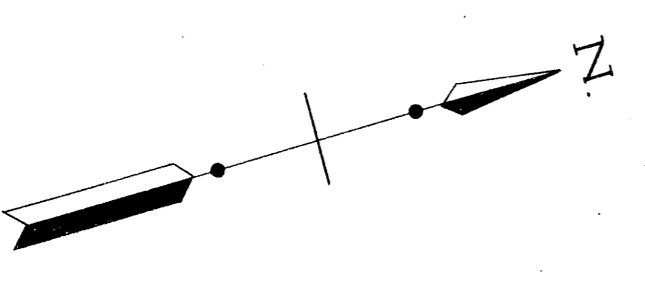
30  
1/4 IN. R.V. 1/6 E.

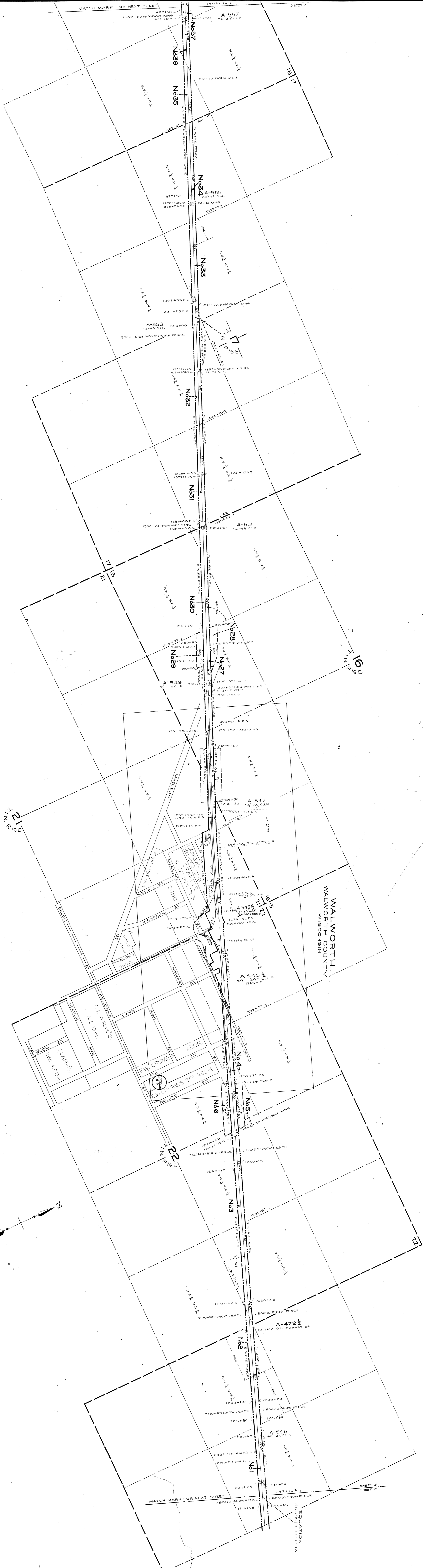
29  
1/4 IN. R.V. 1/6 E.

29  
1/4 IN. R.V. 1/6 E.

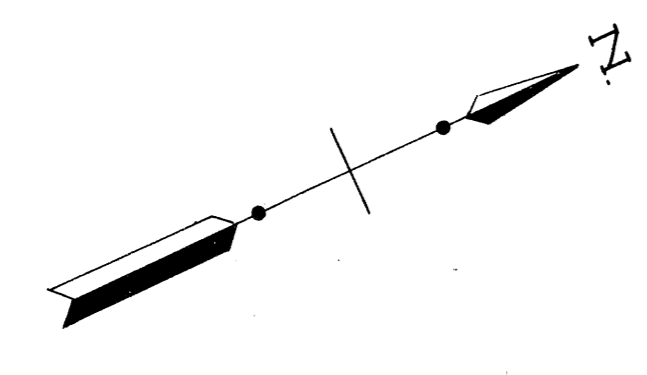
WALWORTH COUNTY

16 EAST  
17 EAST  
RANGE  
RANGE



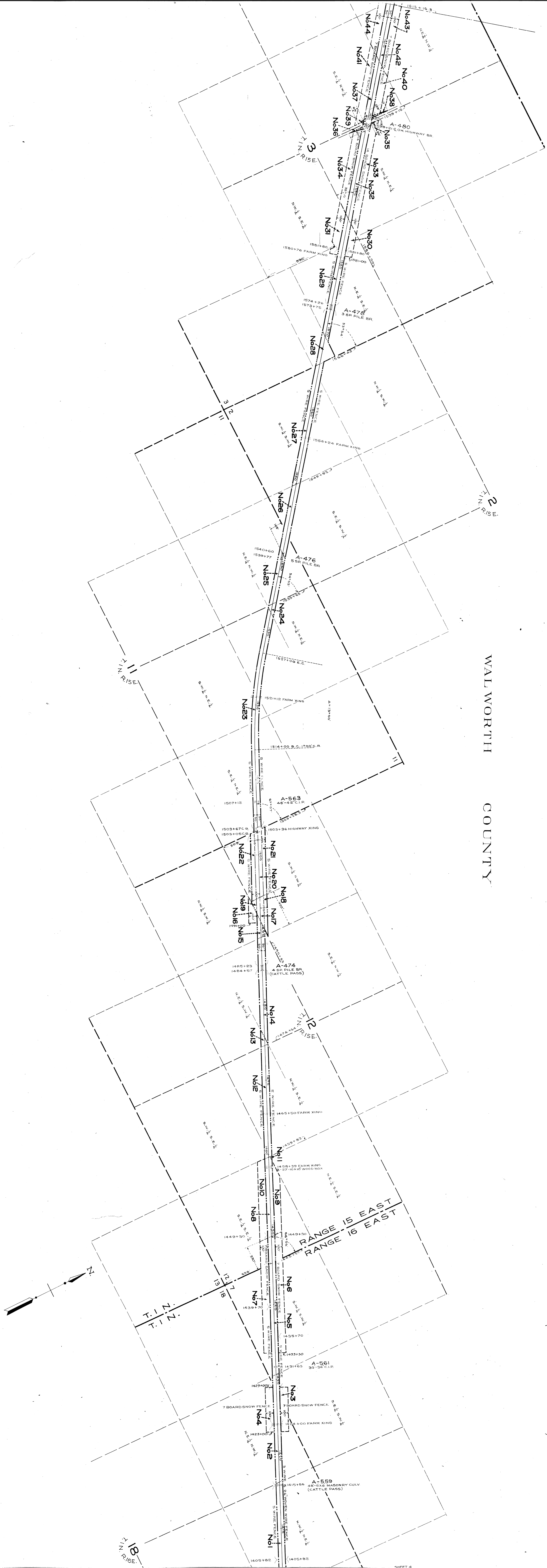


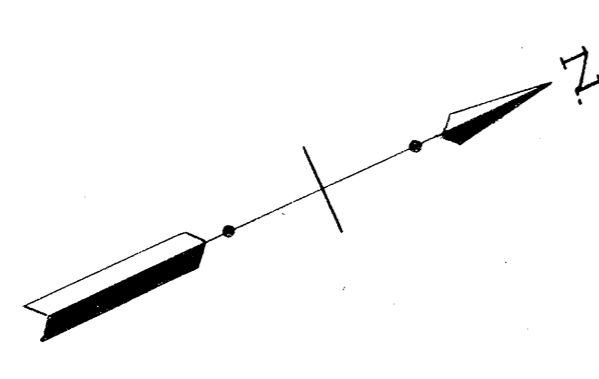
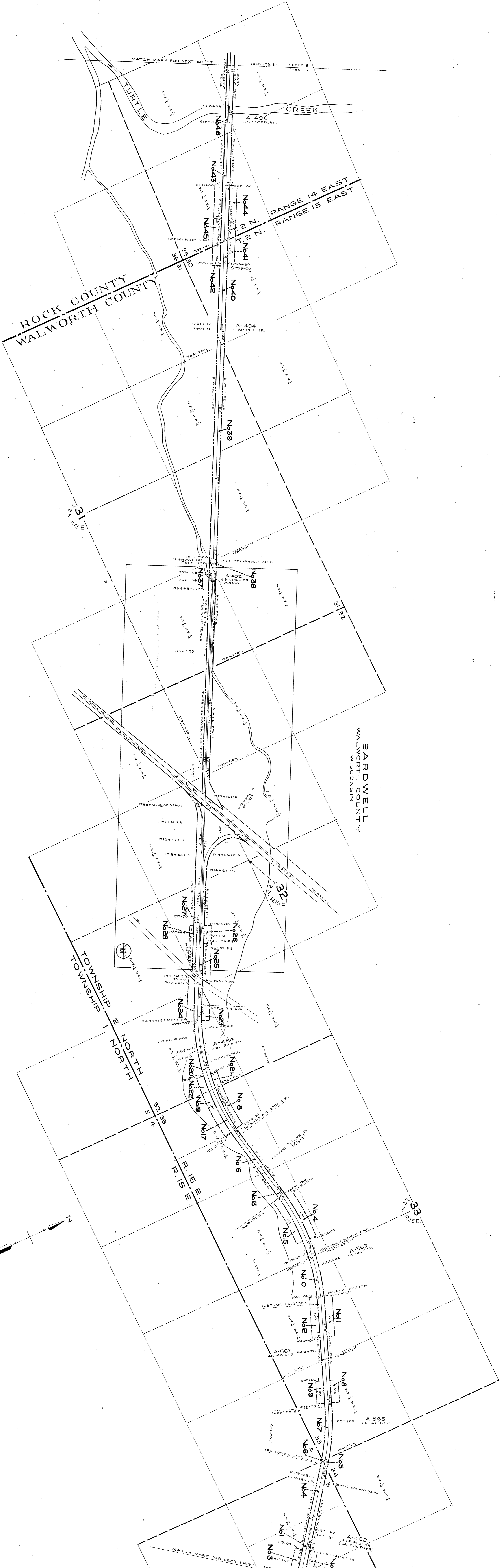
A



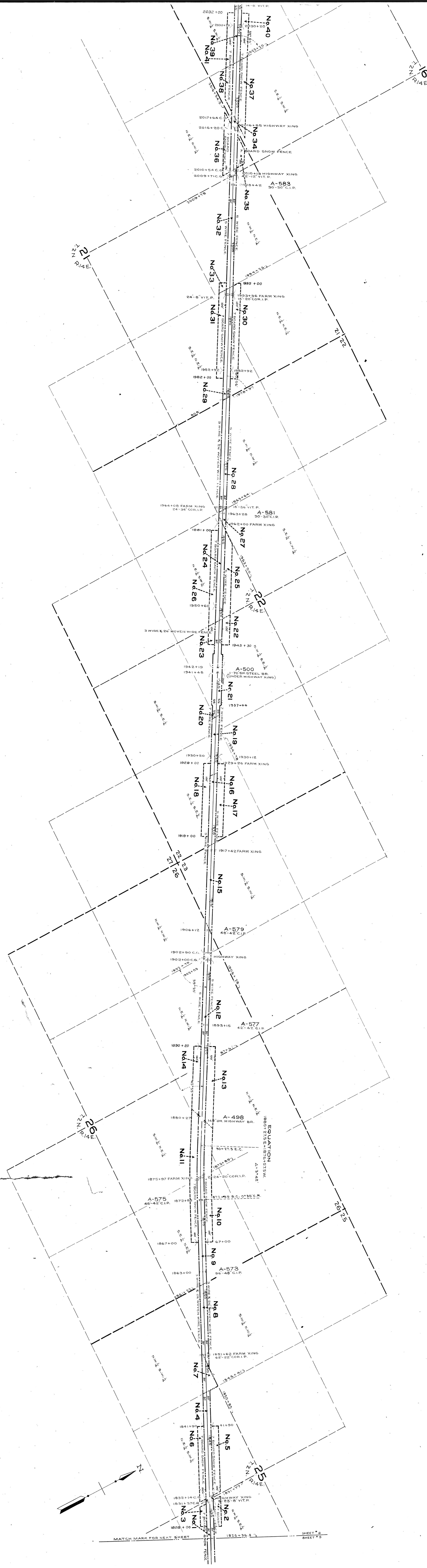
WALWORTH  
COUNTY  
WISCONSIN

WALWORTH COUNTY

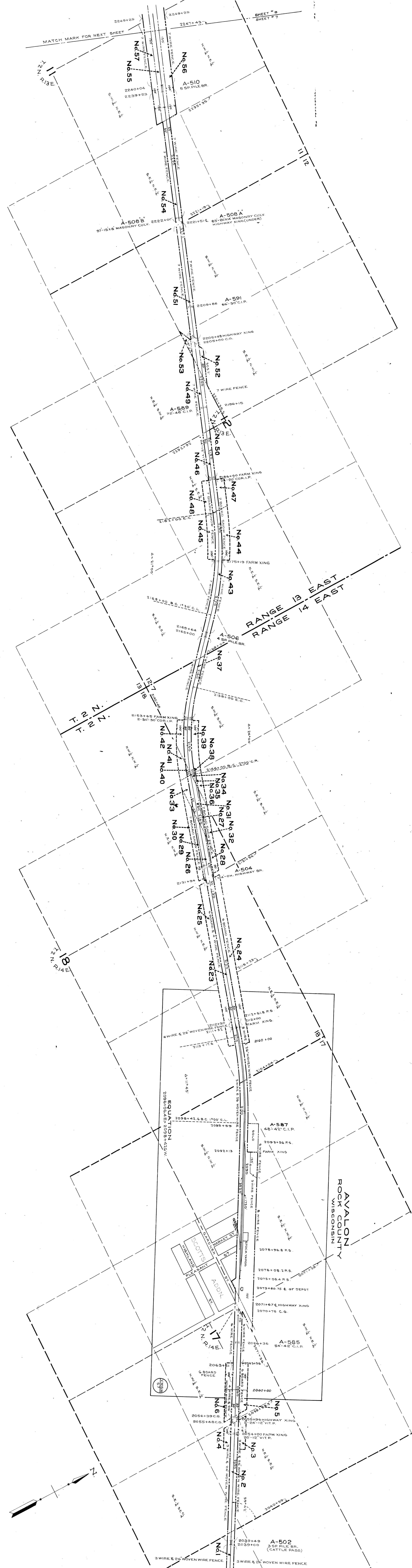




ROCK COUNTY



SHEET # 6  
SHEET # 5



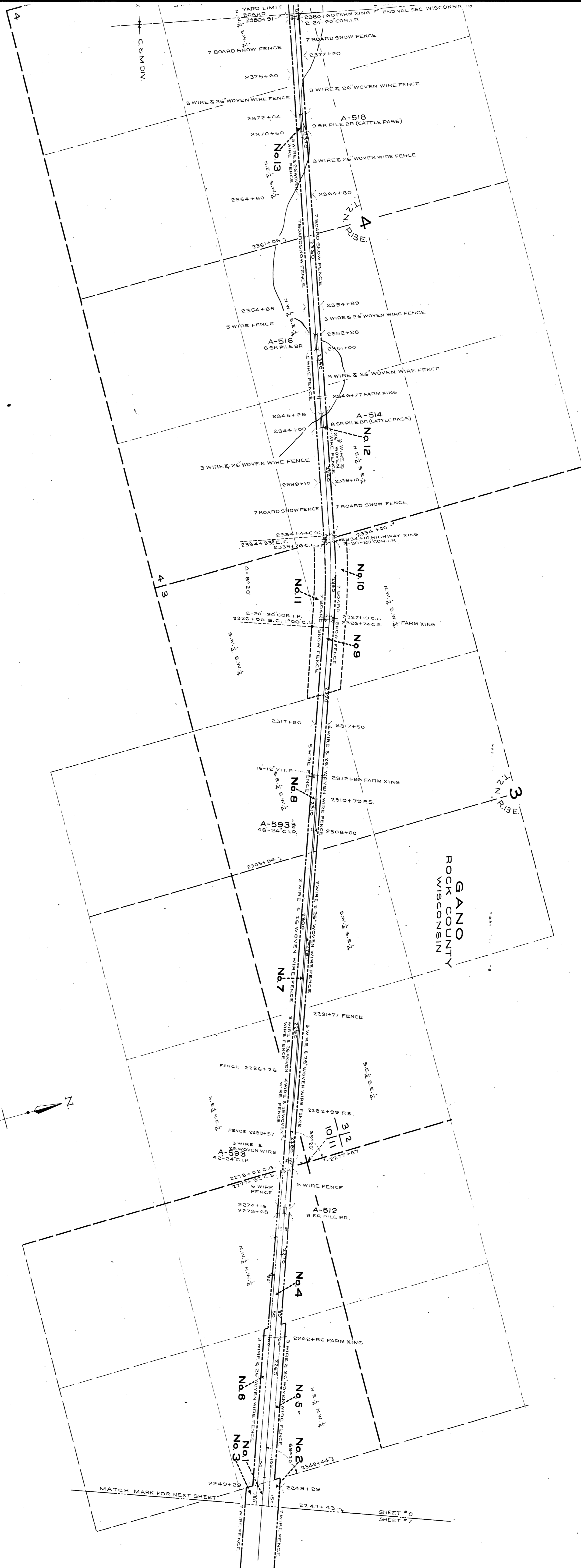
AVALON  
ROCK COUNTY  
WISCONSIN

RANGE 13 EAST  
RANGE 14 EAST

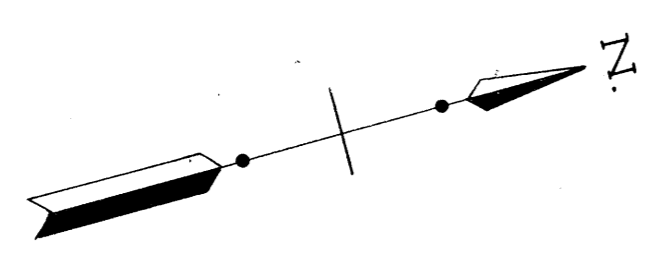
A-502  
3 SP PILE BR.  
(CATTLE PASS)

MATCH MARK FOR NEXT SHEET 2033+86.8 SHEET #7

MATCH MARK FOR NEXT SHEET 2249+29 SHEET #8 SHEET #7



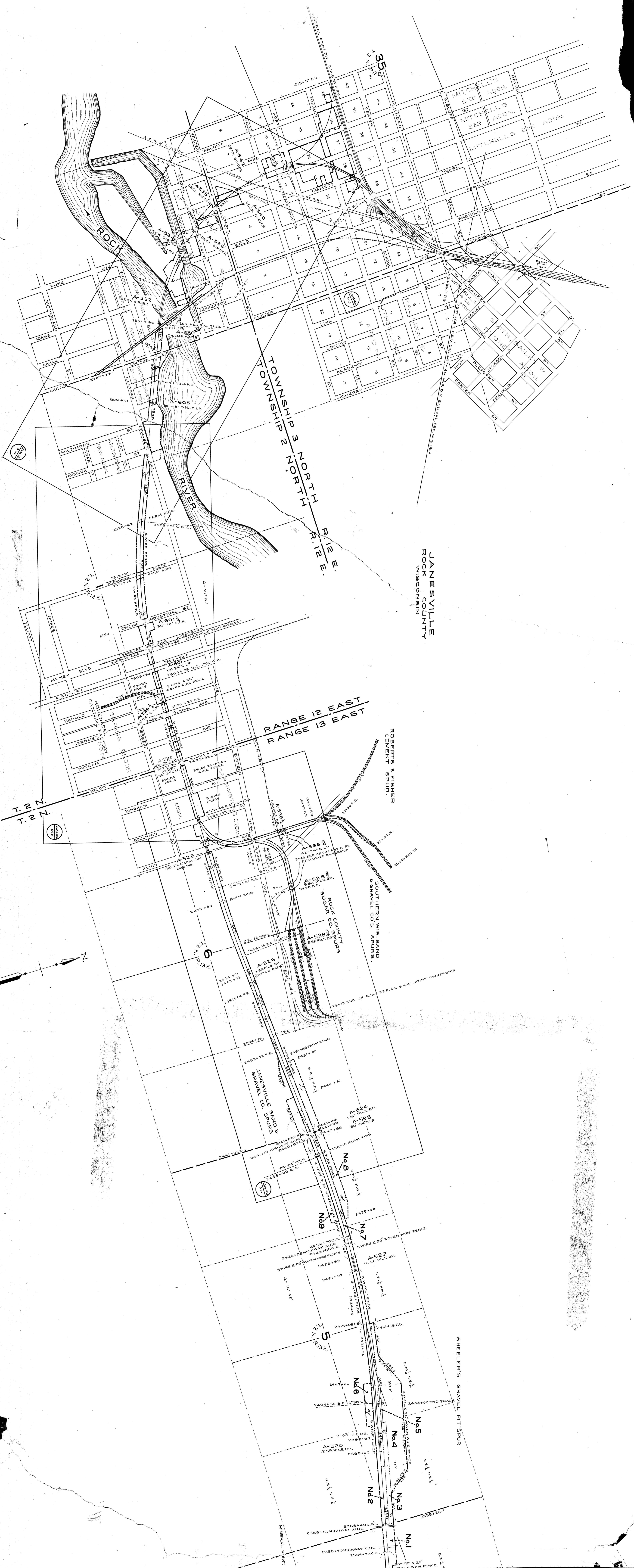
GANO  
ROCK COUNTY  
WISCONSIN



MATCH MARK FOR NEXT SHEET

SHEET # 8  
SHEET # 7





JANESVILLE  
ROCK COUNTY  
WISCONSIN

RANGE 12 EAST  
RANGE 13 EAST

ROBERTS & FISHER  
CEMENT SPUR.

SOUTHERN WIS. SAND  
& GRAVEL COS. SPURS.

ROCK COUNTY  
SAND & GRAVEL CO. SPURS

WHEELER'S GRAVEL PIT SPUR

TOWNSHIP 3 NORTH  
R. 12 E.  
T. 21 N.

ROCK RIVER

ADAMS

CENTER

MILITARY

ARMOUR

INDUSTRIAL ST.

MC KEY BLVD.

C.E.N.W. RY.

HAROLD

JEROME

PUTHAM

BELOIT

BINGHAM

BOUCHARD

PLIN

2451+73

2451+73

2451+73

2451+73

2451+73

2451+73

2451+73

2451+73

2451+73

2451+73

2451+73

2451+73

2451+73