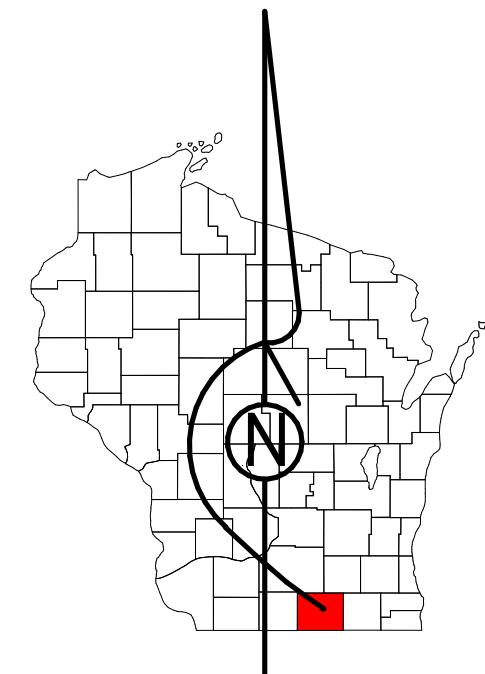


Property Division Map

Town
of
Milton

T. 4 N. - R. 13 E.

Section 20 NE



STATE OF WISCONSIN
COUNTY OF ROCK

PREPARED BY

REAL PROPERTY DESCRIPTION
DEPARTMENT

USING

ROCK COUNTY
GEOGRAPHIC INFORMATION SYSTEM

DUPLICATION OF THIS MAP PROHIBITED
WITHOUT THE WRITTEN CONSENT OF THE
REAL PROPERTY DESCRIPTION DEPARTMENT.

THIS MAP WAS PREPARED PURSUANT
TO SECTION 70.09 WIS. STATS.
USING PUBLIC RECORDS. IT IS NOT INTENDED
TO BE A SUBSTITUTE FOR AN
ACTUAL FIELD SURVEY
AND IS ADVISORY ONLY.

DISTANCES SHOWN ON THIS
MAP WERE PRODUCED BY
THE GIS SYSTEM AND ARE
FOR REFERENCE ONLY.
SEE DOCUMENT OF RECORD
FOR ACTUAL DISTANCE.

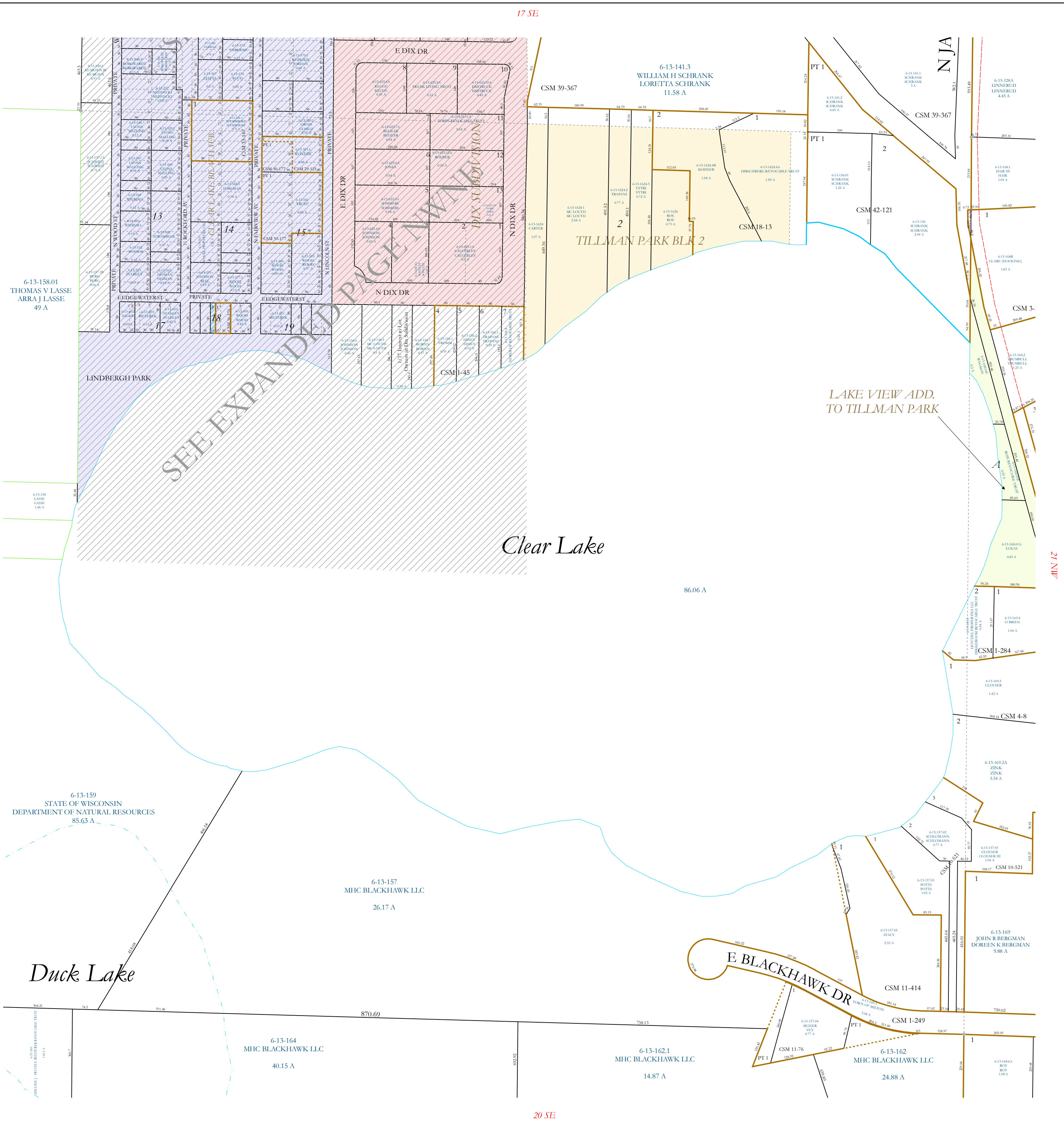
0 25 50 100 150 200
Feet

- | | | | |
|--|-------------|--|-------------|
| | Gap | | dam |
| | Overlap | | easement |
| | CSM | | hydro |
| | CSMHYDRO | | lots |
| | CSMLOT | | parcels |
| | CSMLOTHYDRO | | parcelhydro |
| | MFL | | roadrw |

See Pages

January 1, 2023

20 NE



SEE EXPANDED PAGE MAP

Clear Lake

Duck Lake

E BLACKHAWK DR

TILLMAN PARK BLK 2

LAKE VIEW ADD.
TO TILLMAN PARK

6-13-158.01
THOMAS V LASSE
ARRA J LASSE
49 A

6-13-141.3
WILLIAM H SCHRANK
LORETTA SCHRANK
11.58 A

6-13-157
MHC BLACKHAWK LLC
26.17 A

6-13-164
MHC BLACKHAWK LLC
40.15 A

6-13-162.1
MHC BLACKHAWK LLC
14.87 A

6-13-162
MHC BLACKHAWK LLC
24.88 A

6-13-169
JOHN R BERGMAN
DOREEN K BERGMAN
9.88 A

17 SE

20 SE

21 NE