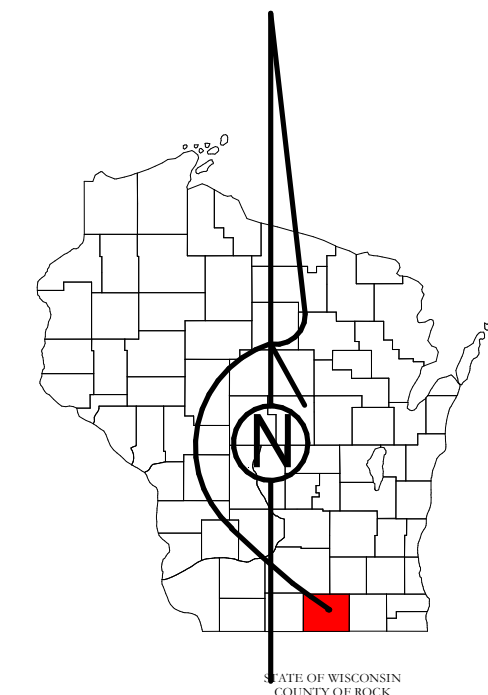


# Property Division Map

Town  
of  
Fulton

T. 4 N. - R. 12 E.

Section 12 SWSW



PREPARED BY

REAL PROPERTY DESCRIPTION  
DEPARTMENT

USING

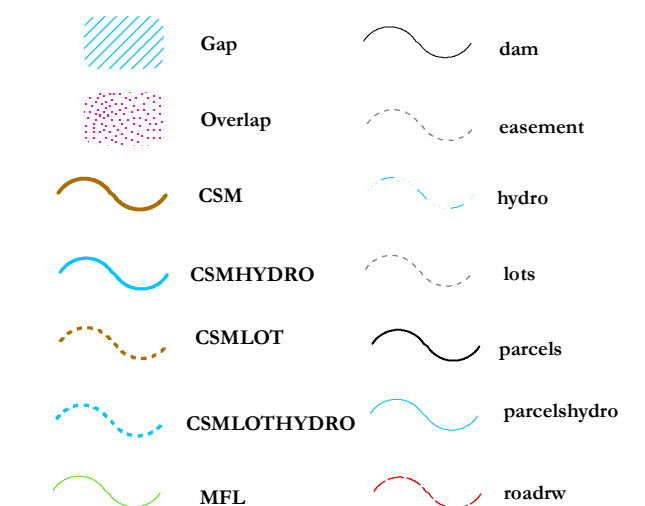
ROCK COUNTY  
GEOGRAPHIC INFORMATION SYSTEM

DUPLICATION OF THIS MAP PROHIBITED  
WITHOUT THE WRITTEN CONSENT OF THE  
REAL PROPERTY DESCRIPTION DEPARTMENT.

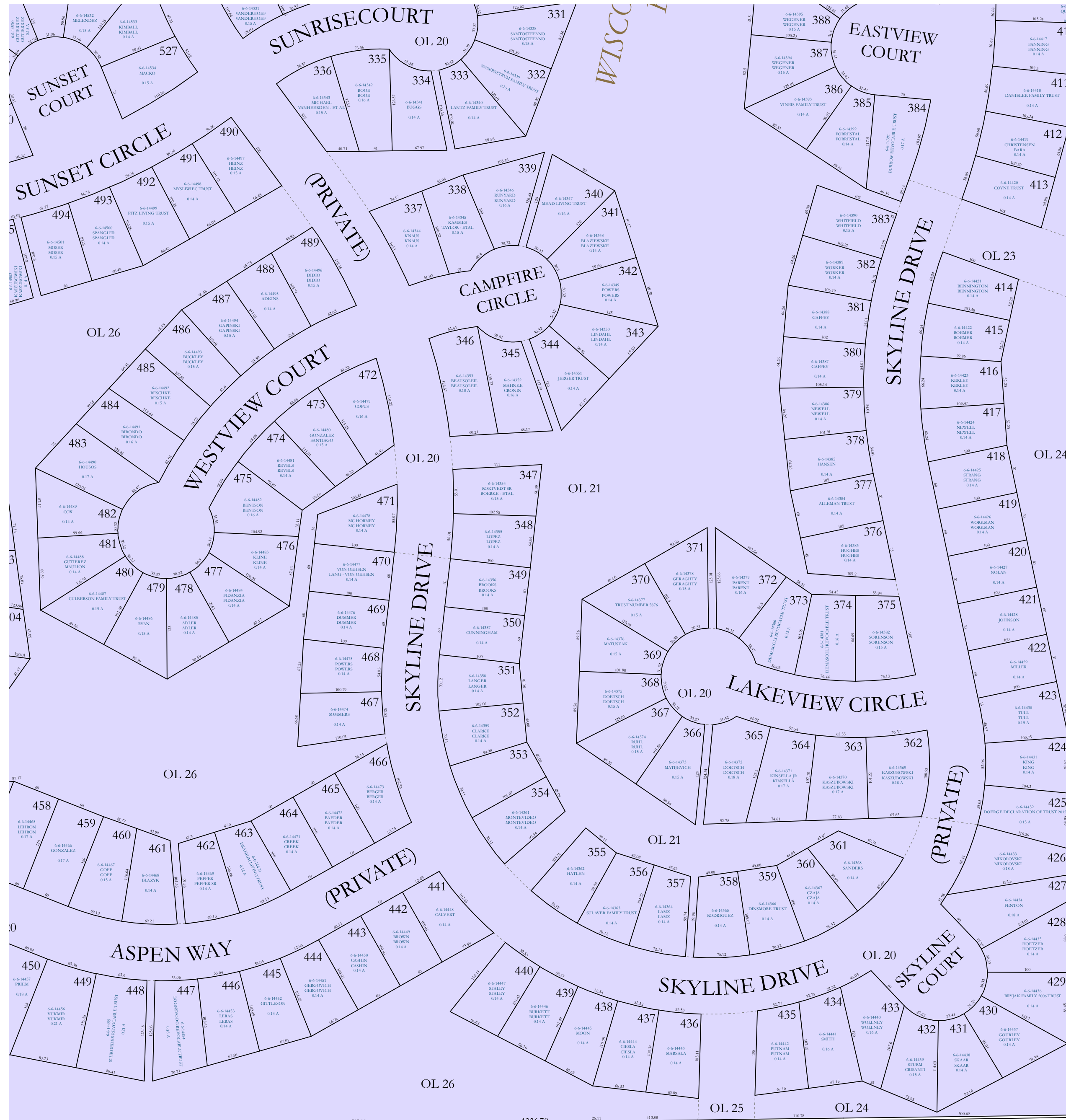
THIS MAP WAS PREPARED PURSUANT  
TO SECTION 70.09 WIS. STATS.  
USING PUBLIC RECORDS. IT IS NOT INTENDED  
TO BE A SUBSTITUTE FOR AN  
ACTUAL FIELD SURVEY  
AND IS ADVISORY ONLY.

DISTANCES SHOWN ON THIS  
MAP WERE PRODUCED BY  
THE GIS SYSTEM AND ARE  
FOR REFERENCE ONLY.  
SEE DOCUMENT OF RECORD  
FOR ACTUAL DISTANCE.

0 12.5 25 50 75 100  
Feet



CSM 8-34



12 NWSW

11 SESE

TOWN OF FULTON  
385 A

911.65

See Pages  
January 1, 2023

12 SWSW