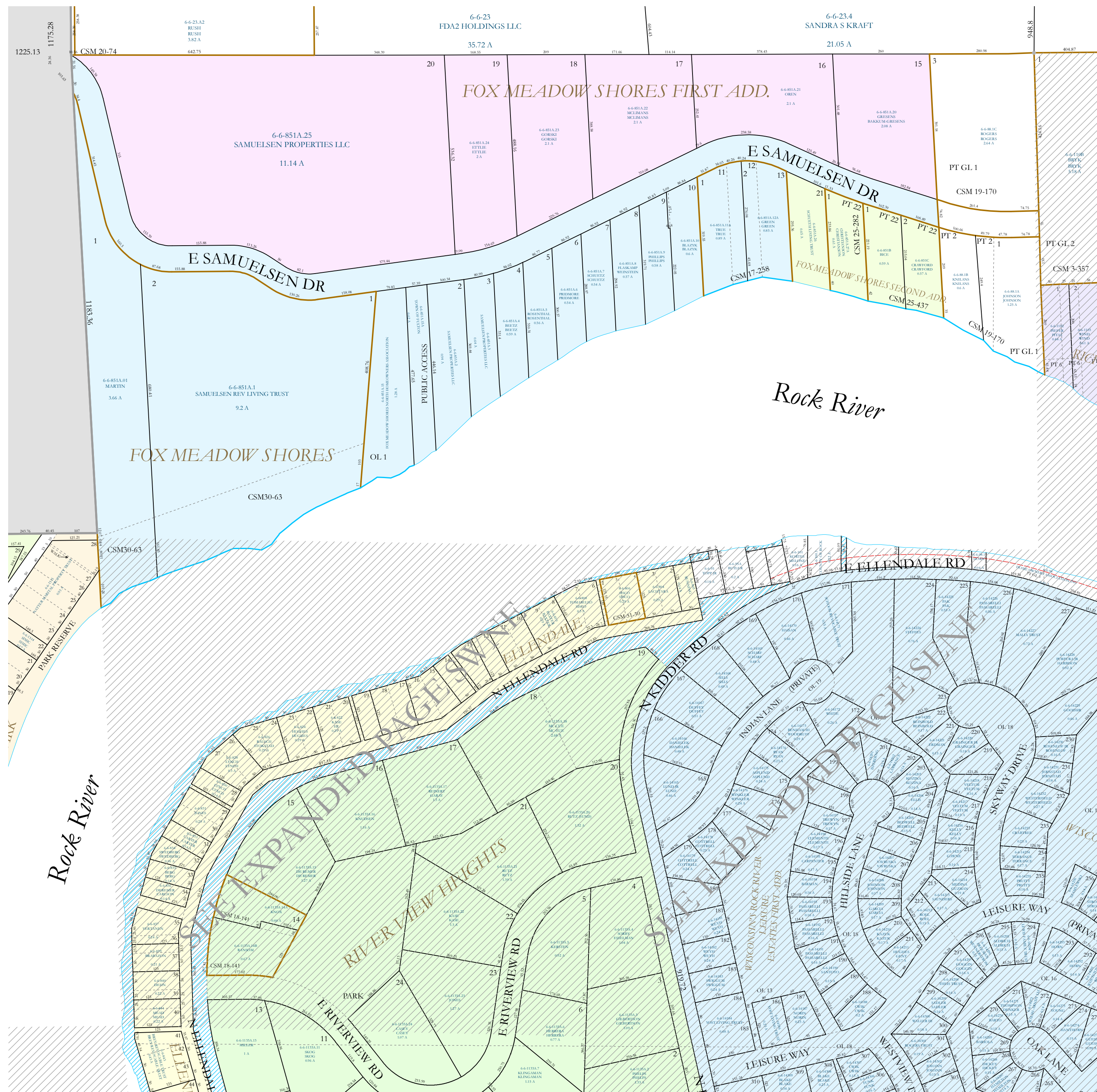


02 SE



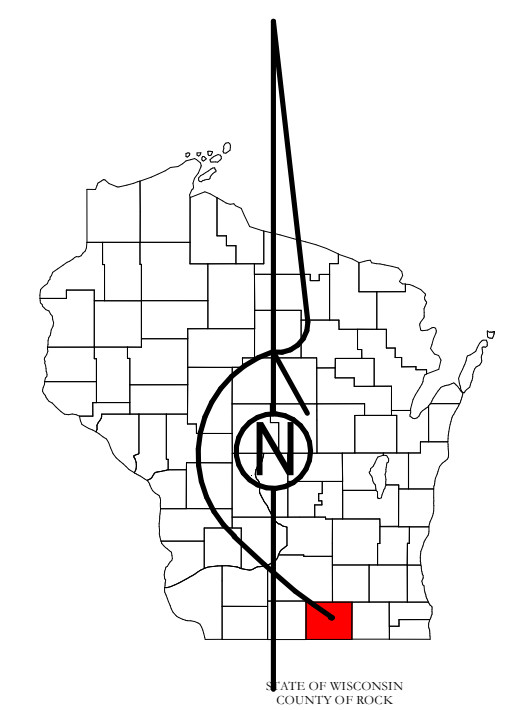
11 NW

12 NW

Property Division Map

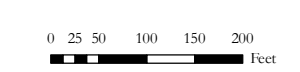
Town of Fulton

T. 4 N. - R. 12 E. Section 11 NE



PREPARED BY
REAL PROPERTY DESCRIPTION DEPARTMENT
 USING
ROCK COUNTY GEOGRAPHIC INFORMATION SYSTEM

DUPLICATION OF THIS MAP PROHIBITED WITHOUT THE WRITTEN CONSENT OF THE REAL PROPERTY DESCRIPTION DEPARTMENT.
 THIS MAP WAS PREPARED PURSUANT TO SECTION 70.09 WIS. STAT. USING PUBLIC RECORDS. IT IS NOT INTENDED TO BE A SUBSTITUTE FOR AN ACTUAL FIELD SURVEY AND IS ADVISORY ONLY.
 DISTANCES SHOWN ON THIS MAP WERE PRODUCED BY THE GIS SYSTEM AND ARE FOR REFERENCE ONLY. SEE DOCUMENT OF RECORD FOR ACTUAL DISTANCE.



- Gap
- Overlap
- CSM
- CSMHYDRO
- CSMLOT
- CSMLOTHYDRO
- MFL
- dam
- easement
- hydro
- lots
- parcels
- parcelshydro
- roadrv

See Pages
 January 1, 2023

11 NE

11 SE