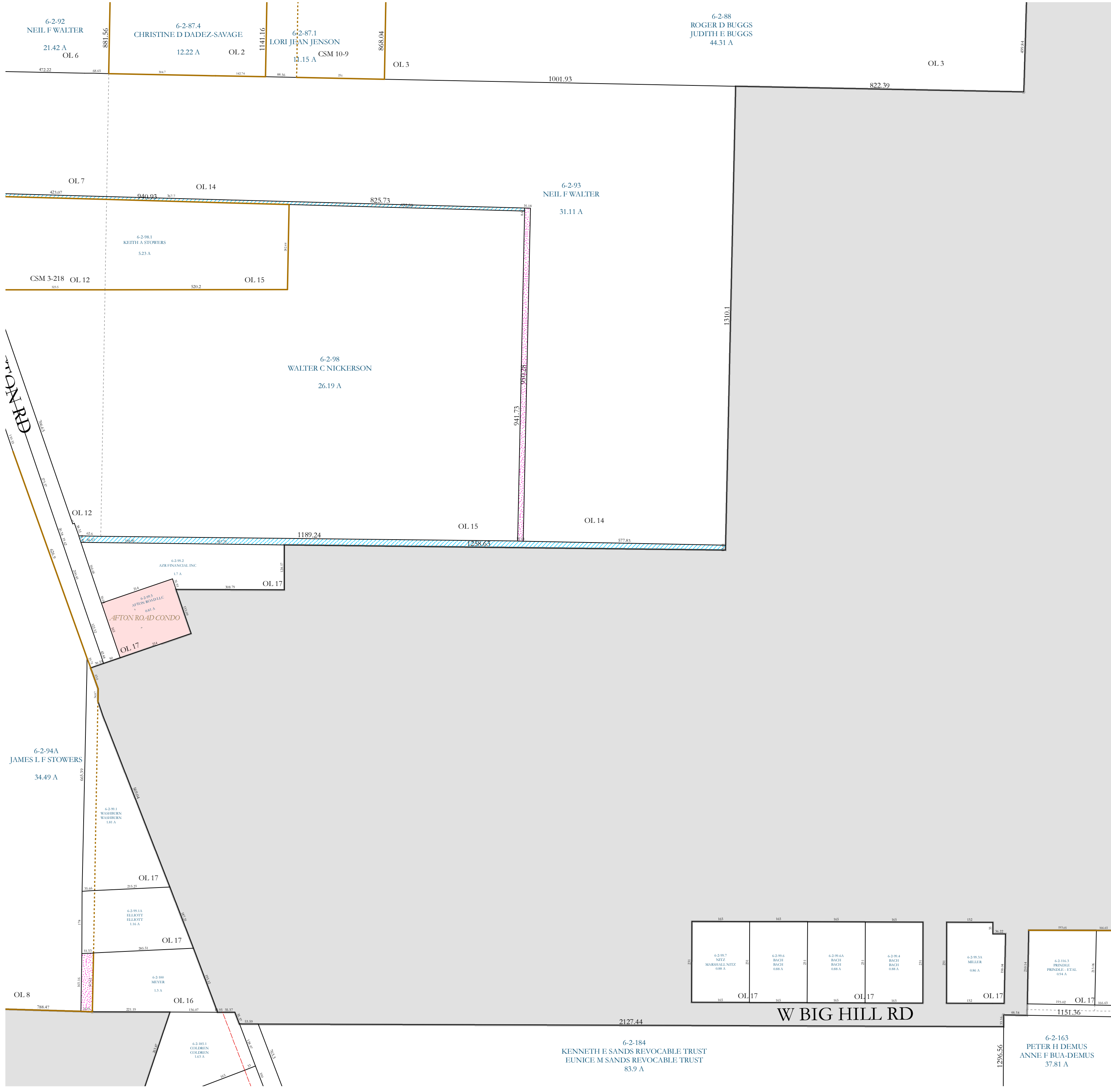


10 NE

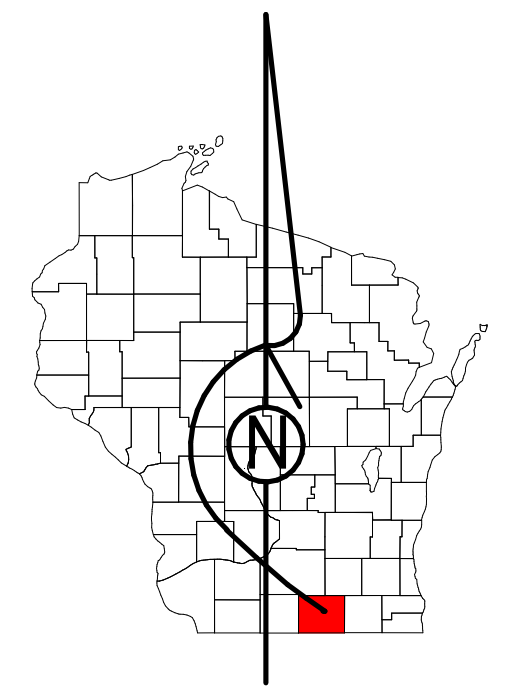


Property Division Map

Town of Beloit

T. 1 N. - R. 12 E.

Section 10 SE



STATE OF WISCONSIN
COUNTY OF ROCK

PREPARED BY

REAL PROPERTY DESCRIPTION DEPARTMENT

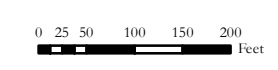
USING

ROCK COUNTY GEOGRAPHIC INFORMATION SYSTEM

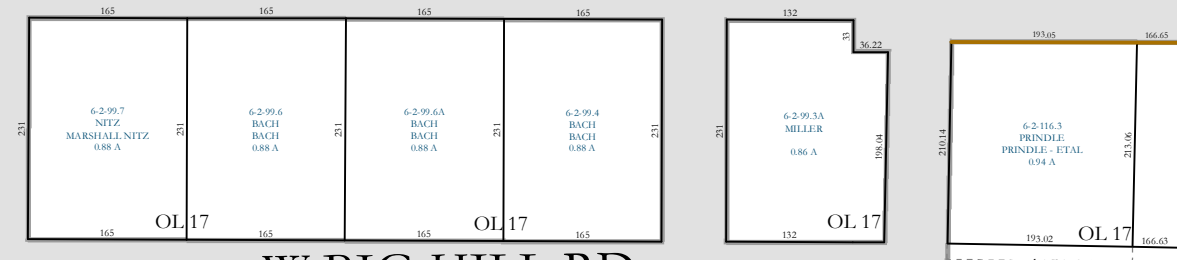
DUPLICATION OF THIS MAP PROHIBITED WITHOUT THE WRITTEN CONSENT OF THE REAL PROPERTY DESCRIPTION DEPARTMENT.

THIS MAP WAS PREPARED PURSUANT TO SECTION 70.09 WIS. STATS. USING PUBLIC RECORDS. IT IS NOT INTENDED TO BE A SUBSTITUTE FOR AN ACTUAL FIELD SURVEY AND IS ADVISORY ONLY.

DISTANCES SHOWN ON THIS MAP WERE PRODUCED BY THE GIS SYSTEM AND ARE FOR REFERENCE ONLY. SEE DOCUMENT OF RECORD FOR ACTUAL DISTANCE.



- Gap
- Overlap
- CSM
- CSMHYDRO
- CSMLOT
- CSMLOTHYDRO
- MFL
- dam
- easement
- hydro
- lots
- parcels
- parcelshydro
- roadrw



6-2-184
KENNETH E SANDS REVOCABLE TRUST
EUNICE M SANDS REVOCABLE TRUST
83.9 A

6-2-163
PETER H DEMUS
ANNE F BUA-DEMUS
37.81 A

See Pages

January 1, 2023

10 SE