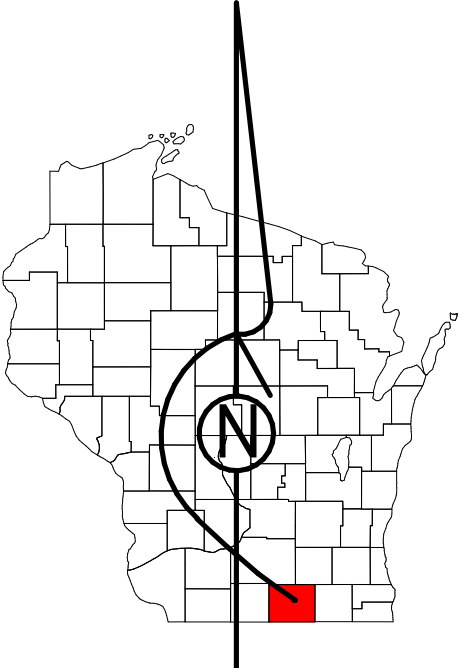


# Property Division Map

City  
of  
Milton

T. 4 N. - R. 13 E.  
Section 36 NE



STATE OF WISCONSIN  
COUNTY OF ROCK

PREPARED BY

REAL PROPERTY DESCRIPTION  
DEPARTMENT

USING

ROCK COUNTY  
GEOGRAPHIC INFORMATION SYSTEM

DUPLICATION OF THIS MAP PROHIBITED  
WITHOUT THE WRITTEN CONSENT OF THE  
REAL PROPERTY DESCRIPTION DEPARTMENT.

THIS MAP WAS PREPARED PURSUANT  
TO SECTION 70.09 WIS. STATS.  
USING PUBLIC RECORDS. IT IS NOT INTENDED  
TO BE A SUBSTITUTE FOR AN  
ACTUAL FIELD SURVEY  
AND IS ADVISORY ONLY.

DISTANCES SHOWN ON THIS  
MAP WERE PRODUCED BY  
THE GIS SYSTEM AND ARE  
FOR REFERENCE ONLY.  
SEE DOCUMENT OF RECORD  
FOR ACTUAL DISTANCE.

0 25 50 100 150 200  
feet

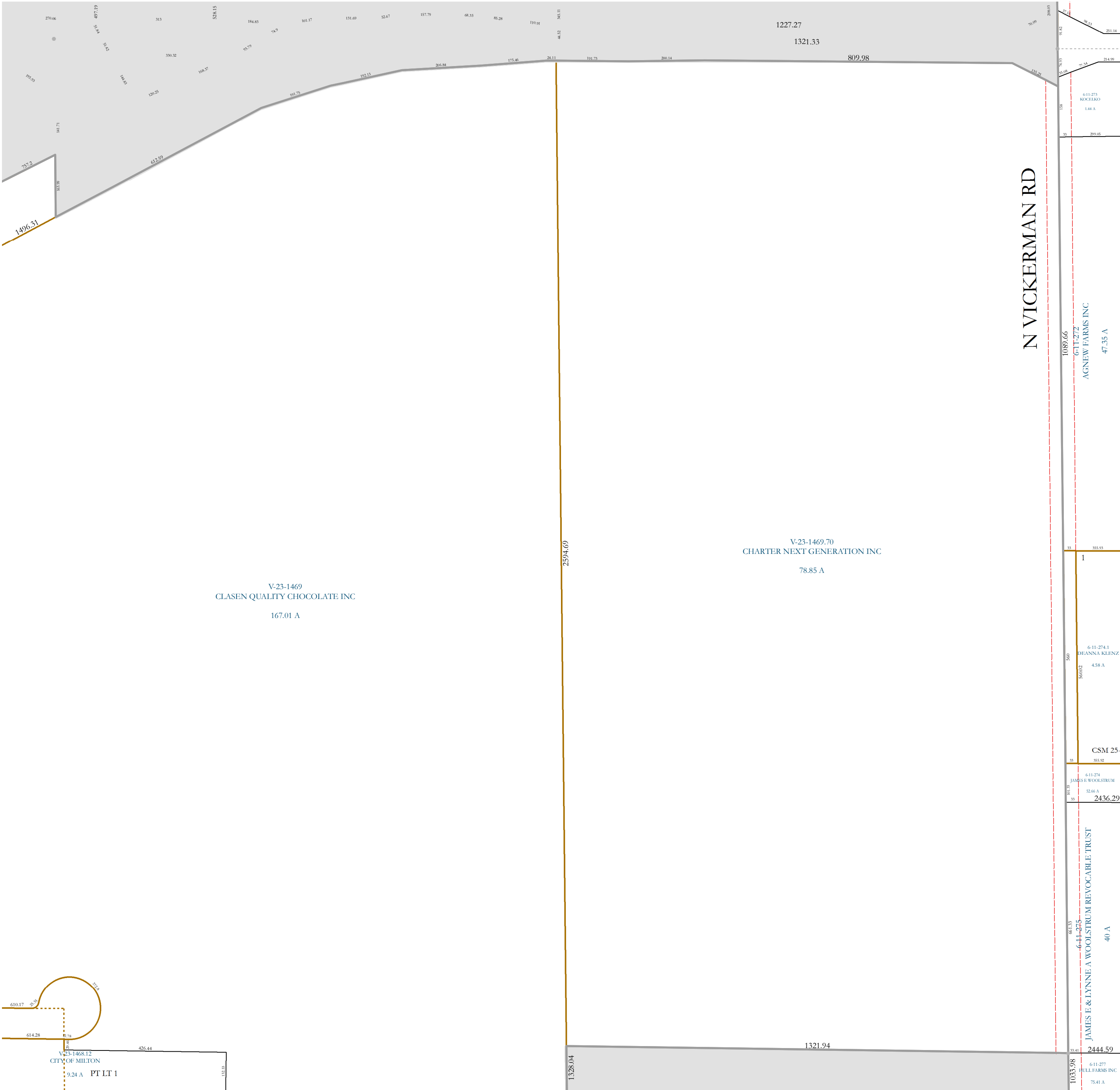
- |  |             |  |              |
|--|-------------|--|--------------|
|  | Gap         |  | dam          |
|  | Overlap     |  | easement     |
|  | CSM         |  | hydro        |
|  | CSMHYDRO    |  | lots         |
|  | CSMLOT      |  | parcels      |
|  | CSMLOTHYDRO |  | parcelshydro |
|  | MFL         |  | roadrw       |

See Pages

January 1, 2023

36 NE

Town of Milton



36 NW

V-23-1469  
CLASEN QUALITY CHOCOLATE INC  
167.01 A

V-23-1469.70  
CHARTER NEXT GENERATION INC  
78.85 A

N VICKERMAN RD

1089.66  
611-2727  
AGNEW FARMS INC  
47.35 A

6-11-2743  
DEANNA KLENZ  
4.58 A

CSM 25-  
305.00

4-11-274  
JAMES E WOOLSTROM  
32.05 A  
2436.29

6-11-277  
JAMES E & LYNNE A WOOLSTROM REVOCABLE TRUST  
40 A

6-11-277  
BELL FARMS INC  
75.41 A

36 SE

