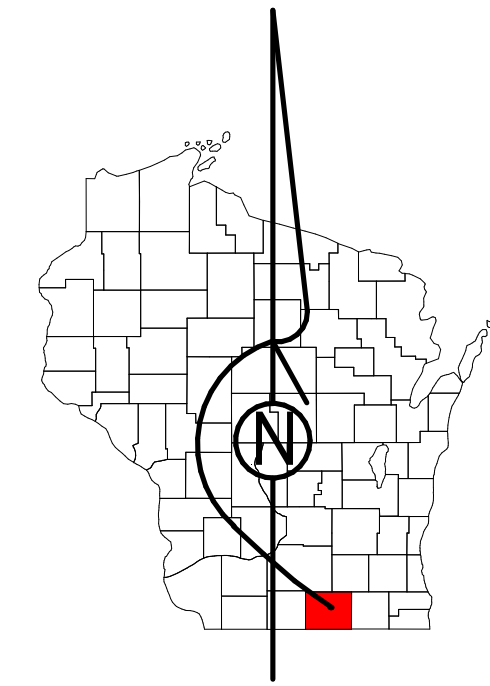


Property Division Map

City
of
Milton

T. 4 N. - R. 13 E.

Section 34 SWNE



STATE OF WISCONSIN
COUNTY OF ROCK

PREPARED BY

REAL PROPERTY DESCRIPTION
DEPARTMENT

USING

ROCK COUNTY
GEOGRAPHIC INFORMATION SYSTEM

DUPLICATION OF THIS MAP PROHIBITED
WITHOUT THE WRITTEN CONSENT OF THE
REAL PROPERTY DESCRIPTION DEPARTMENT.

THIS MAP WAS PREPARED PURSUANT
TO SECTION 70.09 WIS. STATS.
USING PUBLIC RECORDS. IT IS NOT INTENDED
TO BE A SUBSTITUTE FOR AN
ACTUAL FIELD SURVEY
AND IS ADVISORY ONLY.

DISTANCES SHOWN ON THIS
MAP WERE PRODUCED BY
THE GIS SYSTEM AND ARE
FOR REFERENCE ONLY.
SEE DOCUMENT OF RECORD
FOR ACTUAL DISTANCE.

0 12.5 25 50 75 100
Feet

- | | | | |
|--|-------------|--|--------------|
| | Gap | | dam |
| | Overlap | | easement |
| | CSM | | hydro |
| | CSMHYDRO | | lots |
| | CSMLOT | | parcels |
| | CSMLOT/HDRO | | parcelshydro |
| | MFL | | roadrw |

See Pages

January 1, 2023

34 SWNE

34 SWNE

34 SWNE

34 NWNE

51 MARY ST

E ST 1

CSM 11-655

CSM 2-247

CSM 21-116

CSM 3-248

CSM 17-305

CSM 7-305

CSM 17-305

CSM 17-305

CSM 25

CSM 17-305

CSM 17-305

CSM 17-305

CSM 17-305

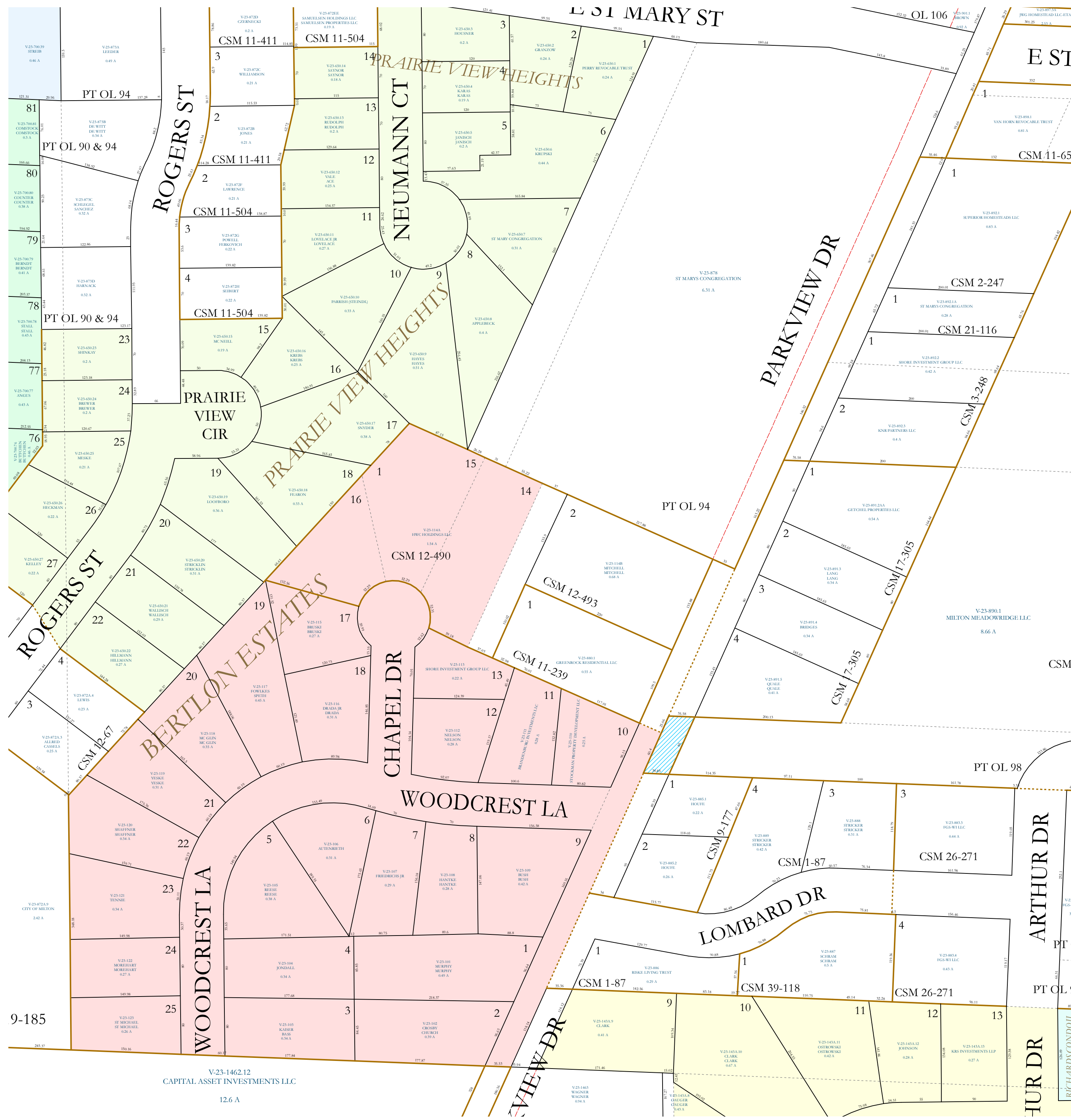
CSM 17-305

CSM 17-305

CSM 17-305

CSM 17-305

CSM 17-305



V-23-1462.12
CAPITAL ASSET INVESTMENTS LLC
12.6 A

34 NWSE