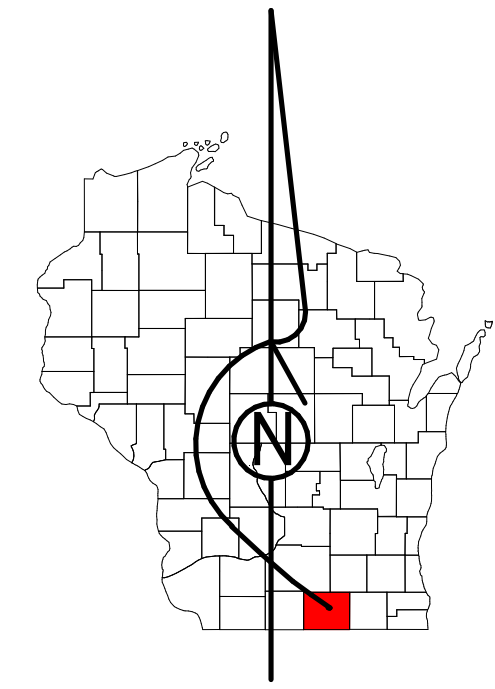


Property Division Map

City
of
Edgerton

T. 4 N. - R. 12 E.
Section 03 SE



STATE OF WISCONSIN
COUNTY OF ROCK

PREPARED BY

REAL PROPERTY DESCRIPTION
DEPARTMENT

USING

ROCK COUNTY
GEOGRAPHIC INFORMATION SYSTEM

DUPLICATION OF THIS MAP PROHIBITED
WITHOUT THE WRITTEN CONSENT OF THE
REAL PROPERTY DESCRIPTION DEPARTMENT.

THIS MAP WAS PREPARED PURSUANT
TO SECTION 7609 WIS. STATS.
USING PUBLIC RECORDS. IT IS NOT INTENDED
TO BE A SUBSTITUTE FOR AN
ACTUAL FIELD SURVEY
AND IS ADVISORY ONLY.

DISTANCES SHOWN ON THIS
MAP WERE PRODUCED BY
THE GIS SYSTEM AND ARE
FOR REFERENCE ONLY.
SEE DOCUMENT OF RECORD
FOR ACTUAL DISTANCE.

0 25 50 100 150 200
Feet

- Gap
- Overlap
- CSM
- CSMHYDRO
- CSMLOT
- CSMLOTTHYDRO
- MFL
- dam
- easement
- hydro
- lots
- parcels
- parcels/hydro
- roadw

See Pages

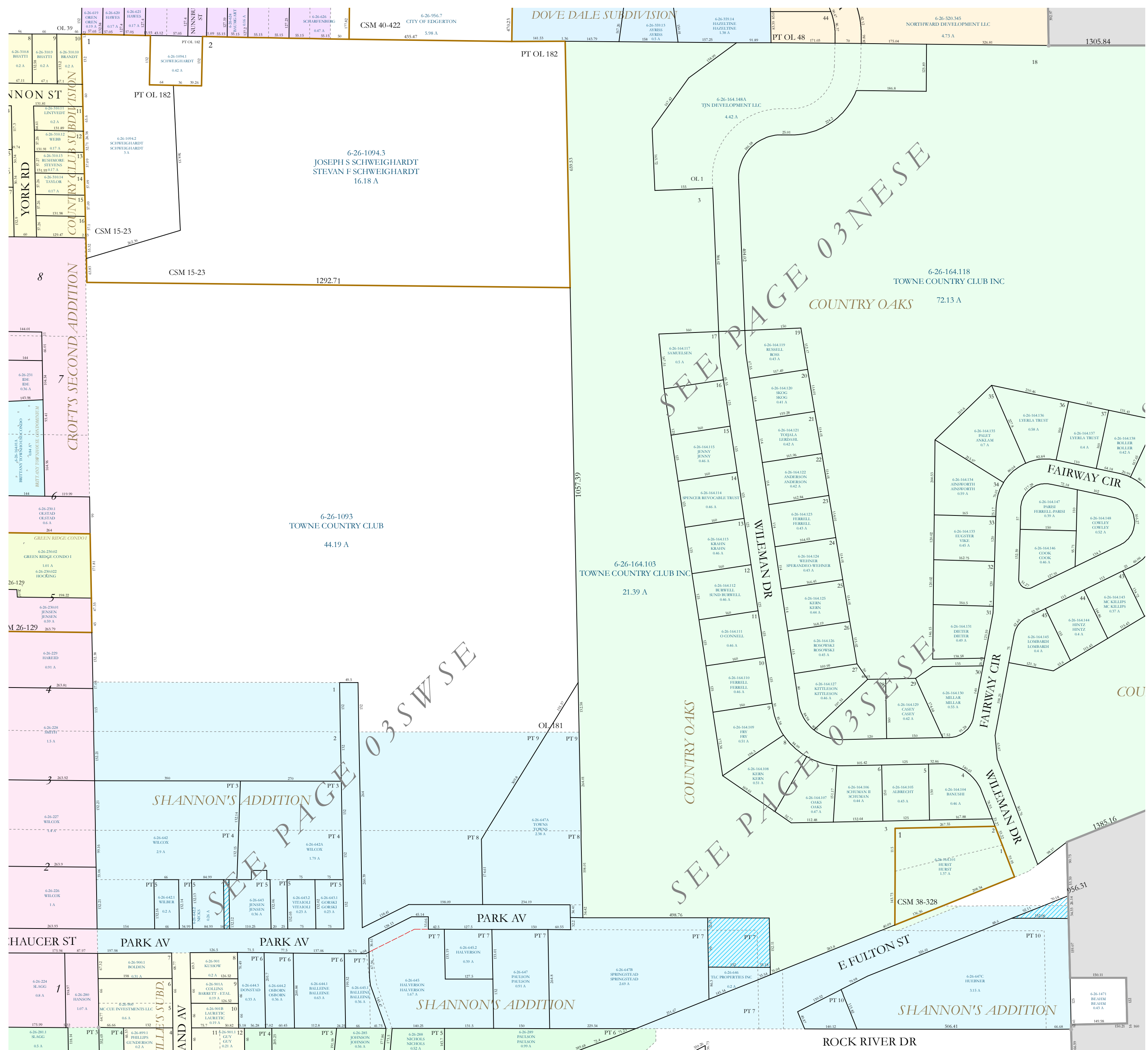
January 1, 2023

03 SE

03 NE

10 NE

SEE PAGE 03 NE SE
SEE PAGE 03 SW SE



03 SW

02 SW