

Of a Survey on Section.....T.....R.....E. of the 4 P. M. in.....Township

Rock County, Wisconsin, made.....AUGUST the.....2 ~~15~~ 2000

I hereby certify that the following is a correct record of said survey as made by me.
Donald Barnes

County Surveyor.

Mr. Charles H. Stoddard, Director
Bureau of Land Management
U. S. Dept. of the Interior
Washington, D. C.

Dear Sir:

The City of Oak Creek in September, 1961, conducted a land survey which consisted of the locating and relocating of all section, quarter-section, and center-of-section corners. These corners were all tied into a precise traverse and the distances, bearings, and angular measurements were calculated and thereupon shown on a section surveys map, a preliminary copy of which is enclosed for your reference. Also, the Public Land Survey corners and all other quarter-section corners were tied into the State Plane Coordinate System, Wisconsin South Zone.

Certain problems have arisen which we herewith request that you assist us in resolving.
Problem No. 1:

Our north city limits in the North line of Town 5 North, Range 22 East, 4th Principal Meridian. The original survey notes for the Township Survey indicate that closing corners were set when the last one-half mile of the interior section lines was run north to the Town Line.

In 1876, the Town of Oak Creek hired the County Surveyor to resurvey the Town and to set 6" x 6" x 36" limestone monuments. In 1932, the County Highway Department found such limestone monuments along the north line of the Town at all Section corners, Quarter Section corners, and closing corners. The County's survey was preliminary to engineering plans for concrete paving. In 1939 this concrete pavement was constructed and centered on the north line of the Township. The County Highway Department, at that time, placed cast iron plugs in the exact positions where the limestone monuments were found.

In our 1961 survey, prior to remonumentation with reinforced concrete monuments and coordination of the corners, we found that the closing corners are not on the Town line, but vary from a few hundredths of a foot to 1.20 feet north or south of the Town line.

The Manual of Surveying Instructions 1947, in Section 378 states "A closing corner not actually located on the line that was closed upon will determine the direction of the closing line, but not its legal terminus; the correct position is at the true point of intersection of the two lines." This, however, is in Chapter V entitled "Restoration of Lost Corners". Certain reputable surveyors practicing in our area question whether Section 378 is applicable in this case since the closing corners are not Lost Corners. We hold that the statement in Section 378 must apply to Existing or Obliterated Corners, since a Lost Corner cannot be located anywhere but on the line closed upon. May we have your opinion on this matter.

Problem No. 2:

The County Highway Department engineers, in doing their 1932 survey, determined that an angle point existed at the closing corners as well as at Section and Quarter Section corners. Many local surveyors in private practice also do this. (See Figure 1) In view of Section 378, we feel this is incorrect.

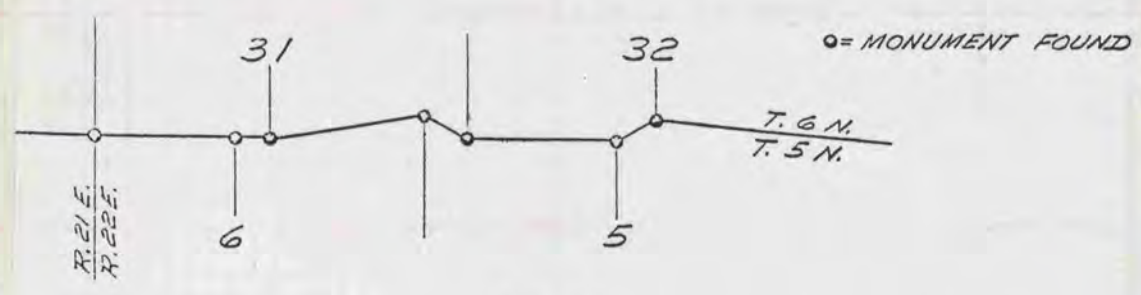


Fig. 1

We interpret Section 378 to mean the Town line should be run as indicated in Figure 2:

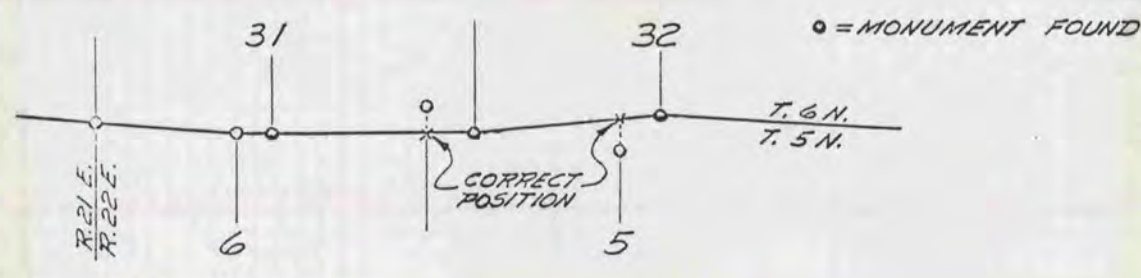


Fig. 2