

PLAT AND RECORD

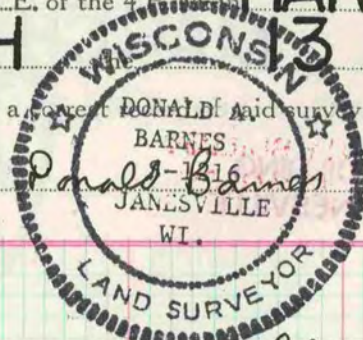
139

VOL. 6

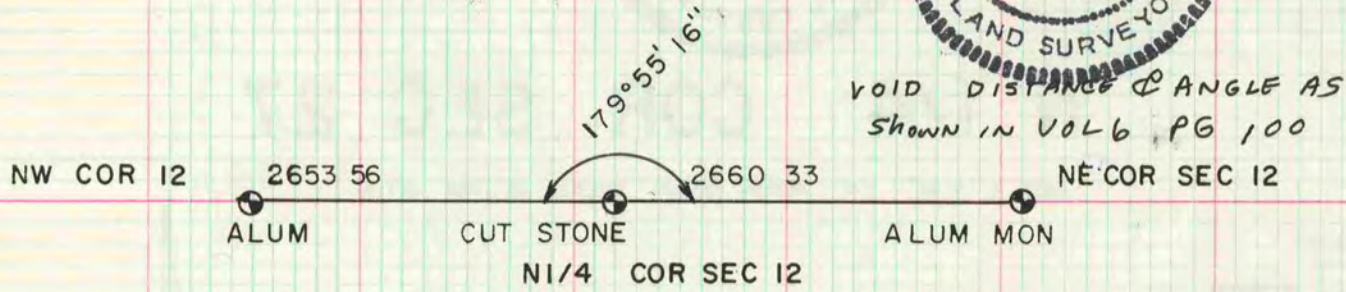
Of a Survey on Section **12** T. **3** R. **13** E. of the 4th P. M. in **HARMONY** Township
Rock County, Wisconsin, made **MARCH** 19 **81**

I hereby certify that the following is a correct DONALD Barnes and survey as made by me.

COUNTY BUILDING
CITY OF JANESVILLE

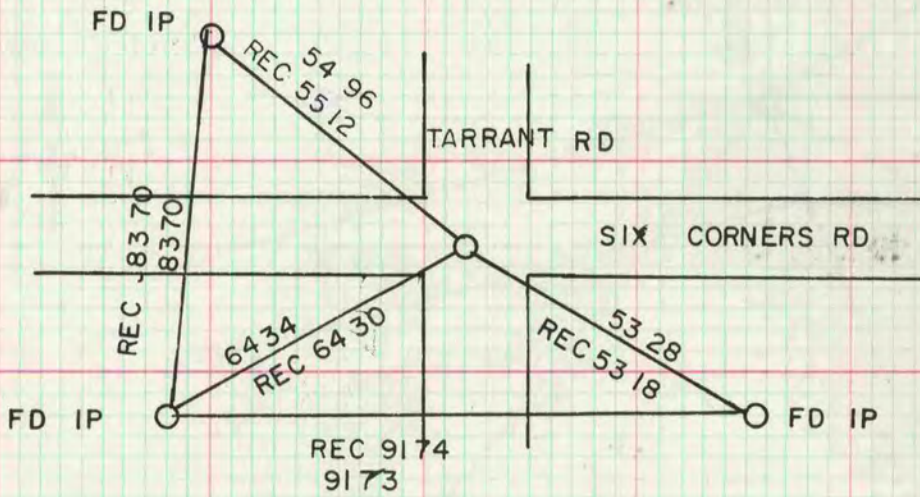


County Surveyor.



NE COR SEC 12

SET ALUM MON ON TOP OF CUT LIMESTONE



MICROFILMED

NW COR SEC 12

SET ALUM MON ON TOP OF CUT LIMESTONE

