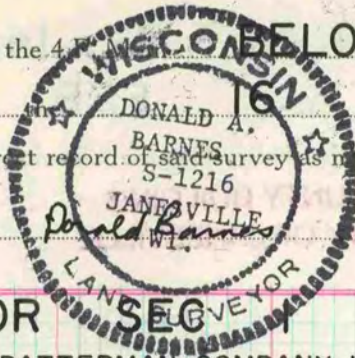


PLAT AND RECORD

Of a Survey on Section 1 T 1 R 12 E. of the 4th Township
Rock County, Wisconsin, made FEB. 16 1981

I hereby certify that the following is a correct record of said survey as made by me.

COUNTY BUILDING
CITY OF JANESVILLE



County Surveyor.

SW COR SEG

DEC 22 WAS WITH R.H. BATTERMAN COMPANY WHEN THE CORNER WAS REMOVED. A LIMESTONE 10" X 3 1/2" X 10" WAS FOUND. FEB. 16, 1981 SET 3/8" X 26" BOLT 1.5' DEEP FROM TIES. FIELD ENGINEER STATED A DECISION TO ALTER THE ROAD WAS PENDING.

MICROFILMED