

PLAT AND RECORD

129

VOL. 6

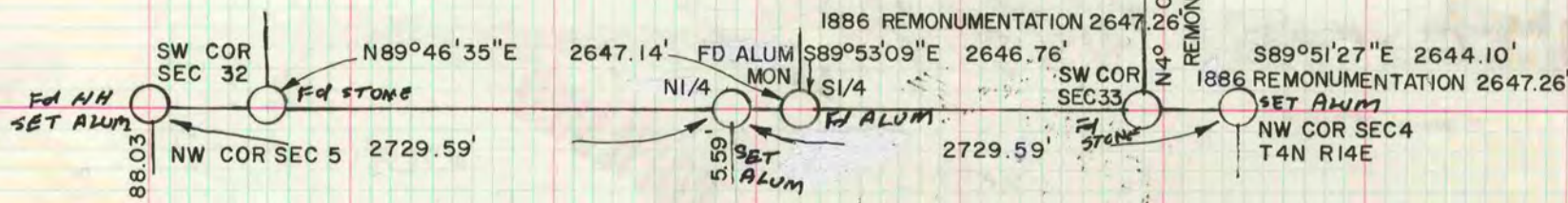
Of a Survey on Section **4, 5** T **4** R **14** E. of the 4 P. M. in **LIMA** Township
 Rock County, Wisconsin, made **FEB.** the **1981**

I hereby certify that the following is a correct record of said survey as made by me.

**COUNTY BUILDING
 CITY OF JANESVILLE**



W 1/4 COR SEC 32 T5N R14E



NI/4 COR SEC 5

SET ALUM MON ON LINE WITH THE SW COR SEC 32 T5N R14E & THE S1/4 COR SEC 32 T5N R14E EQUAL DISTANCE BETWEEN THE NE & NW CORNERS OF SEC 5

SW COR SEC 33 T5N R14E

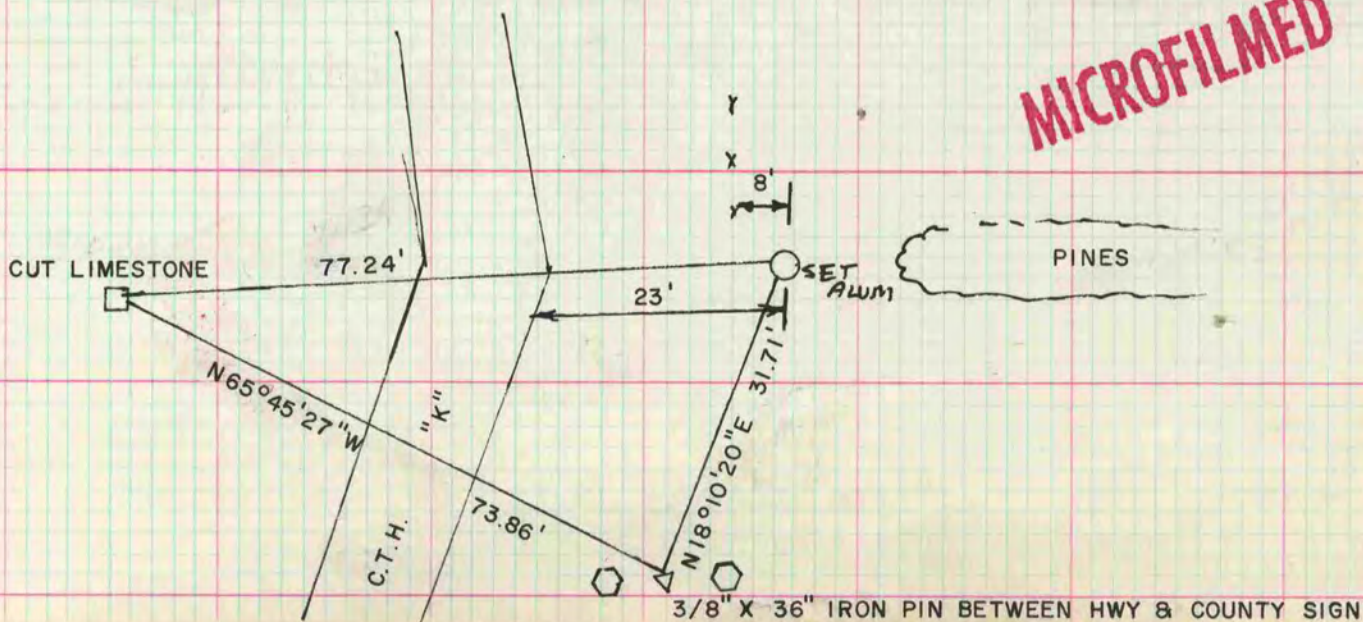
DUG & FOUND CUT LIMESTONE 0.3' DEEP PLACED R/R SPIKES ON EAST SIDE OF STONE

ASSUMED

NW COR SEC 4

LAND OWNER STATED A LONG TIME AGO THEY HAD THE AREA CLEARED WITH A BULLDOZER. DUG & FOUND NOTHING. SET ALUM MON ON LINE WITH THE SW COR SEC 33 T5N R14E AND THE NI/4 COR SEC 4 AT RECORD DISTANCE FROM THE SW CORNER.

MICROFILMED



3/8" X 36" IRON PIN BETWEEN HWY & COUNTY SIGN