

PLAT AND RECORD

119
VOL. 6

Of a Survey on Section 7,6 T 3 R 15 E. of the 4 P. M. in RICHMOND Township
Rock County, Wisconsin, made JAN. 12th 1981

I hereby certify that the following is a correct record of said survey as made by me.

COUNTY BUILDING
CITY OF JANESVILLE

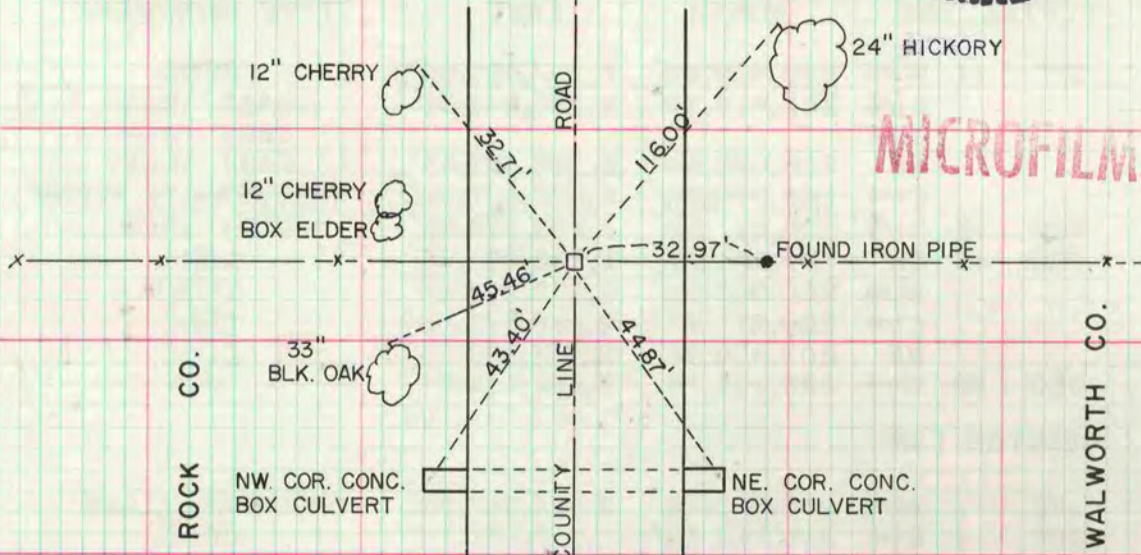


County Surveyor.

THE S. P. BARNARD COMPANY, ST. LOUIS

WI/4 COR SEC 7

DATA SUPPLIED BY WALWORTH COUNTY SURVEYORS OFFICE



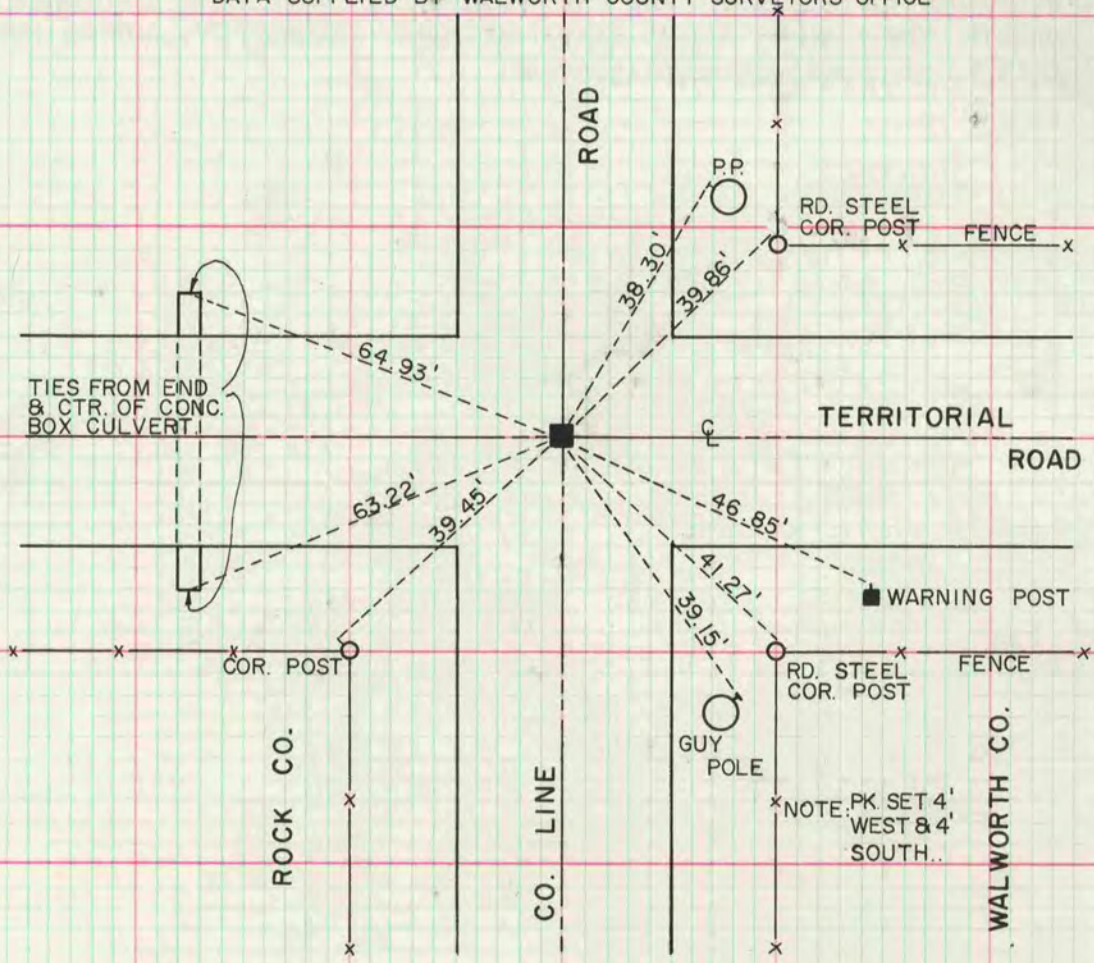
MICROFILMED

LOCATED BY T. JENSEN, S-1084, OCT. 6, 1975.

FOUND CONCRETE COUNTY MONUMENT

SW COR SEC 6

DATA SUPPLIED BY WALWORTH COUNTY SURVEYORS OFFICE



LOCATED BY E. BLOMQUIST, S-1279, 1975
TIED IN BY JENSEN & JOHNSON, OCT., 1975