

PLAT AND RECORD

105
VOL. 6

Of a Survey on Section 19, 31 T 1 R 15 E. of the 4 P. M. in SHARON Township
Rock County, Wisconsin, made DEC. the 1980

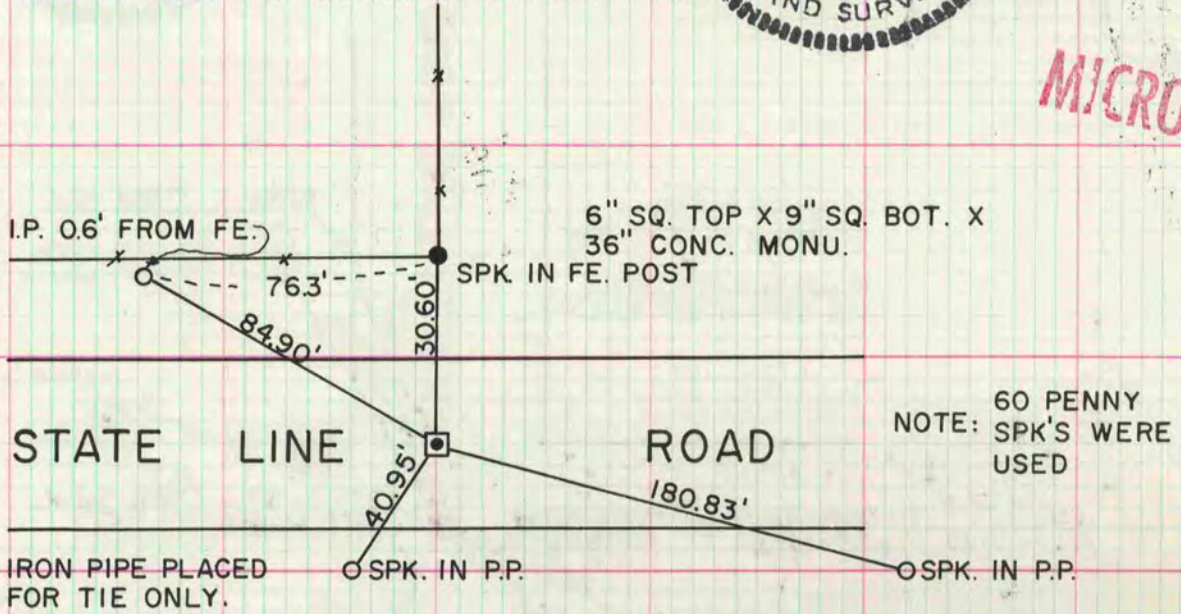
I hereby certify that the following is a correct record of said survey as made by me.

COUNTY BUILDING
CITY OF JANESVILLE



DONALD A. BARNES
5-1216
County Surveyor.

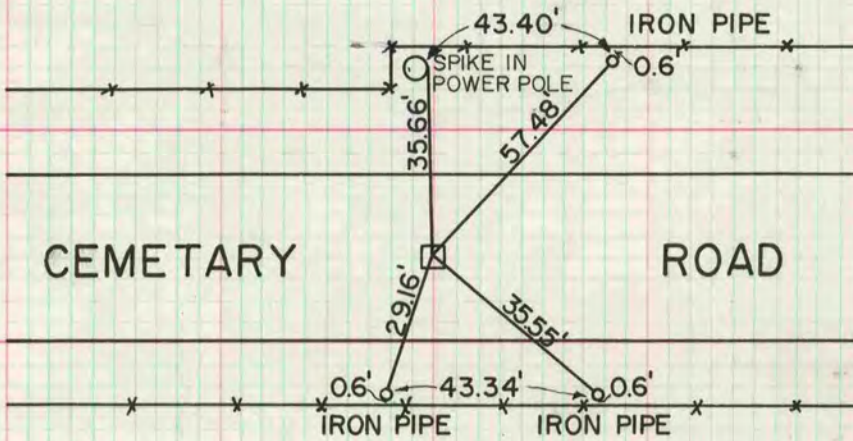
SW COR SEC 31
DATA SUPPLIED BY WALWORTH COUNTY SURVEYORS OFFICE



I HEREBY CERTIFY THAT I FOUND A WELL DECAYED WOOD STAKE AT 8.0' BELOW ROAD. MARK ENDED AT 9.7' IN LIGHT GRAY BROWN CLAY. HIT NATURAL GROUND AT 6.5' SET A CO. MONU.
LOCATED BY H. KOLB, MAY, 1974

SW COR SEC 19
DATA SUPPLIED BY WALWORTH COUNTY SURVEYORS OFFICE

FOUND MARK 2.3' BELOW SURFACE IN LT. BROWN CLAY MARK ENDED AT 4.0' 6" SQ. TOP X 9" SQ. BOTTOM X 36" CONC. MONUMENT



NOTE: IRON PIPE PLACED FOR TIES ONLY
NOTE: 60 PENNY SPIKES WERE USED
LOCATED BY H. KOLB MAY 74

MICROFILME