

Of a Survey on Section 9 T. 4 R. 12 E. of the 4 P. M. in FULTON Township

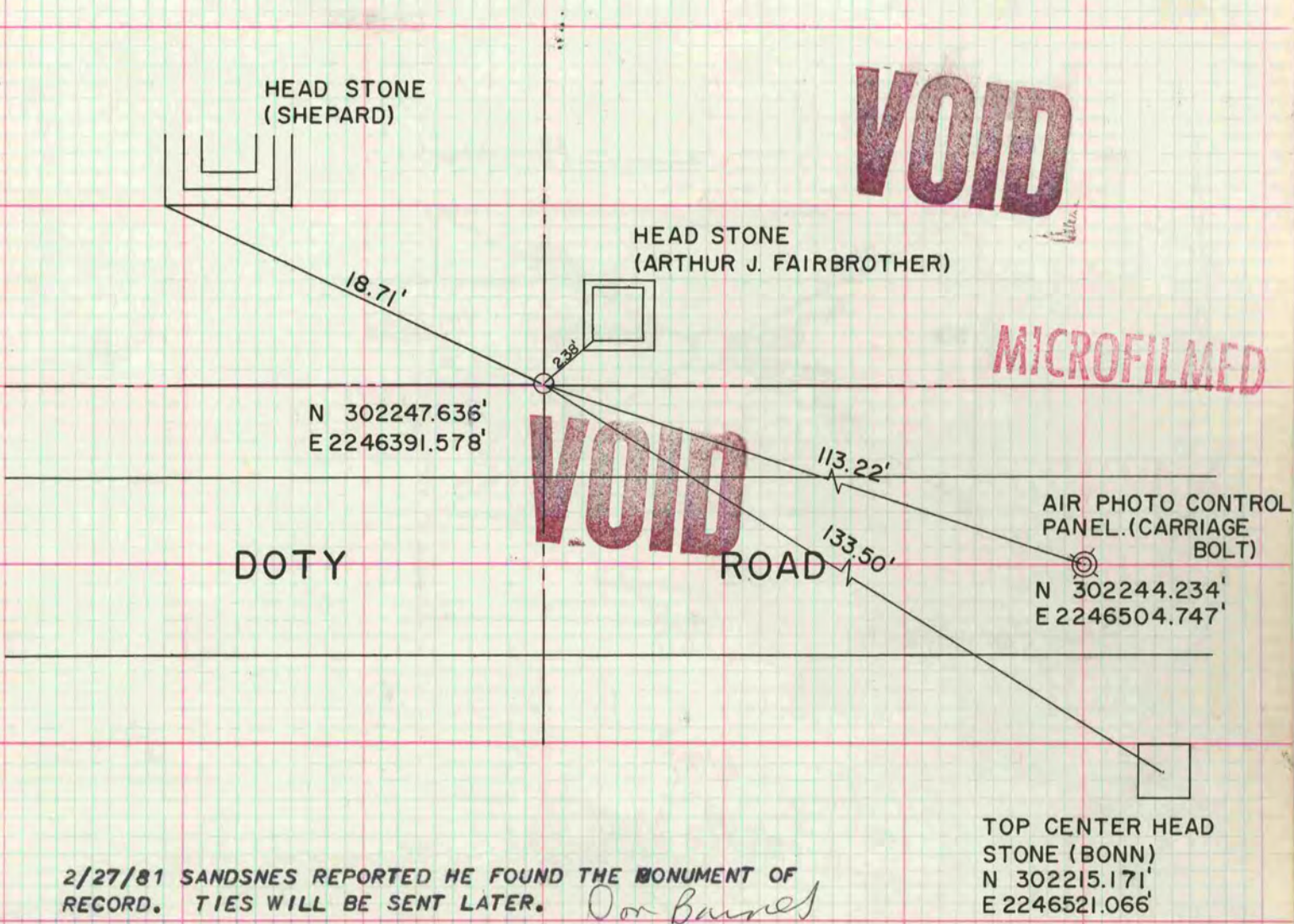
Rock County, Wisconsin, made OCT. the 30th 1980

I hereby certify that the following is a correct record of said survey as made by me.

County Surveyor.

CENTER 1/4 COR SEC 9

INFORMATION SUPPLIED BY ARDEN SANDSNES. SET 1" X 24" IRON PIPE AT CENTER SECTION BASED ON ITS LOCATION AS RECORDED ON THE FASSETT CEMETERY PLATS.



2/27/81 SANDSNES REPORTED HE FOUND THE MONUMENT OF RECORD. TIES WILL BE SENT LATER. *Or Barnes*