

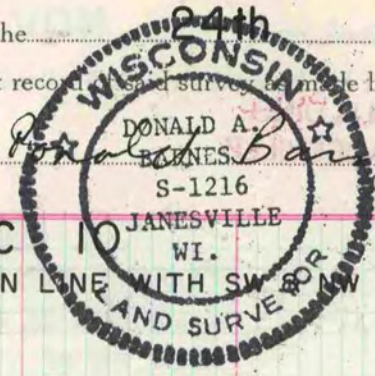
PLAT AND RECORD

95
VOL. 6

Of a Survey on Section 10, 15, 24 T 1 R 14 E. of the 4 P. M. in CLINTON Township
Rock County, Wisconsin, made NOV. 24th 1980

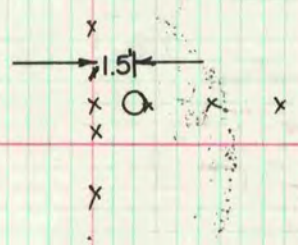
I hereby certify that the following is a correct record of survey made by me.

COUNTY BUILDING
CITY OF JANESVILLE



W 1/4 COR SEC 10

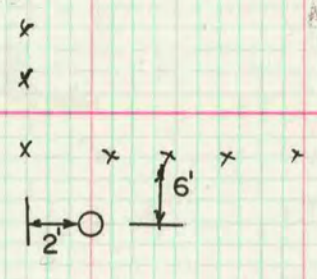
DUG & FOUND NOTHING, SET ALUM MON ON LINE WITH SW CORNERS OF SEC 10.



MICROFILMED

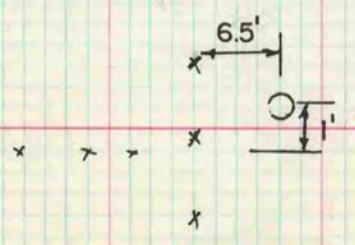
N 1/4 COR SEC 15

DUG & FOUND NOTHING, SET ALUM MON ON LINE WITH NE & NW CORNERS OF SEC 15 AT SINGLE PROPORTIONATE DISTANCE. AREA WAS DISTURBED BY A BULL DOZER.



E 1/4 COR SEC 24

DUG & FOUND NOTHING, SET ALUM MON 12" DEEP ON LINE WITH THE NE & SE CORNERS OF SECTION 24. THIS WAS IN HARMONY WITH THE LANDOWNER'S TESTIMONY WHO RESIDES IN THE SE 1/4 OF THE SE 1/4 OF SEC 24



ABOUT 500' SOUTH THE FENCE BENDS TOWARDS THE WEST