

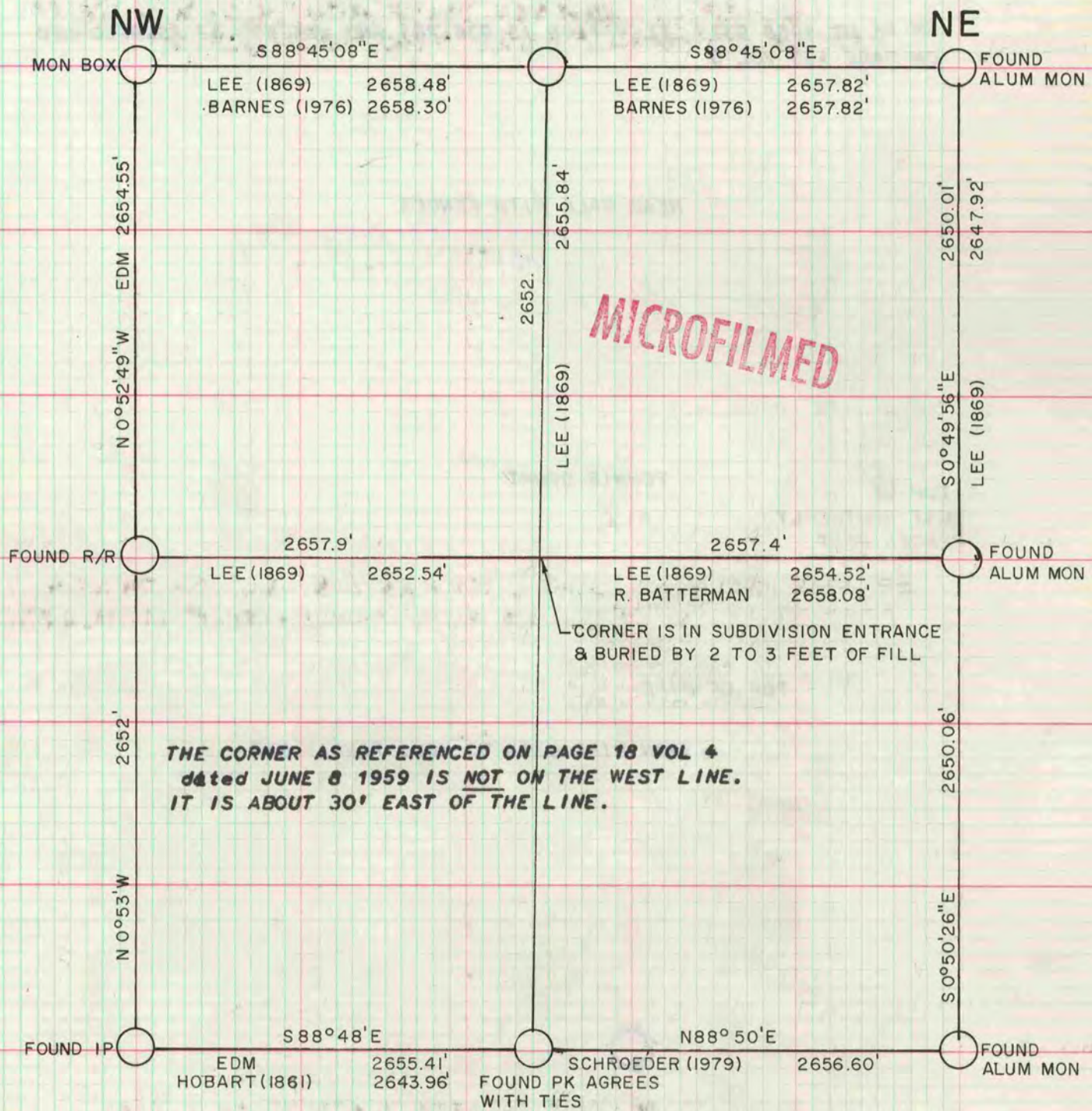
VOL. 6 PLAT AND RECORD

Of a Survey on Section **25** T **1** R **13** E. of the 4 P. M. in **TURTLE** Township
Rock County, Wisconsin, made **OCT** the **14th** 19**80**

I hereby certify that the following is a correct record of said survey as made by me.

**COUNTY BUILDING
CITY OF JANESVILLE**

Donald Barnes



THE COORDINATES USED TO COMPUTE THE DISTANCES IN THE SOUTH HALF OF THE SECTION WERE COMPUTED FROM THE INFORMATION ON PAGE 533 VOL 5. THE CENTER OF SECTION WAS COMPUTED.

W1/4 COR SEC 25

FOUND R/R SPIKE, DUG AND FOUND NOTHING AS SHOWN. REPLACED SPIKE WITH ALUM MON. THE SPIKE WAS IN HARMONY WITH OCCUPATION AND LEE'S SURVEY.

