

# VOL. 6 PLAT AND RECORD

Of a Survey on Section 17 T 3 R 13 E. of the 4 P. HARMONY Township  
Rock County, Wisconsin, made SEPT. the 4 1980

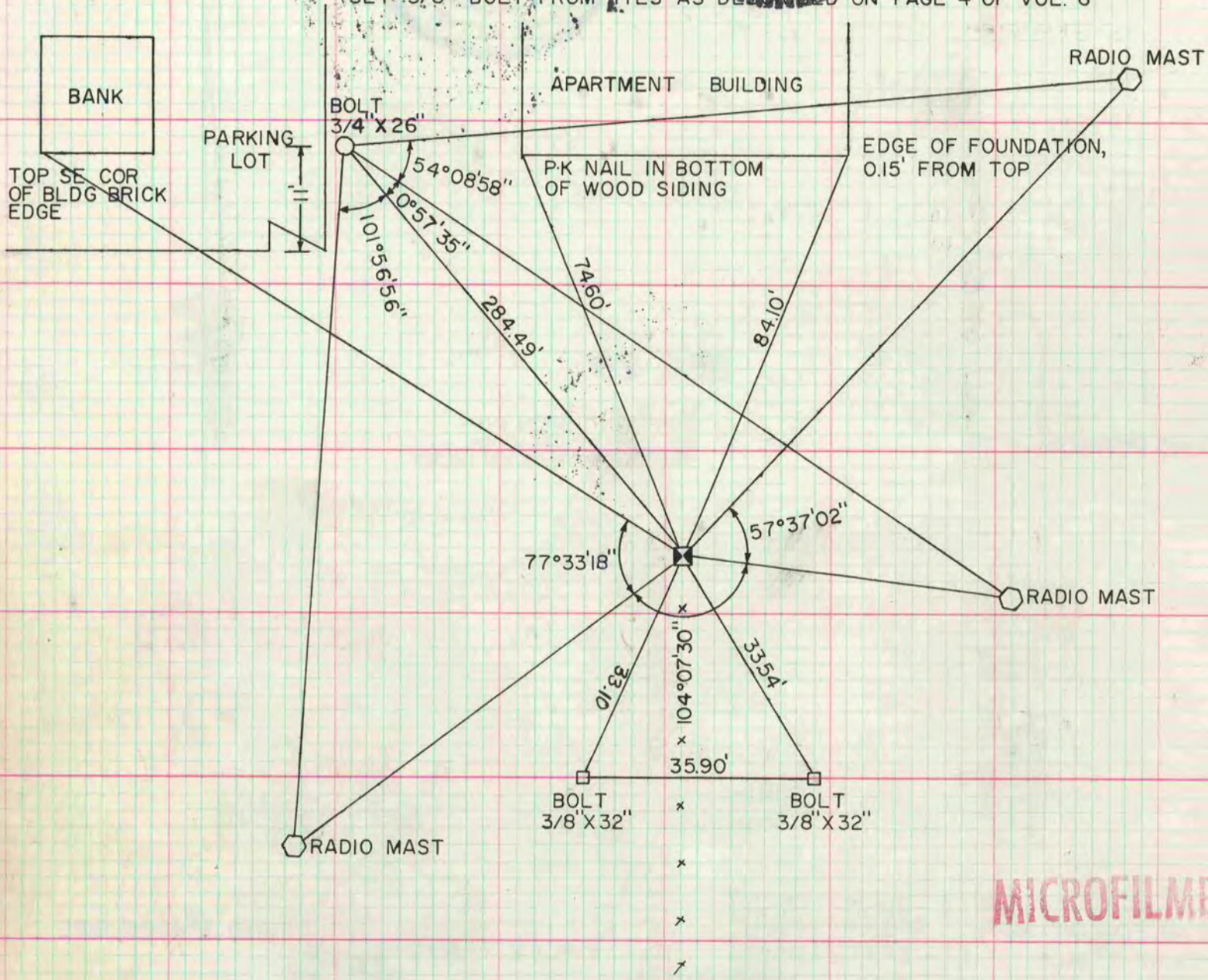
COUNTY BUILDING  
CITY OF JANESVILLE



I hereby certify that the following is a correct record of a survey as made by me.

### SW COR SEC 17

SET 3/8" BOLT FROM TIES AS DESCRIBED ON PAGE 4 OF VOL. 6



MICROFILMED

