

# VOL. 6 PLAT AND RECORD

31-32 4 14  
5-6 T 3 R 14 E. of the 4 P.

Of a Survey on Section 5-6 Township LIMA WISCONSIN

Rock County, Wisconsin, made AUGUST 18 1980

I hereby certify that the following is a correct record of said survey as made by me.

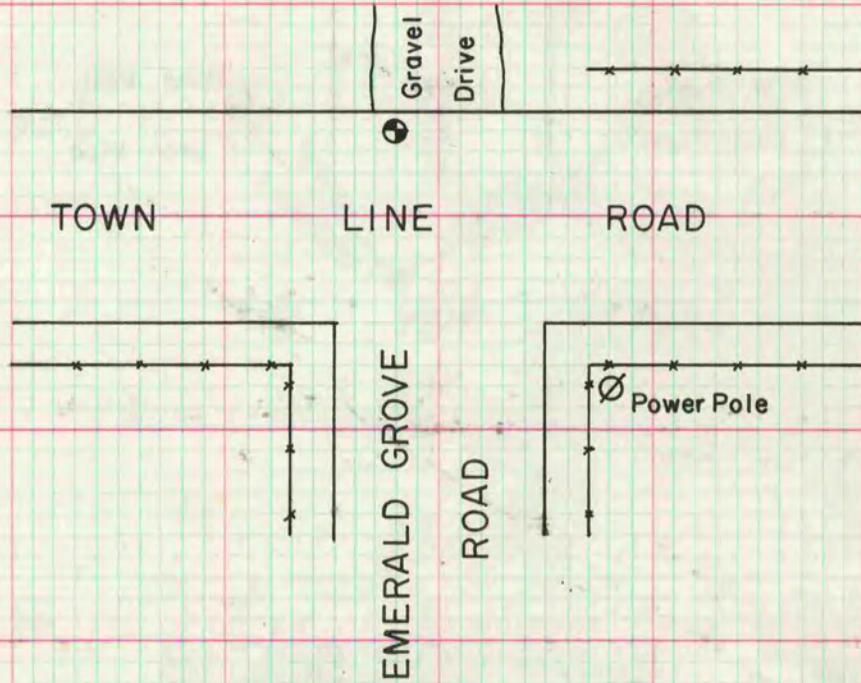
COUNTY BUILDING  
CITY OF JANESVILLE



County Surveyor.

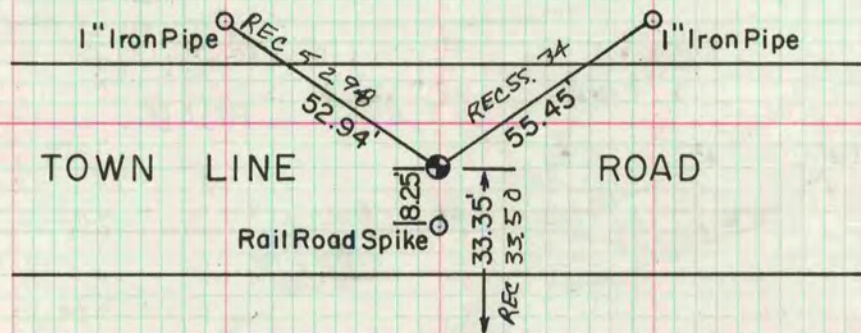
## NW. COR. SEC. 5

FOUND 1" IRON PIPE SET ALUMINUM MONUMENT



## N. 1/4 COR. SEC. 5

FOUND RAILROAD SPIKE AND SET ALUMINUM MONUMENT



Concrete Fence Post, Distance Measured To Northeast Edge, 1' Up From Ground

MICROFILMED