

556

VOL. 6 PLAT AND RECORD

52

Of a Survey on Section **7**, **12, 13** T **3** R **10** E. of the **11** **CENTER** **MAGNOLIA** Township

Rock County, Wisconsin, made **JULY** 19**80**

I hereby certify that the following is a correct record of said survey as made by me.

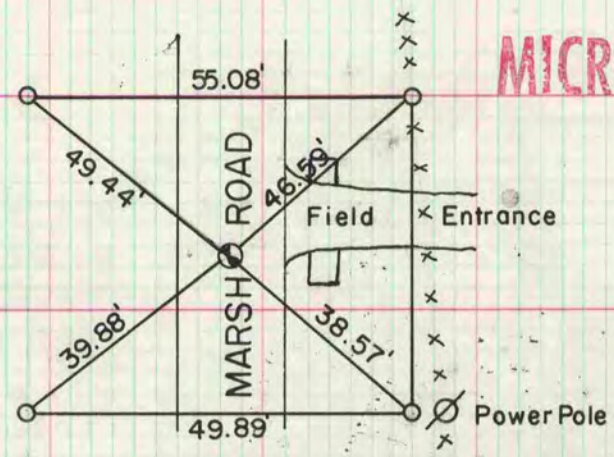
COUNTY BUILDING
CITY OF JANESVILLE



County Surveyor.

W1/4 COR. SEC 13.

FORMER COUNTY SURVEYOR DUG AND FOUND NOTHING. SET ALUM MON ON LINE WITH THE NW AND SW CORNERS OF SECTION 13 AT SINGLE PROPORTIONATE DISTANCE.
3/8" x 32" Iron Bolt



MICROFILMED

NE COR SEC 12

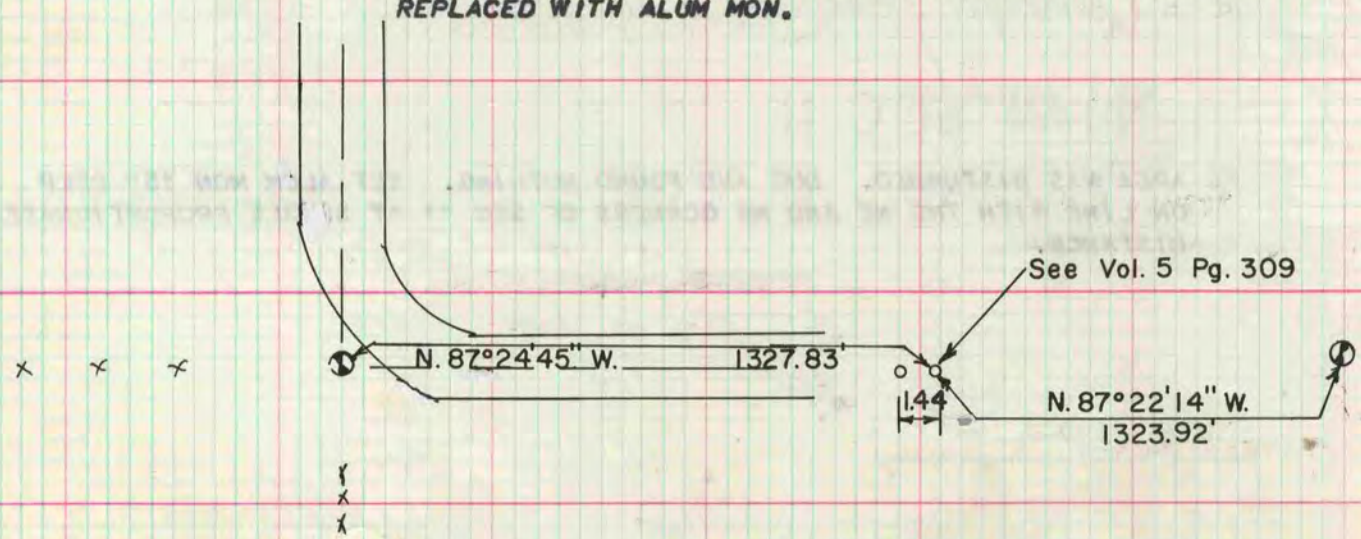
DUG AND FOUND STONE OF RECORD. REPLACED WITH ALUM MON.

E 1/4 COR SEC 12

DUG AND FOUND NOTHING. SET ALUM MON ON LINE WITH THE NE SEC 12 & THE SW COR SEC 7 AT SINGLE PROPORTIONATE DISTANCE

SW 1/4 COR SEC 12

UNDER 3" TREE DUG AND FOUND LIMESTONE 5"X5"X10" D 3 LIMESTONES & 1 HH REPLACED WITH ALUM MON.



W1/4 COR SEC 7 CENTER TWP

DUG AND FOUND NOTHING. SET ALUM MON ON LINE WITH THE NE COR SEC 12 AND THE SW COR SEC 7

