

PLAT AND RECORD

575

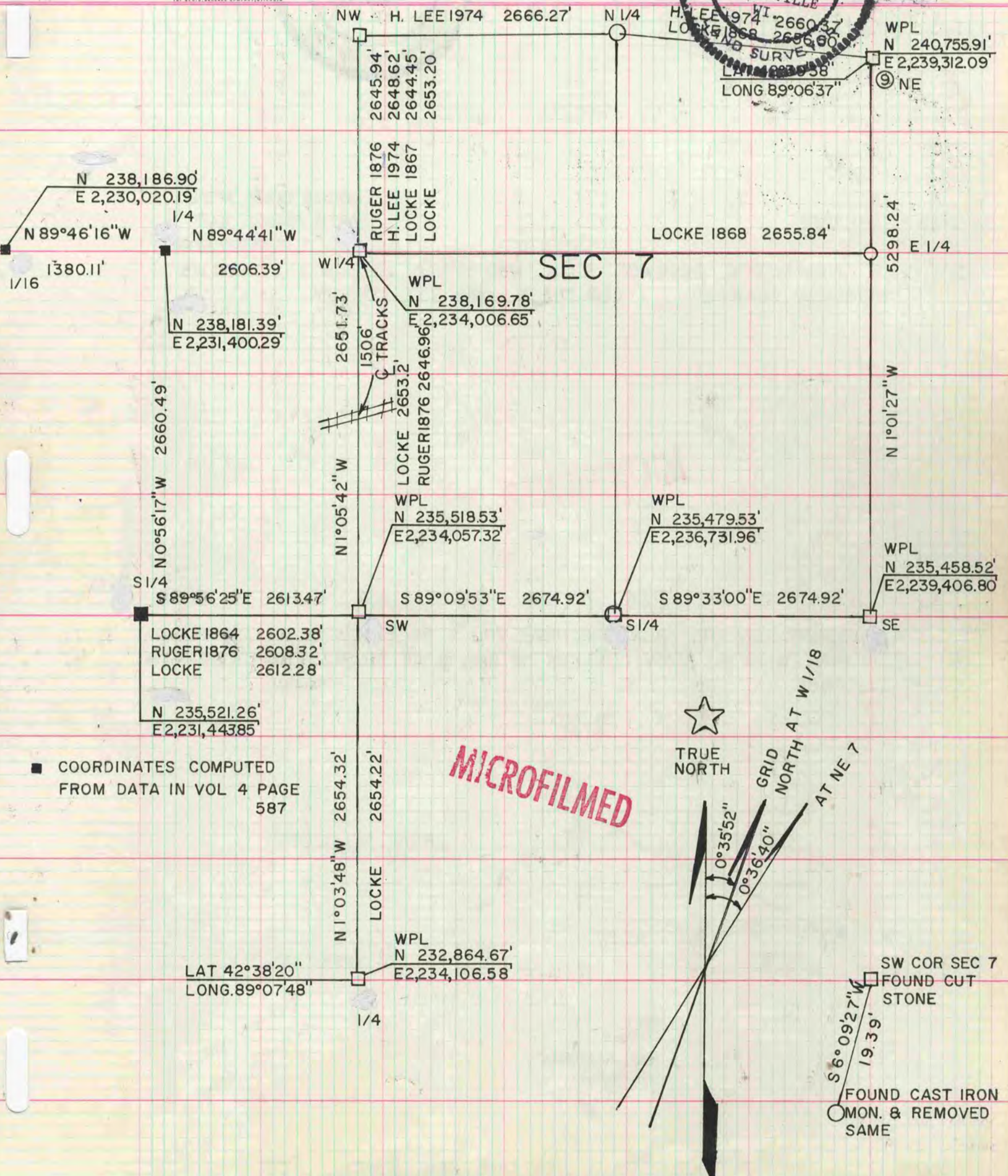
VOL. 6 29

Of a Survey on Section 18, 7 T 2 R 12 E. of the 4 P. M. in ROCK Township

Rock County, Wisconsin, made MAY 13 1980

COUNTY BUILDING
CITY OF JANESVILLE

I hereby certify that the following is a correct record of said survey as made
DONALD A. BARNES
1216
JANESVILLE
County Surveyor.



■ COORDINATES COMPUTED FROM DATA IN VOL 4 PAGE 587

MICROFILMED

TRUE NORTH

GRID NORTH AT W 1/18
NORTH AT W 1/18 AT NE 7

FOUND CAST IRON MON. & REMOVED SAME
FOUND CUT STONE