

Of a Survey on Section 30 T 2 R 12 E. of the 4 P. M. in Rock Township

Rock County, Wisconsin, made September the 28th 19 72

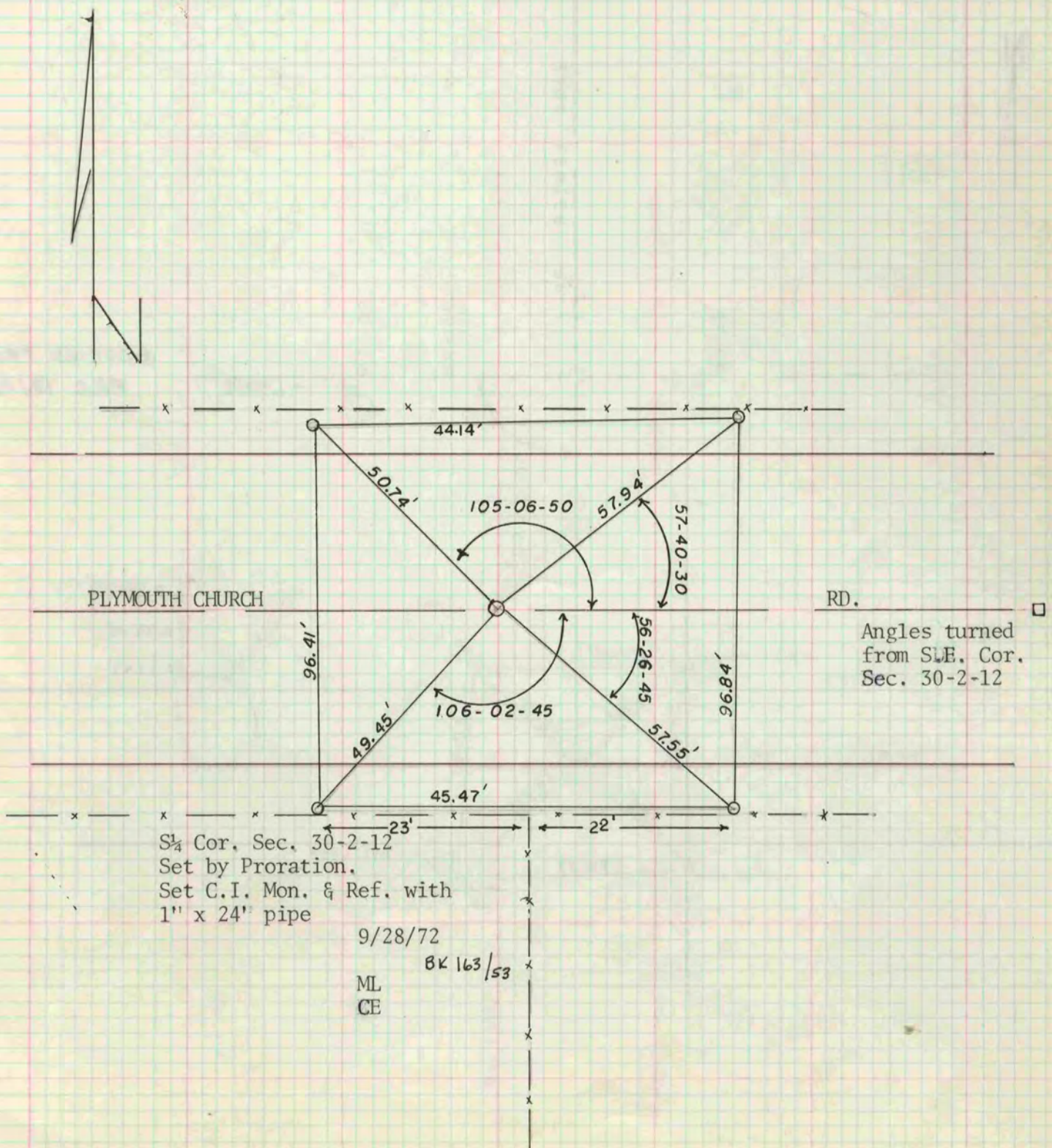
I hereby certify that the following is a correct record of said survey as made by me.

MICROFILMED

August J. De

County Surveyor.

THE GEO. B. BARNARD COMPANY, ST. LOUIS



Angles turned from S.W.E. Cor. Sec. 30-2-12

S 1/4 Cor. Sec. 30-2-12
Set by Proration.
Set C.I. Mon. & Ref. with
1" x 24" pipe

9/28/72

BK 163/53

ML
CE