

# PLAT AND RECORD

199  
V-4

COUNTY BUILDING DIVISION  
CITY OF JANESVILLE

Of a Survey on Section 18 T 2 R 12 E. of the 4 P. M. in ROCK Township

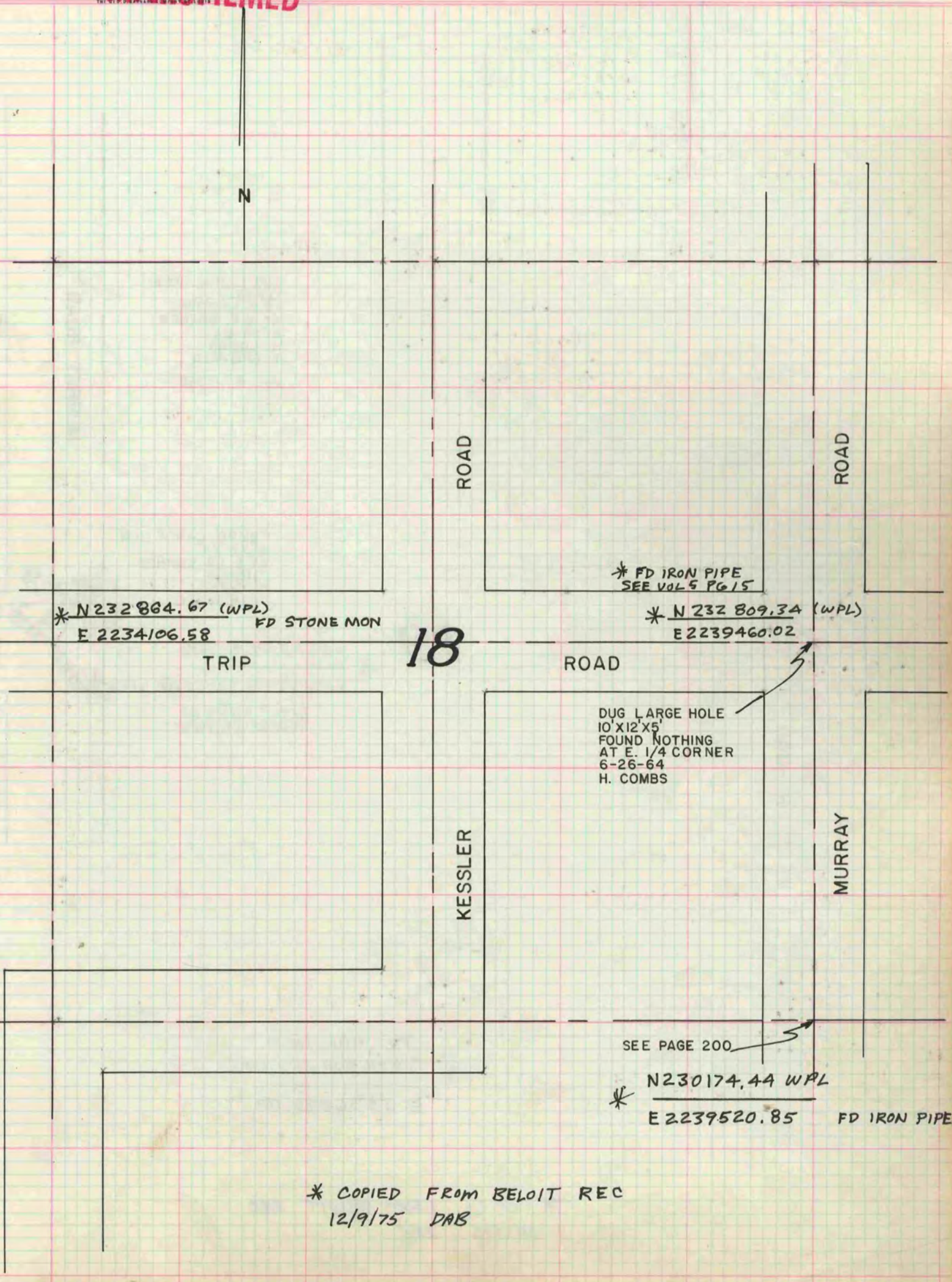
Rock County, Wisconsin, made JUNE the 26 1964

I hereby certify that the following is a correct record of said survey as made by me.

*Robert A. ...*

County Surveyor.

**MICROFILMED**



\* N 232 864.67 (WPL)  
E 2234106.58 FD STONE MON

\* FD IRON PIPE  
SEE VOL 5 PG 15

\* N 232 809.34 (WPL)  
E 2239460.02

TRIP

18

ROAD

DUG LARGE HOLE  
10' X 12' X 5'  
FOUND NOTHING  
AT E. 1/4 CORNER  
6-26-64  
H. COMBS

KESSLER

MURRAY

SEE PAGE 200

\* N 230174.44 WPL  
E 2239520.85 FD IRON PIPE

\* COPIED FROM BELOIT REC  
12/9/75 DAB