

PLAT AND RECORD

187
JV-4

COUNTY BUILDING
CITY OF JANESVILLE

Of a Survey on Section 16 T 3 R 10 E. of the 4 P. M. in MAGNOLIA Township

Rock County, Wisconsin, made SEPTEMBER the 23 1964

I hereby certify that the following is a correct record of said survey as made by me.

MICROFILMED

R. W. Bettegar

County Surveyor.

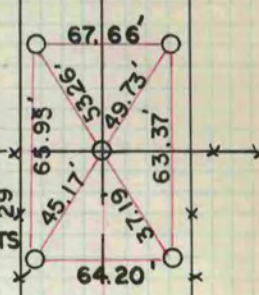
THE GEO. P. BARBARO COMPANY, ST. LOUIS



DUG LARGE HOLE
FOUND NOTHING AT
N.E. CORNER.
9-23-64
H. LEE
T. KERWIN

ROAD

FOUND STAKE 0 BY
5 SANDSTONES AT
E. 1/4 COR. 9-23-64
H. LEE, T. KERWIN
SET 1" PIPES AT
CORNER AND
REFERENCED POINTS
11-4-64
H. COMBS
G. HANSON



16

MARTIN ROAD

KNUTSON

DUG LARGE HOLE
15' x 5' x 4'
FOUND NOTHING.
9-23-64
H. LEE, T. KERWIN

C.T.H. "A"