

PLAT AND RECORD

COUNTY BUILDING CITY OF JANESVILLE

Jones

Of a Survey on Section 26 T 4 R 10 E. of the 4 P. M. in UNION Township

Rock County, Wisconsin, made JULY the 13 1962

I hereby certify that the following is a correct record of said survey as made by me.

MICROFILMED

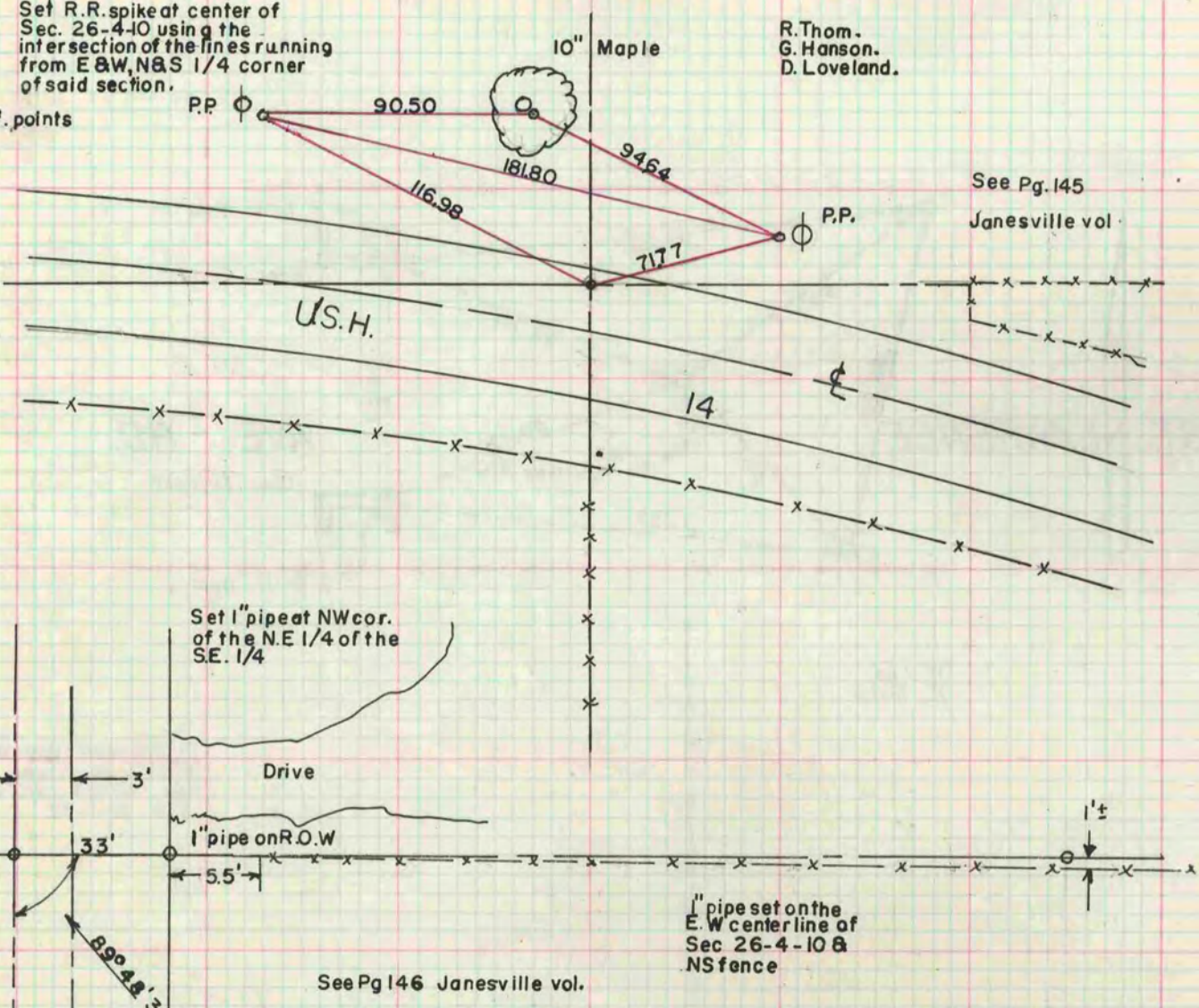
R. W. Batteman Jr.

County Surveyor.

Set R.R. spike at center of Sec. 26-4-10 using the intersection of the lines running from E & W, N & S 1/4 corner of said section.

NOTE - All ref. points are 1" pipe

R. Thom.
G. Hanson.
D. Loveland.



See Pg. 145
Janesville vol.

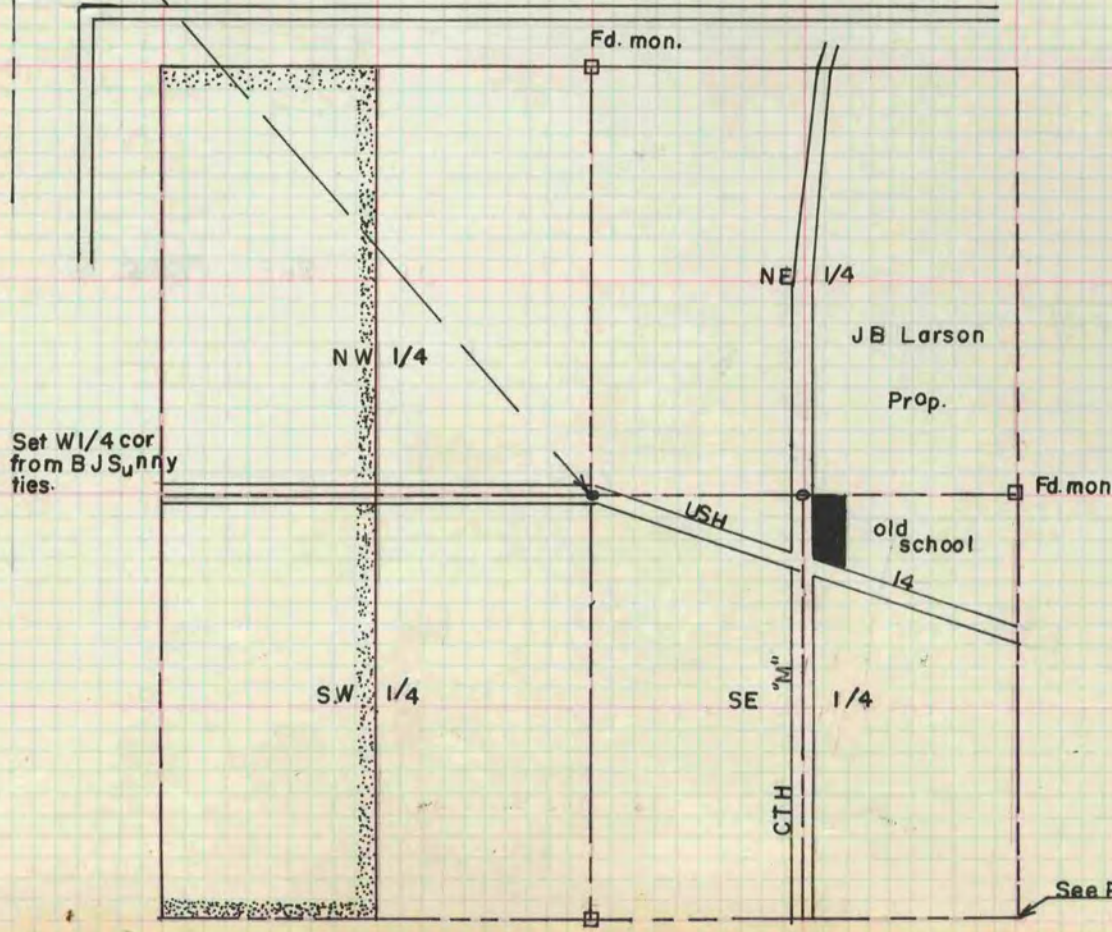
Set 1" pipe at NW cor. of the N.E. 1/4 of the S.E. 1/4

Drive

1" pipe on R.O.W.

1" pipe set on the E. W center line of Sec 26-4-10 & NS fence

See Pg 146 Janesville vol.



See Pg 297