

PLAT AND RECORD

39
V-4

COUNTY BUILDING
CITY OF JANESVILLE

Of a Survey on Section 29 T 3 R 13 E. of the 4 P. M. in Harmony Township

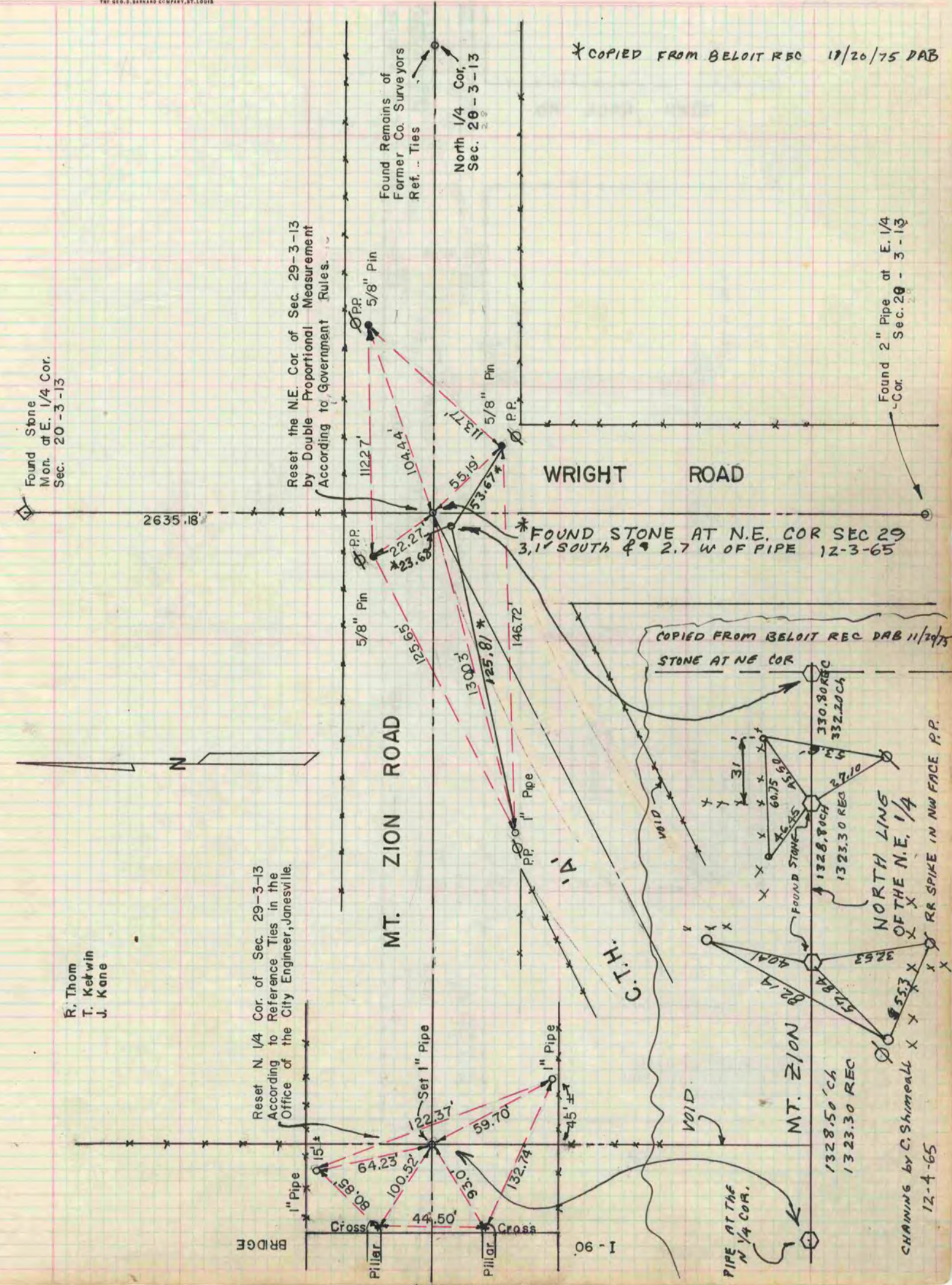
Rock County, Wisconsin, made May the 8 1960

I hereby certify that the following is a correct record of said survey as made by me.

MICROFILMED

R. B. Batten

County Surveyor.



* COPIED FROM BELOIT REC 10/20/75 DAB

COPIED FROM BELOIT REC DAB 11/20/75
STONE AT NE COR

CHANNING by C. Shimeall
12-4-65

R. Thom
T. Ketwin
J. Kane

Reset N. 1/4 Cor. of Sec. 29-3-13
According to Reference Ties in the
Office of the City Engineer, Janesville.

Reset the N.E. Cor of Sec. 29-3-13
by Double Proportional Measurement
According to Government Rules.

Found Remains of
Former Co. Surveyors
Ref. Ties

North 1/4 Cor.
Sec. 29-3-13

Found 2" Pipe at E. 1/4
Cor. Sec. 29-3-13

* FOUND STONE AT N.E. COR SEC 29
3.1' SOUTH & 2.7' W OF PIPE 12-3-65

FOUND STONE
1328.80 CH
1323.30 REC
NORTH LING
OF THE N.E. 1/4
RR SPIKE IN NW FACE P.P.

PIPE AT THE
N 1/4 COR.

MT. ZION

MT. ZION ROAD

WRIGHT ROAD

C.T.H.

VOID

VOID

BRIDGE

06 - I