

PLAT AND RECORD

COUNTY BUILDING
CITY OF JANESVILLE

5.1

V-3

Of a Survey on Section 24 T 3 R 12 E. of the 4 P. M. in Janesville Township

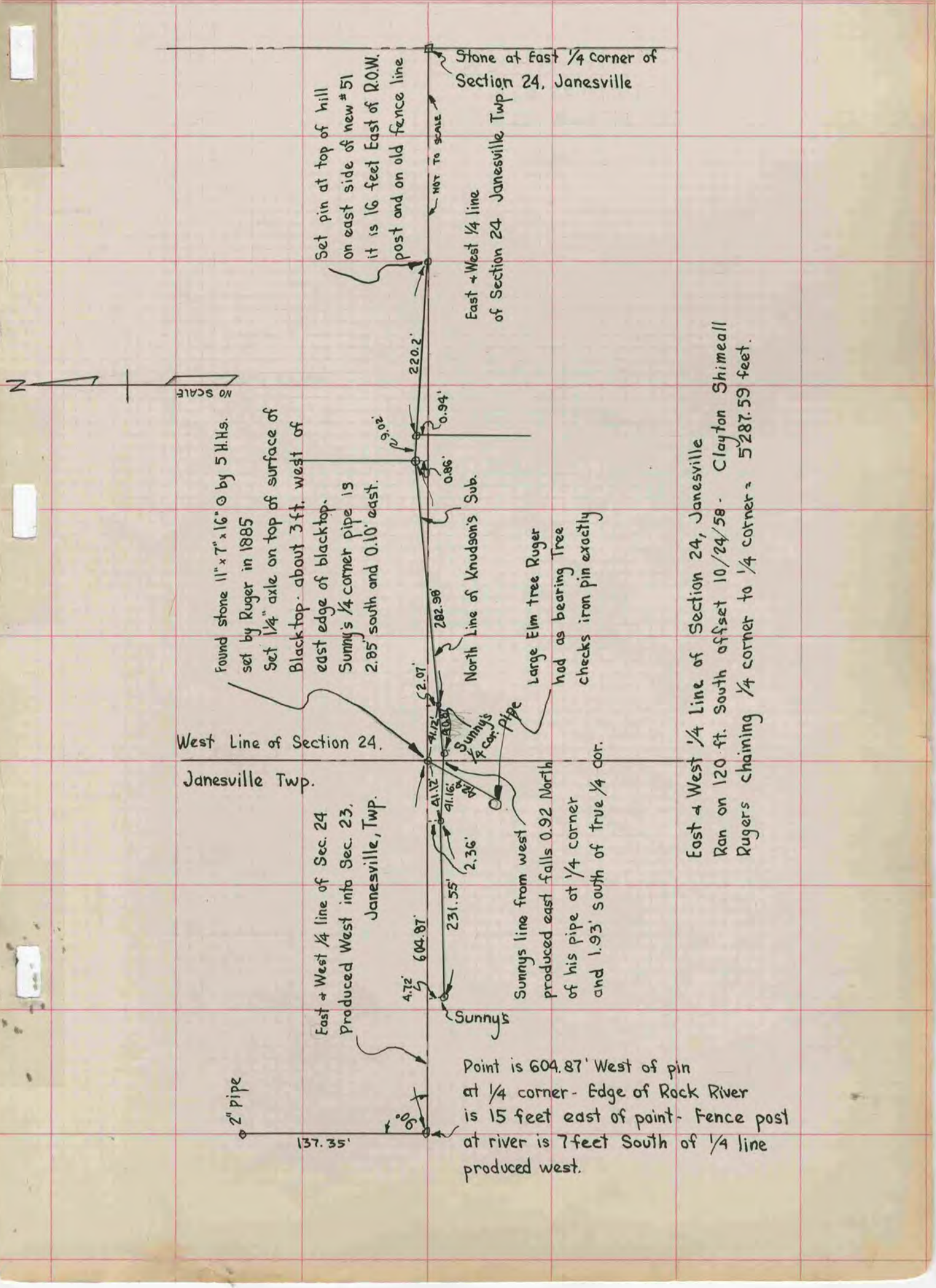
Rock County, Wisconsin, made October the 24th 1958

I hereby certify that the following is a correct record of said survey as made by me.

R. B. Batteman

County Surveyor.

MICROFILMED



Found stone 11" x 7" x 16" \odot by 5 H.H.s.
set by Ruger in 1885
Set 1/4" axle on top of surface of
Blacktop - about 3 ft. west of
east edge of blacktop.
Sunny's 1/4 corner pipe is
2.85' south and 0.10' east.

West Line of Section 24.
Janesville Twp.

East + West 1/4 line of Sec. 24
Produced West into Sec. 23,
Janesville, Twp.

Point is 604.87' West of pin
at 1/4 corner - Edge of Rock River
is 15 feet east of point - Fence post
at river is 7 feet South of 1/4 line
produced west.

Sunny's line from west
produced east falls 0.92 North
of his pipe at 1/4 corner
and 1.93' south of true 1/4 cor.

North Line of Knudson's Sub.
Large Elm tree Ruger
had as bearing Tree
checks iron pin exactly

East + West 1/4 Line of Section 24, Janesville
Ran on 120 ft. South offset 10/24/58 - Clayton Shimeall
Rugers chaining 1/4 corner to 1/4 corner = 5287.59 feet.

Set pin at top of hill
on east side of new # 51
it is 16 feet East of R.O.W.
post and on old fence line

Stone at East 1/4 Corner of
Section 24, Janesville

East + West 1/4 line
of Section 24 Janesville Twp