

PLAT AND RECORD

COUNTY BUILDING
CITY OF JANESVILLE

Of a Survey on Section S.E. 1/4 26 T 1 R 10 E. of the 4 P. M. in Avon Township

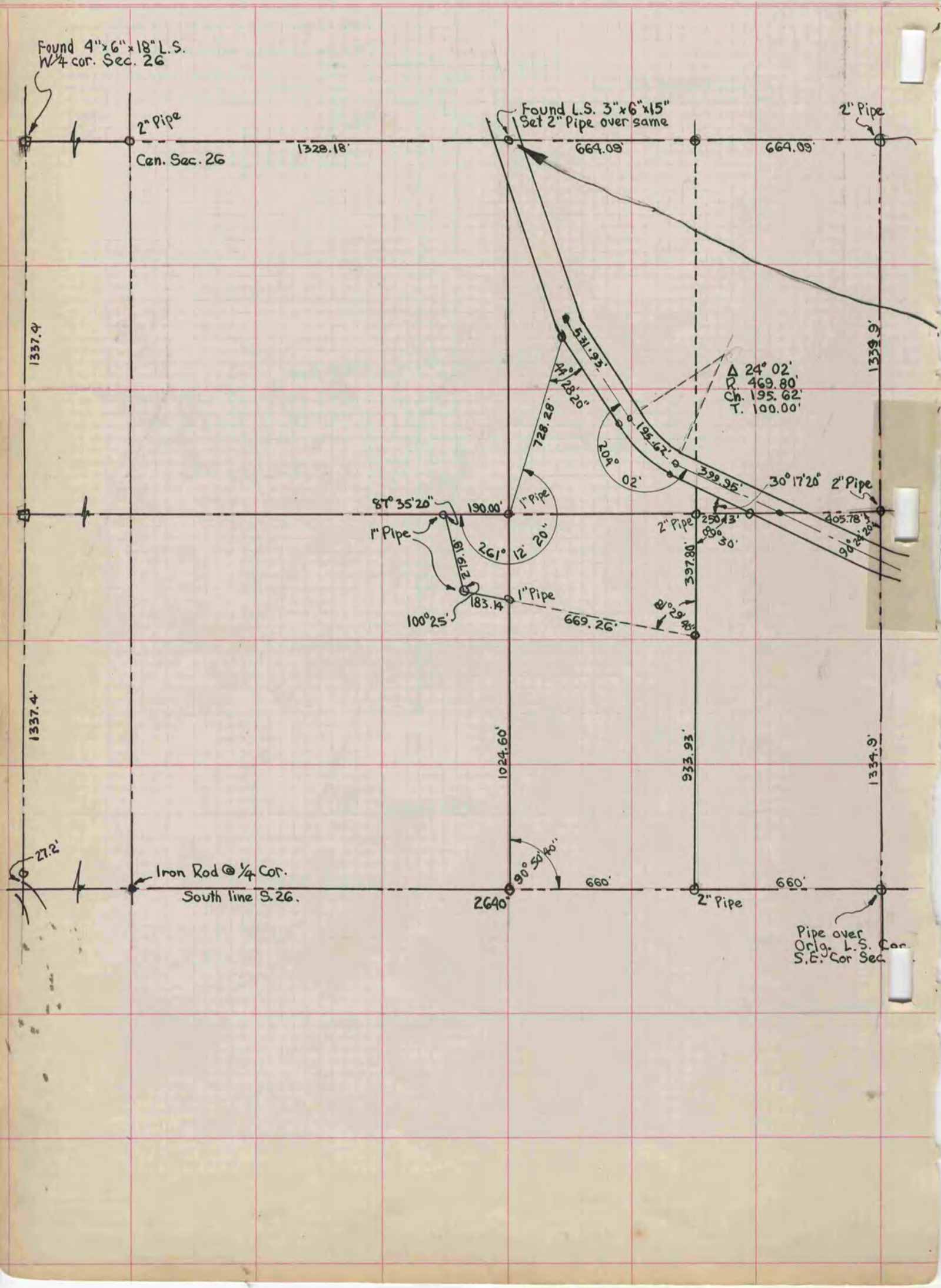
Rock County, Wisconsin, made December the 8th 1958

I hereby certify that the following is a correct record of said survey as made by me.

MICROFILMED

R. B. Bennett

County Surveyor.



Found 4"x6"x18" L.S.
W 1/4 cor. Sec. 26

Found L.S. 3"x6"x15"
Set 2" Pipe over same

2" Pipe
Cen. Sec. 26

2" Pipe

1337.4

1337.4

1339.9

1339.9

87° 35' 20"

1" Pipe

100° 25'

1" Pipe

1024.60'

90° 50' 40"

2640'

Iron Rod @ 1/4 Cor.
South line S. 26.

190.00'

1" Pipe

183.14'

1" Pipe

728.28'

2" Pipe

669.26'

2" Pipe

660'

660'

2" Pipe

933.93'

2" Pipe

250.43'

30° 17' 20"

2" Pipe

397.80'

90° 30'

2" Pipe

405.78'

90° 29' 40"

2" Pipe

399.95'

2" Pipe

24° 02'
469.80'
195.62'
100.00'

Pipe over
Orig. L.S. Cor.
S.E. Cor Sec