

# PLAT AND RECORD

v-3 389

PG 379 BELoit  
REC 12/16/75 DAB

Of a Survey on  $\frac{S.W.}{4}$  Section 23 T 4 N. R 10 E. of the 4 P. M. in Union Township

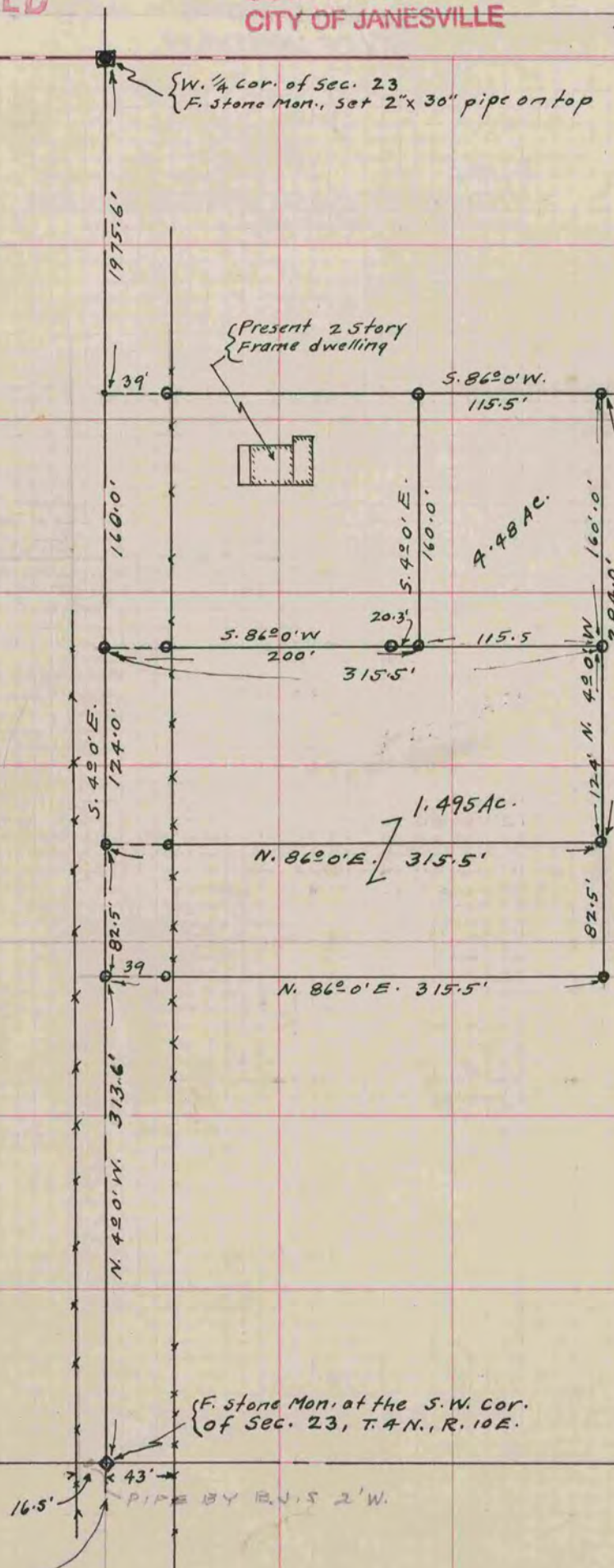
Rock County, Wisconsin, made Nov. the 18, 1938.

I hereby certify that the following is a correct record of said survey as made by me.

**MICROFILMED**

COUNTY BUILDING  
CITY OF JANESVILLE

*B. J. Sunny*  
County Surveyor.



See page 405