

MICROFILMED

PLAT AND RECORD

v-3 381

COUNTY BUILDING
CITY OF JANESVILLE

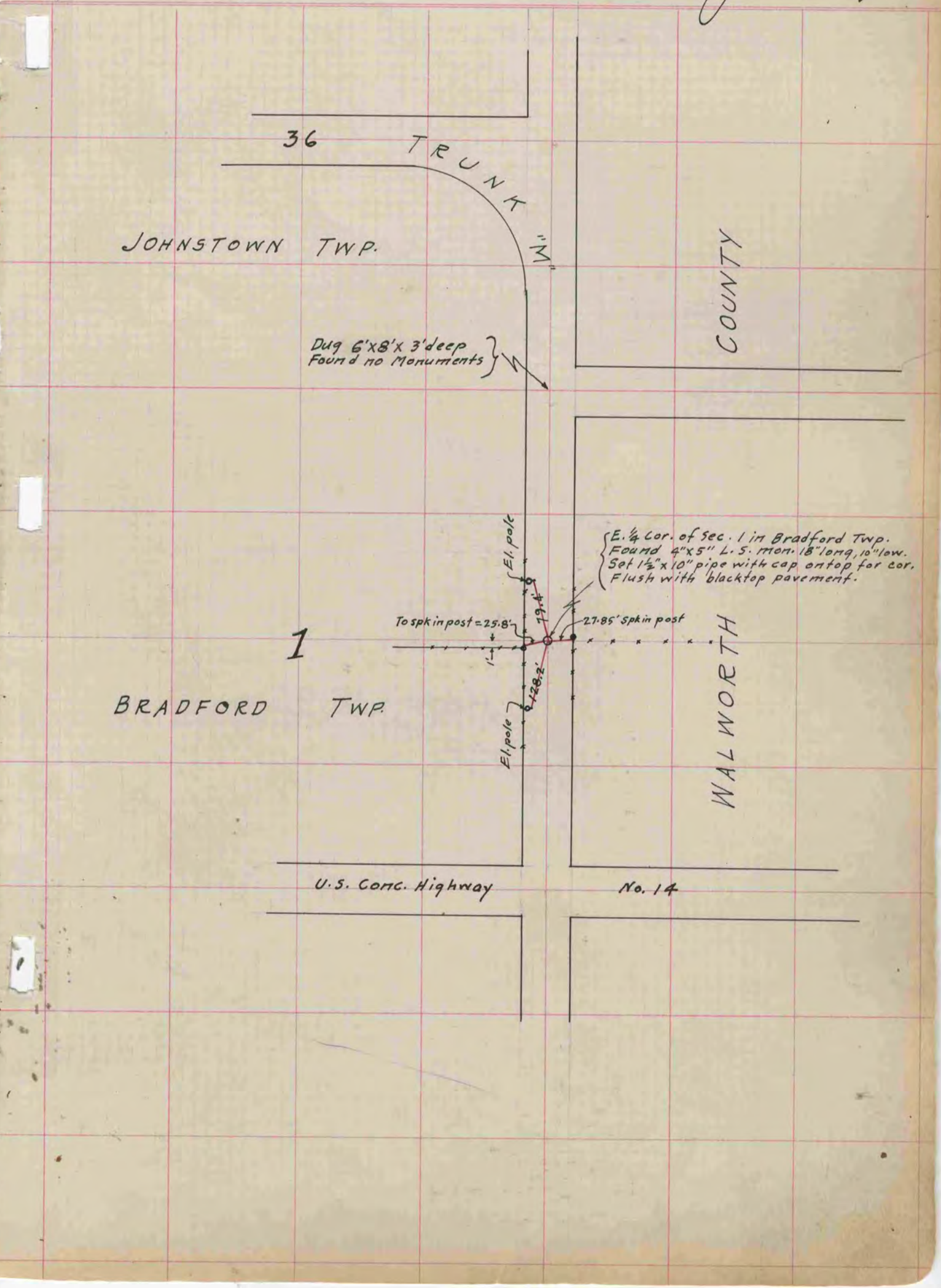
PG 349 BELoit REC
12/16/75 DAB

Of a Survey on Section 1 T. 2N. R. 14 E. of the 4 P. M. in Bradford Township

Rock County, Wisconsin, made between June 28 & Dec. 3, 1937.

I hereby certify that the following is a correct record of said survey as made by me.

B. Sunny
County Surveyor.



Dug 6'x8'x3'deep
Found no Monuments

E. 1/4 Cor. of sec. 1 in Bradford Twp.
Found 4" x 5" L.S. Mon. 18" long, 10" low.
Set 1 1/2" x 10" pipe with cap on top for cor.
Flush with blacktop pavement.

To spk in post = 25.8'

27.85' spk in post

El. pole

El. pole

1

U.S. Cong. Highway

No. 14