

12/15/75 DAB

# PLAT AND RECORD

V-3

S.W. 1/4

Of a Survey on Section 23 T 3N R 12 E. of the 4 P. M. in Jamesville Township

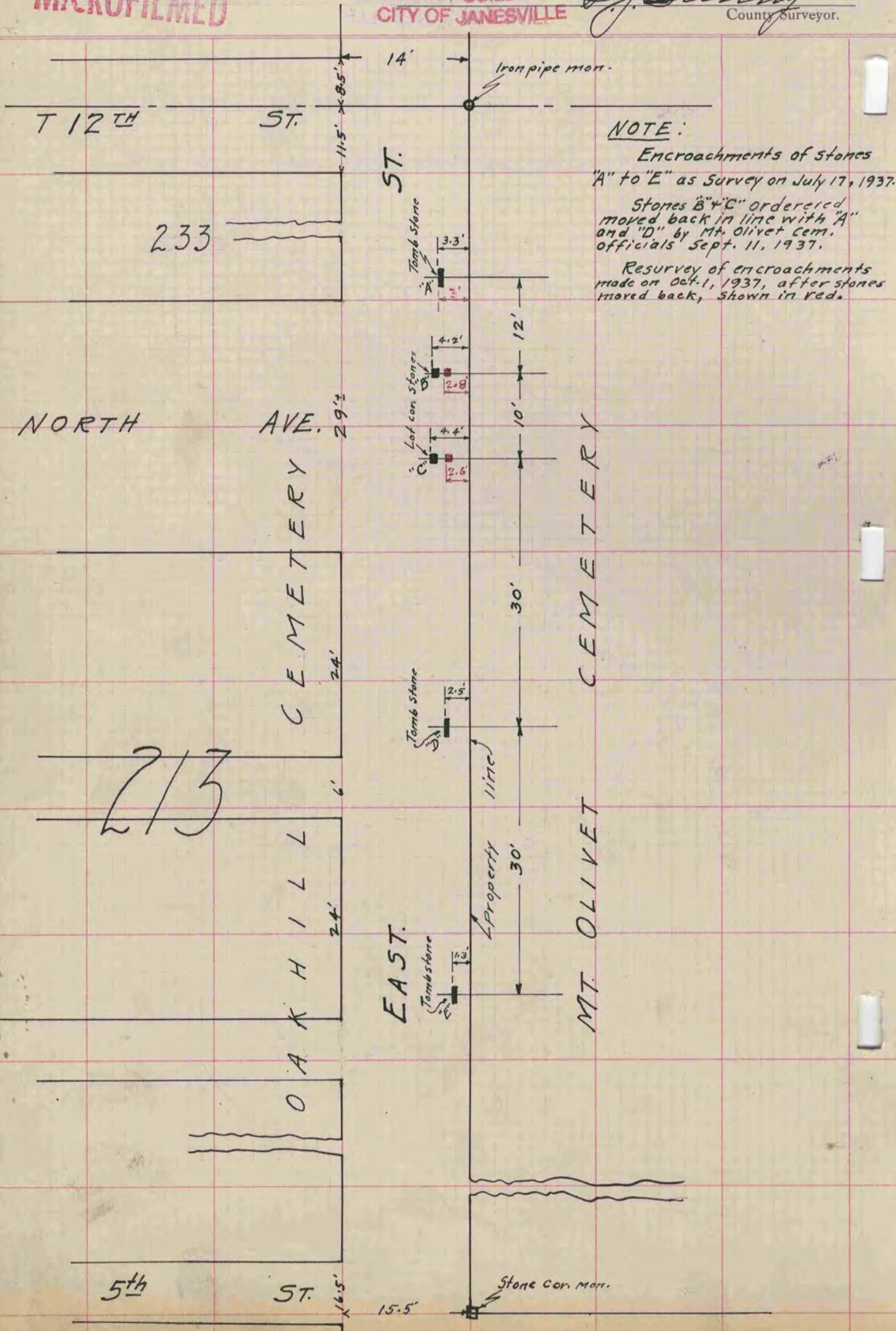
Rock County, Wisconsin, made July the 17 1937  
Oct. the 1 1937

I hereby certify that the following is a correct record of said survey as made by me.

**MICROFILMED**

COUNTY BUILDING  
CITY OF JAMESVILLE

*B. J. Sunny*  
County Surveyor.



**NOTE:**  
 Encroachments of stones  
 "A" to "E" as Survey on July 17, 1937.  
 Stones "B" & "C" ordered  
 moved back in line with "A"  
 and "D" by Mt. Olivet Cem.  
 officials Sept. 11, 1937.  
 Resurvey of encroachments  
 made on Oct. 1, 1937, after stones  
 moved back, shown in red.