

340 V-3

PG 335 BELoit REC

PLAT AND RECORD

12/15/75 DAB

N.E. 1/4 of S.E. 1/4 of Sec. 23
N.W. 1/4 of S.W. 1/4 of " 24

Of a Survey on Section T 3 N. R 12 E. of the 4 P. M. in Jamesville Township

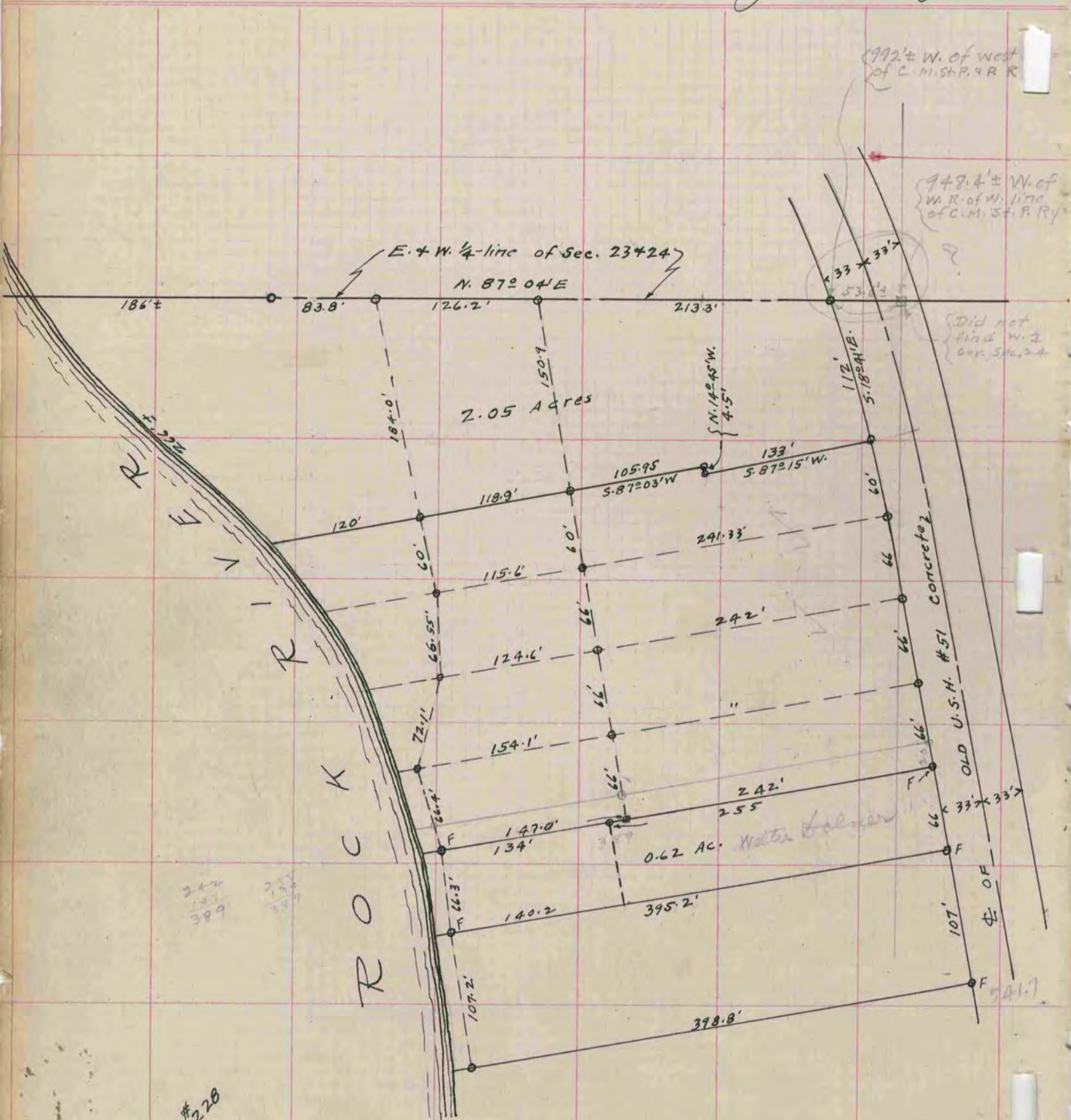
Rock County, Wisconsin, made August 1937
November the 27 1937

MICROFILMED

I hereby certify that the following is a correct record of said survey as made by me.

COUNTY BUILDING
CITY OF JANESVILLE

B. Bunny
County Surveyor.



NOTE:
Also see page #228