

330 V-3

PG 325 BELOIT REC

# PLAT AND RECORD

12/15/75 DAB S. 1/2 OF N. E. 1/4

Of a Survey on Section 11 T. 1 N., R. 12 E. of the 4 P. M. in Beloit Township

Rock County, Wisconsin, made May the 13, 1937

I hereby certify that the following is a correct record of said survey as made by me.

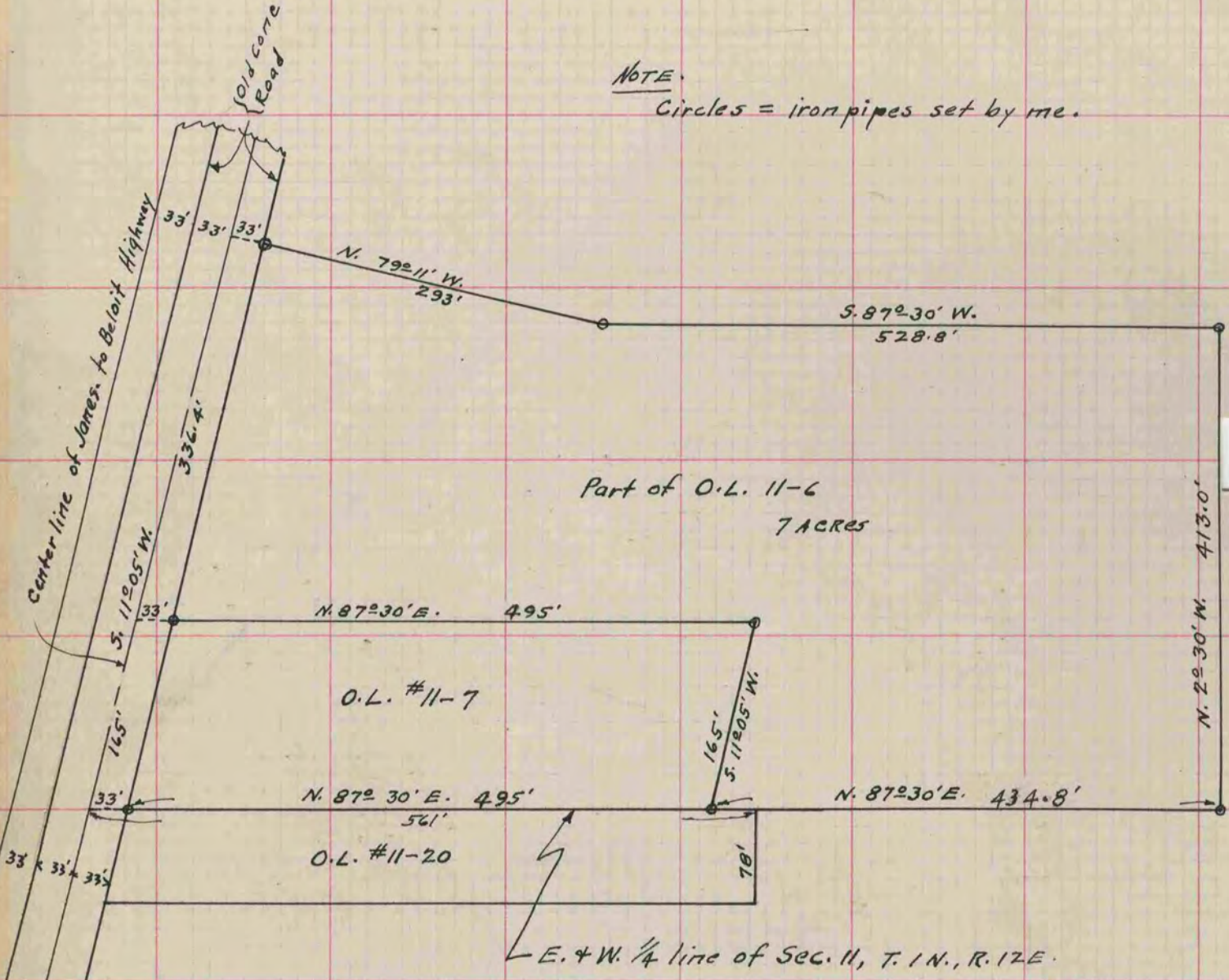
**MICROFILMED**

COUNTY BUILDING  
CITY OF JANESVILLE

*B. Bunny*  
County Surveyor.

NOTE

Circles = iron pipes set by me.



E. & W. 1/4 line of Sec. 11, T. 1 N., R. 12 E.