

PLAT AND RECORD

PG 292 BELOIT REC

COUNTY BUILDING
CITY OF JANESVILLE

12/15/75 DAB 21, 22
Of a Survey on Sections 27 & 28 T. 3 N. R. 13 E. of the 4 P. M. in Harmony Township

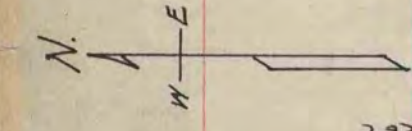
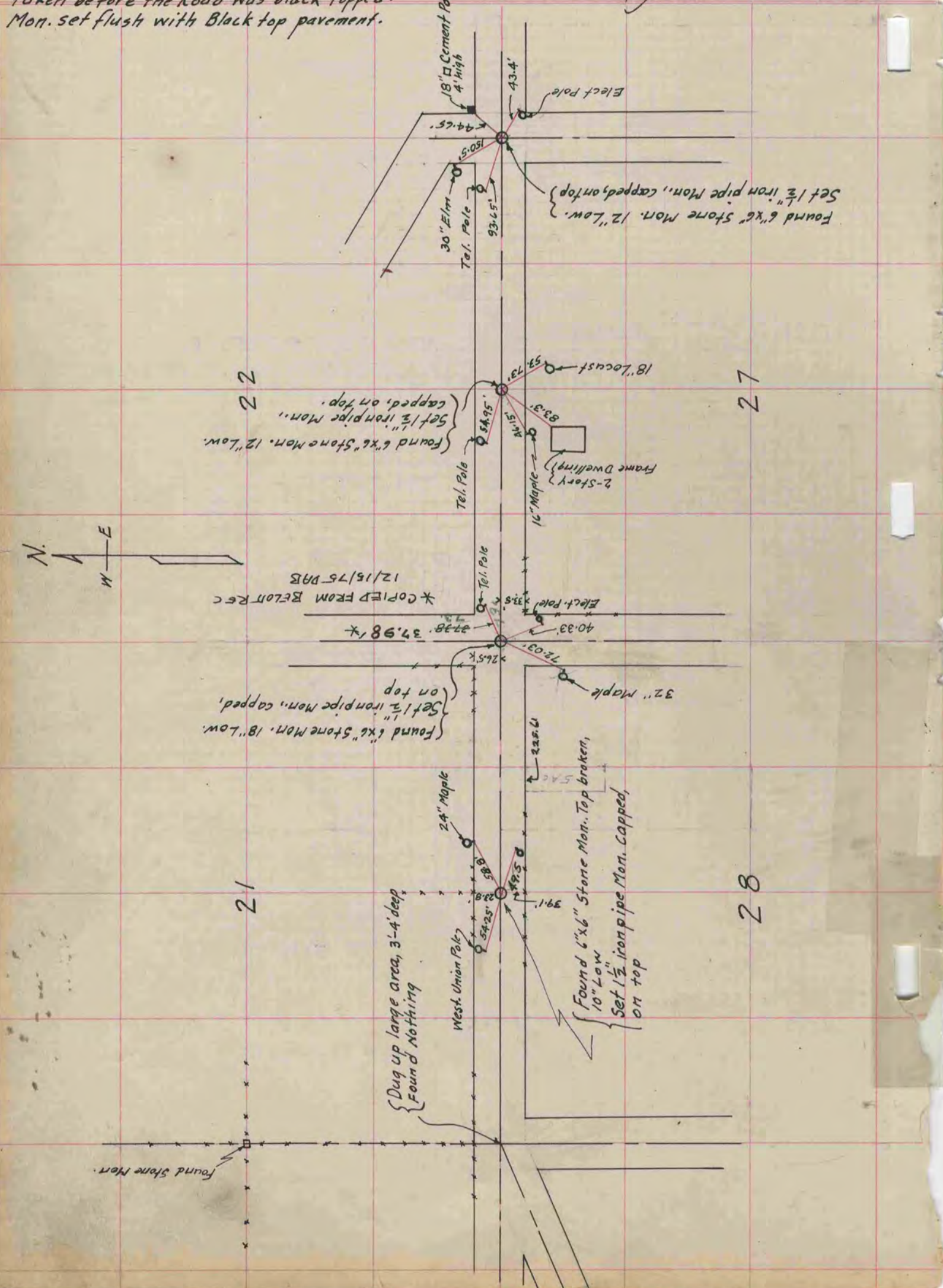
Rock County, Wisconsin, made between July 1 & Dec. 18 1936

I hereby certify that the following is a correct record of said survey as made by me.

B. J. Bunney
County Surveyor.

NOTE:

All references are to a 40d. spk. in Poles & blazed trees.
taken before the Road was black topped.
Mon. set flush with Black top pavement.



Found Stone Mon.

Dug up large area, 3-4' deep
Found Nothing

Found 6" x 6" Stone Mon. 18" Low.
Set 1 1/2" iron pipe Mon. capped,
on top

32" Maple

24" Maple

West Union Pole

Found 6" x 6" Stone Mon. Top broken,
10" Low
Set 1 1/2" iron pipe Mon. Capped,
on top

2-Story Frame Dwelling
16" Maple

Found 6" x 6" Stone Mon. 12" Low.
Set 1 1/2" iron pipe Mon., capped, on top.

18" Locust

30" Elm
Tel. Pole

18" Cement Post
4' high

Elect. Pole

43.4'

44.65'

150.5'

93.65'

4.5'

83.3'

40.33'

37.98'

26.5'

72.03'

225.6'

5.4'

39.1'

54.25'

58.8'

59.5'

22.5'

21

22

27

28

* COPIED FROM BELOIT REC
12/15/75 DAB

MICROFILMED