

294 v.3

# PLAT AND RECORD

PG 288 BELOIT REC

COUNTY BUILDING  
CITY OF JANESVILLE

12/15/75 DAB

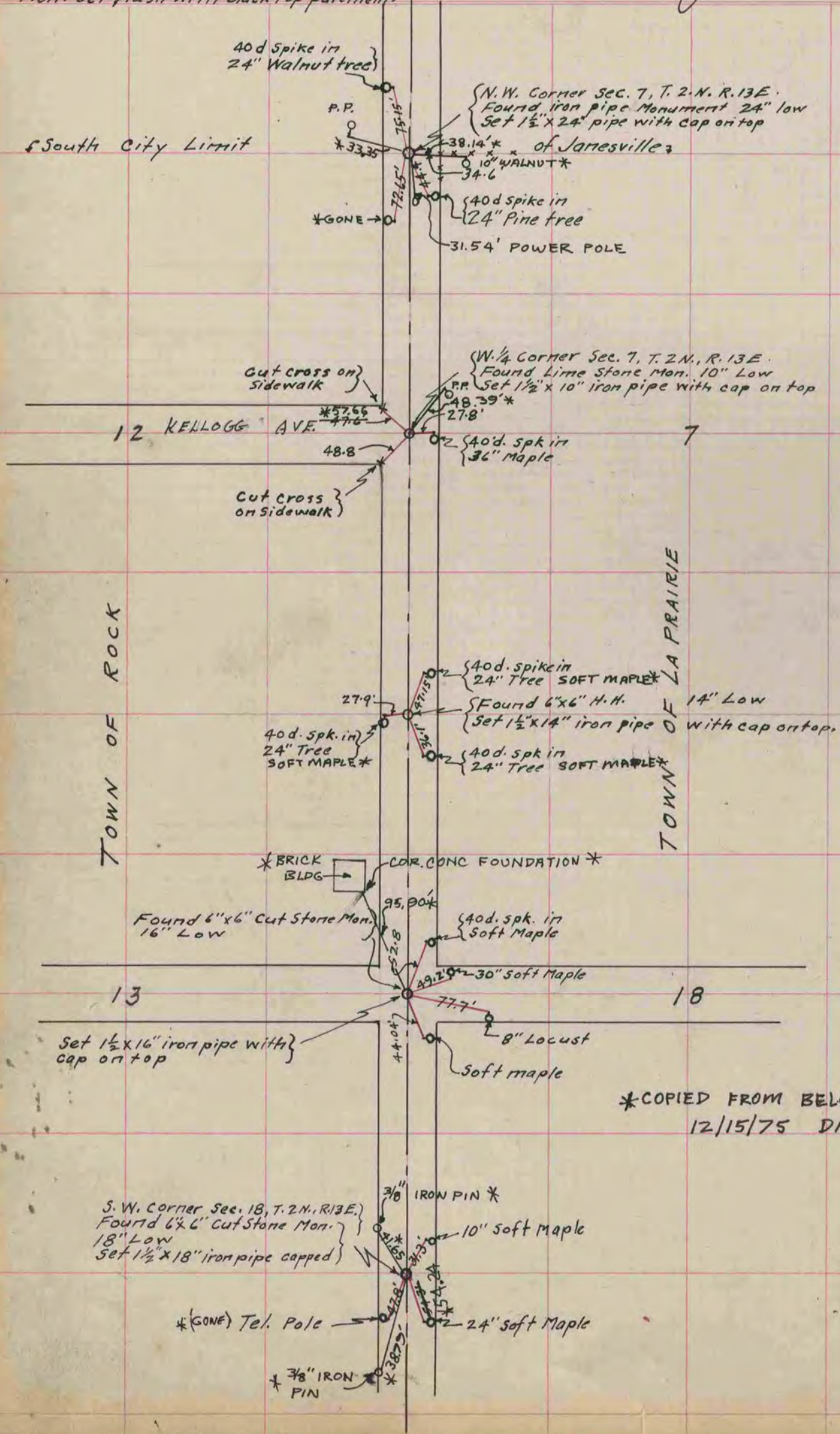
Of a Survey on Sections 7 & 18 T. 2N. R. 13 E. of the 4 P. M. in La Prairie Township  
 " " " " 12 & 13 T. 2N. R. 12 E. " " " " " Rock " "  
 Rock County, Wisconsin, made Between July 1 & Dec. 18 the 1976

I hereby certify that the following is a correct record of said survey as made by me.

**MICROFILMED**

*B. Sunny*  
County Surveyor.

**NOTE:** All references are to a 40 d. spk. in Poles & Blazed trees, taken before Road was Blacktopped. Mon. Set flush with Black top pavement.



\*COPIED FROM BELOIT REC  
12/15/75 DAB