

278 V-3

# PLAT AND RECORD

PG 272 BELOIT REC

City of Evansville

12/15/75 DAB O.L. 9+

Of a Survey on Section SE 1/4 27 T 4 N. R 10 E. of the 4 P. M. in Union Township

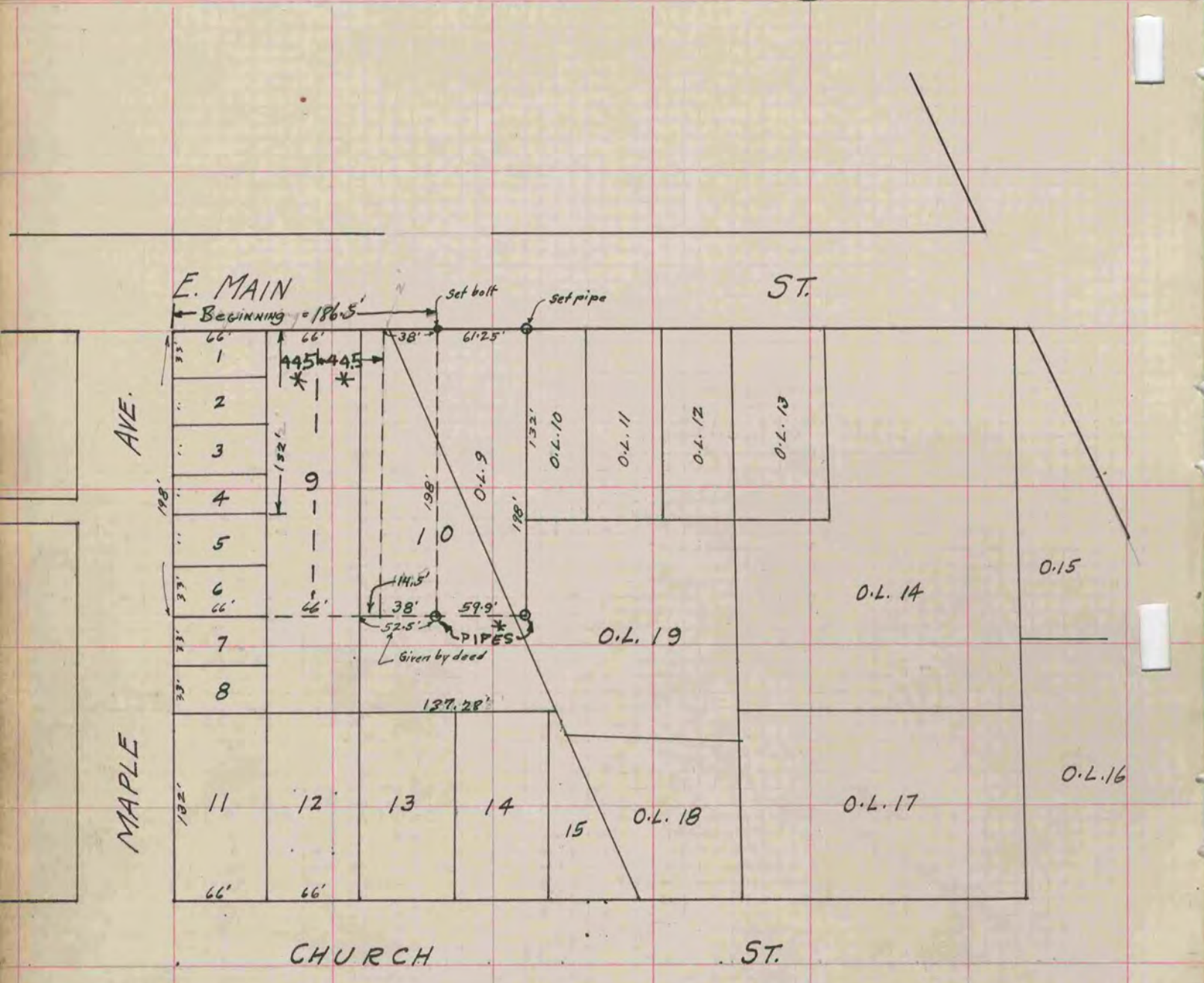
Rock County, Wisconsin, made November the 9 1935

I hereby certify that the following is a correct record of said survey as made by me.

**MICROFILMED**

**COUNTY BUILDING  
CITY OF JANESVILLE**

*B. J. Sunny*  
County Surveyor.



\* COPIED FROM BELOIT REC  
12/15/75 DAB