

PLAT AND RECORD

PG 246 BELOIT REC

12/15/75 DAB

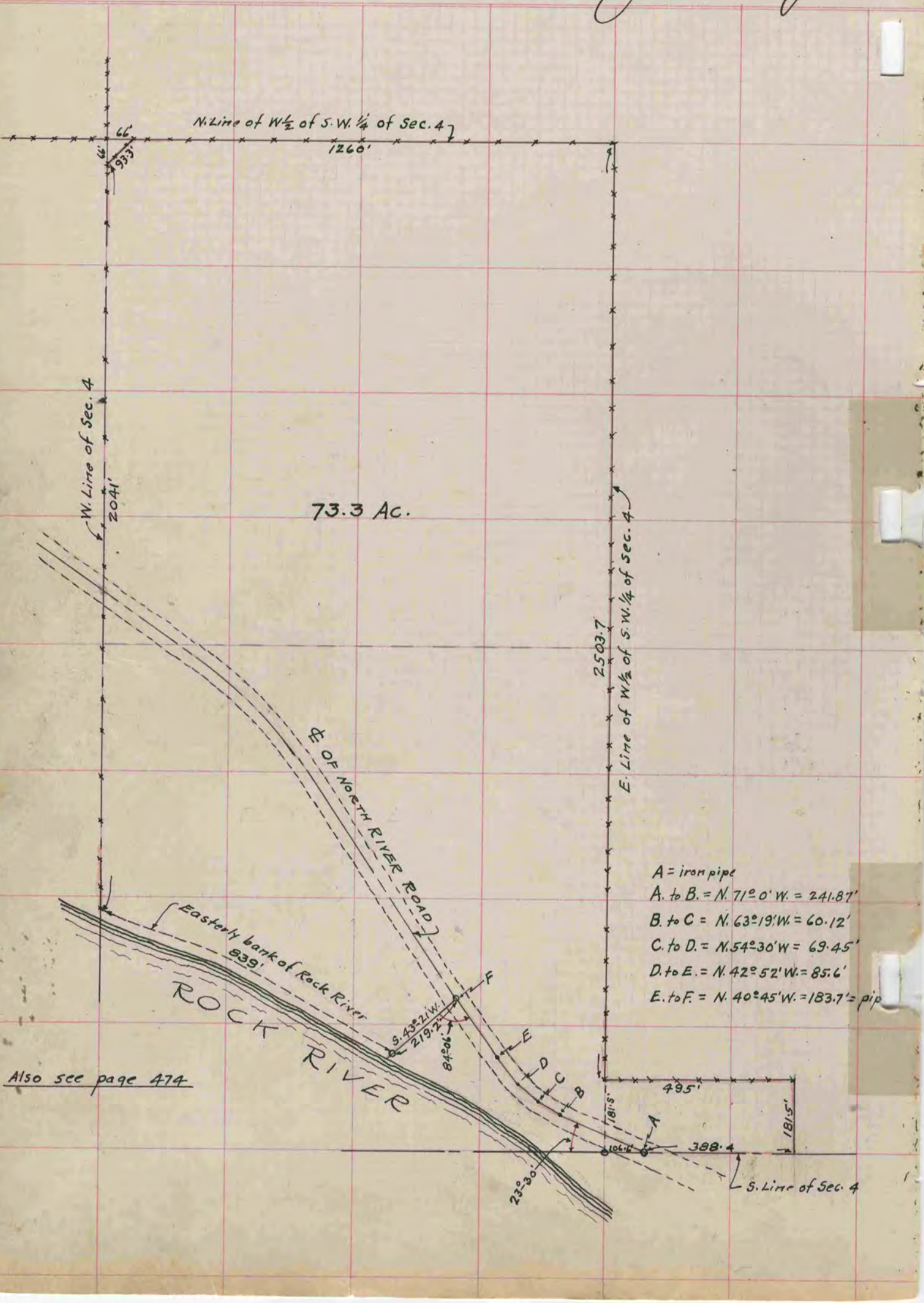
Of a Survey on Section 4 T3N R12 E. of the 4 P. M. in **JANESVILLE** Township

Rock County, Wisconsin, made Oct. the 17 1934

I hereby certify that the following is a correct record of said survey as made by me.

MICROFILMED

B. J. Sunny
County Surveyor.



- A = iron pipe
- A. to B. = N. 71° 0' W. = 241.87'
- B. to C. = N. 63° 19' W. = 60.12'
- C. to D. = N. 54° 30' W. = 69.45'
- D. to E. = N. 42° 52' W. = 85.6'
- E. to F. = N. 40° 45' W. = 183.7' = pip

Also see page 474