

# PLAT AND RECORD

V-3 285

PG 230

**MICROFILMED**

Of a Survey on Section 34 35 T. 3N. R. 11E. Center  
243 T. 2N. R. 11 E. of the 4 P. M. in Plymouth

BELOIT REC 12/15/75  
DAB Township

Rock County, Wisconsin, made May, Aug. Oct. the \_\_\_\_\_ 1933.

I hereby certify that the following is a correct record of said survey as made by me.

COUNTY BUILDING  
CITY OF JANESVILLE

*B. J. Sunny*  
County Surveyor.

WORK SHOWN IN RED  
DONE BY R. H. BATTERMAN JR.  
APRIL 21, 1958  
1" PIPES SET AT REFERENCE PTS.

34

35

Center Twp.

State Highway #20

Plymouth Twp.

40 links = 26.4' Offset

20 links = 13.2' Offset

5 links = 3.3' Offset

1 link = 0.66' Offset

26.45' 4'

26.53.6

26.56.9'

26.56.9'

26.56.9'

Set 1"x36" iron pipe  
in Conc. Pavment  
1.7' N. of E. of same

Set 1"x36" pipe  
in Conc. Pavment  
0.4' N. of same

Set 1"x36" pipe  
in Conc. Pavment  
7.9' N. of E. of same  
in line with fence N.

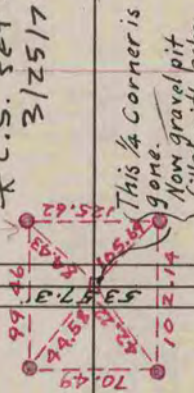
Set 1"x36" pipe  
in Conc. Pavment  
80.5' of E. of same

FOUND 1" PIPE  
1 FOOT FROM NORTH  
EDGE OF PAVEMENT

Corner destroyed  
6"x6" Man. found lying on top  
of ground

\* C.S. SET 1" PIPE  
3/25/72

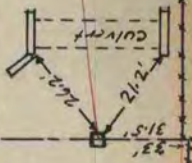
\* COPIED FROM BELOIT  
REC 12/15/75 PAS.



Found 6x6 Stone in line  
with fence N. & E. of Road E.  
Set 1" pipe on top

Found 6x6 Stone Man.  
Set 1 1/4" pipe on top of same  
16" Maple N. 66 1/2° E. 108.2'

FOUND 1 1/4" PIPE 1 FOOT DEEP



See Page 234

See Page 234

See page 234

2621.6'

2663.9'

5243.0'