

# PLAT AND RECORD

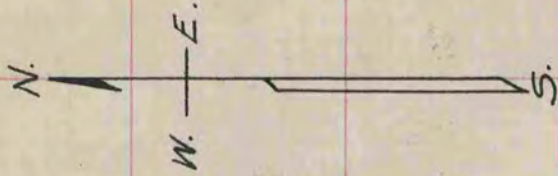
Of a Survey on <sup>S.W. 1/4 of SW 1/4</sup> Section 4 T 3N. R 12 E. of the 4 P. M. in Janesville Township  
Rock County, Wisconsin, made November the 4, 1932

I hereby certify that the following is a correct record of said survey as made by me.

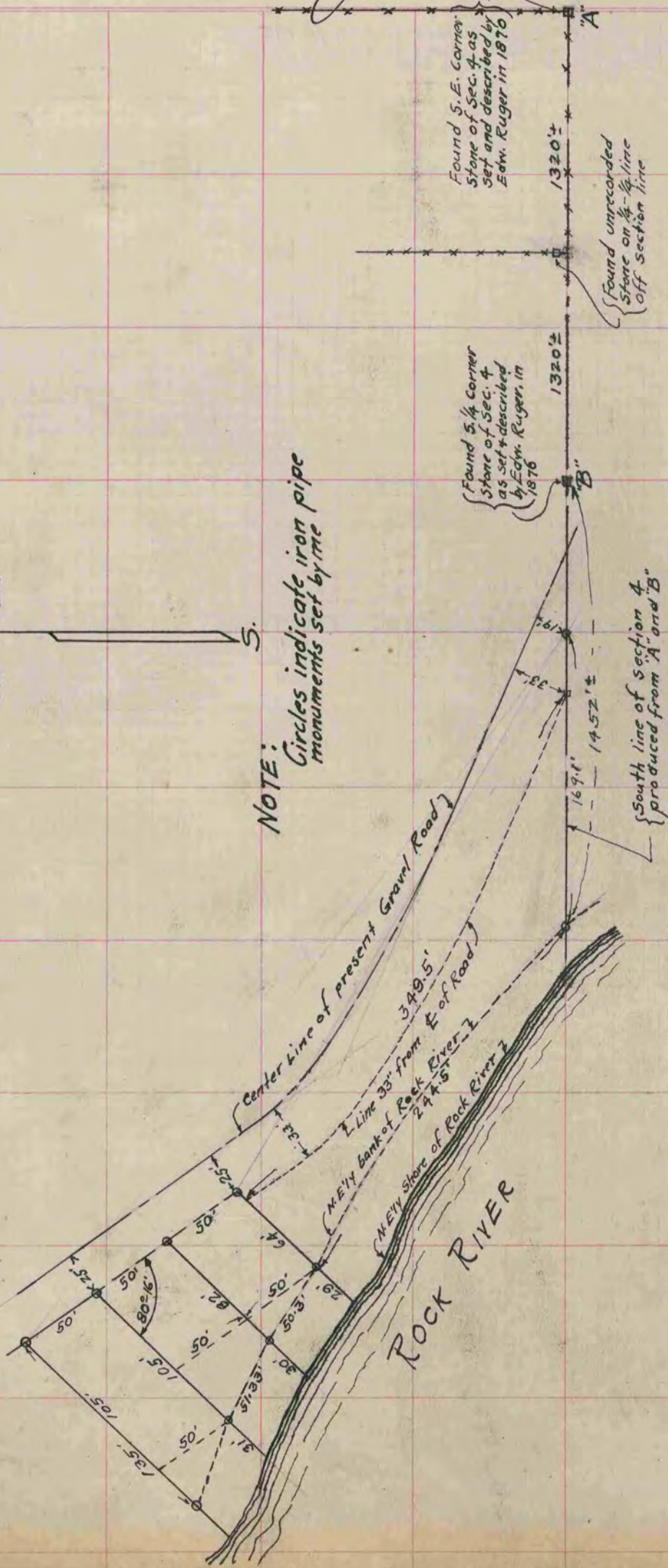
**MICROFILMED**

COUNTY BUILDING  
CITY OF JANESVILLE

*B. J. Sunny*  
County Surveyor.



NOTE:  
Circles indicate iron pipe  
monuments set by me



Found S.E. Corner  
Stone of Sec. 4 as  
set and described by  
Edw. Ruger in 1876

Found unrecorded  
Stone on 1/4-1/4 line  
(off section line)

Found S.W. Corner  
Stone of Sec. 4  
as set & described  
by Edw. Ruger in  
1876

South line of section 4  
produced from 'A' and 'B'