

PLAT AND RECORD

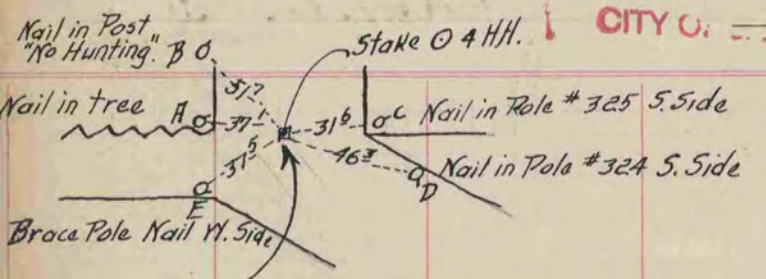
Of a Survey on Section 4, 3 & 11 T 3 R 12 E. of the 4 P. M. in Janesville Township

Rock County, Wisconsin, made April the 7th 9th 9th 1921

I hereby certify that the following is a correct record of said survey as made by me.

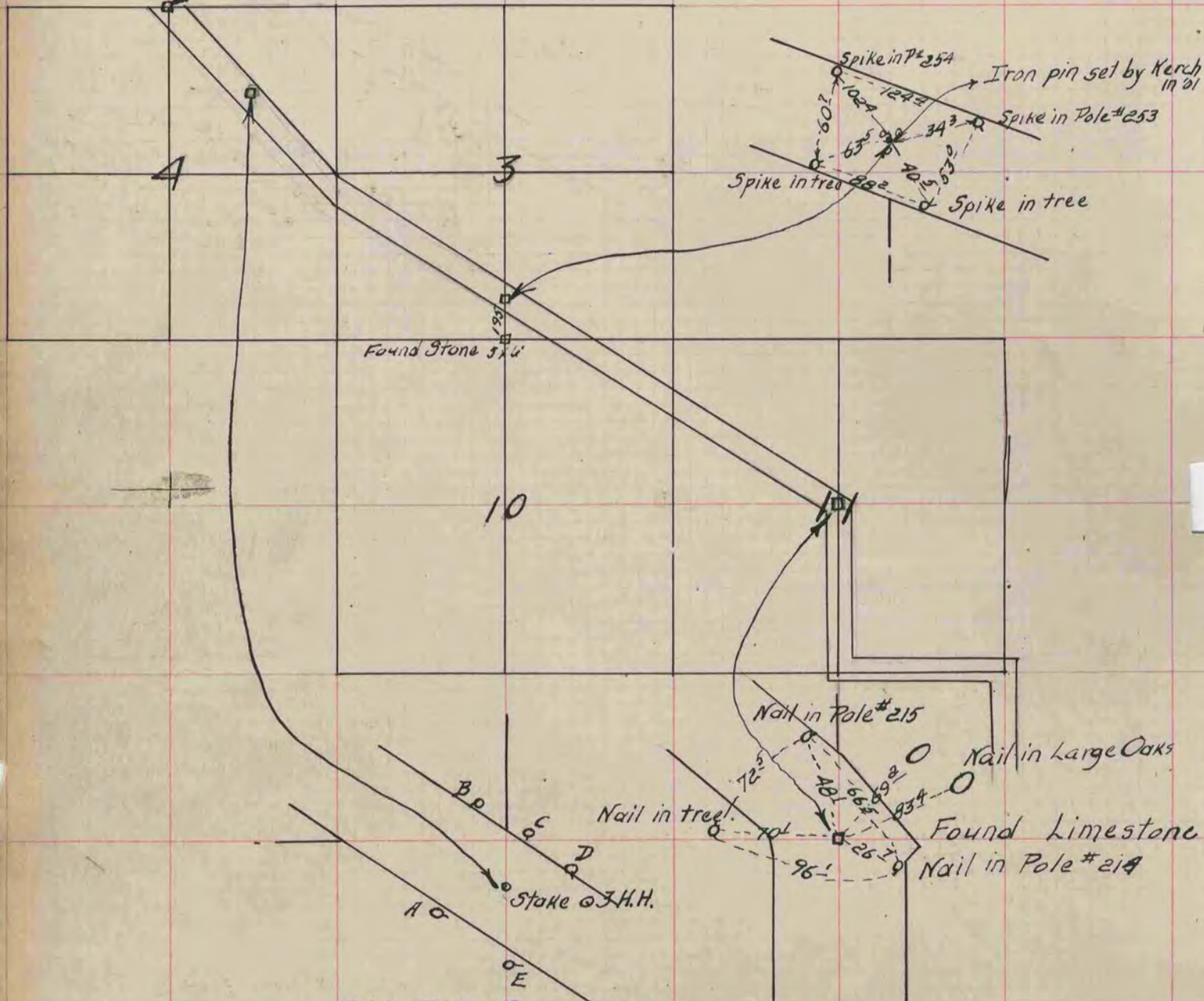
COUNTY BUILDING
CITY OF JANESVILLE

Alex. W. Ely
County Surveyor.



Dist. Between

A.B.	397
B.C.	686
C.D.	294
D.E.	634
E.A.	399



Point	Dist	Description
A	326	Nail in 5 th B. Walnut
B	404	" " 1 st " "
C	287	" " 4 th " "
D	415	" " 6 th " "
E	314	" " T. Pole