

V-3 MICROFILMED

# PLAT AND RECORD

Of a Survey on Section 28 T 4 R 10 E. of the 4 P. M. in Union Township

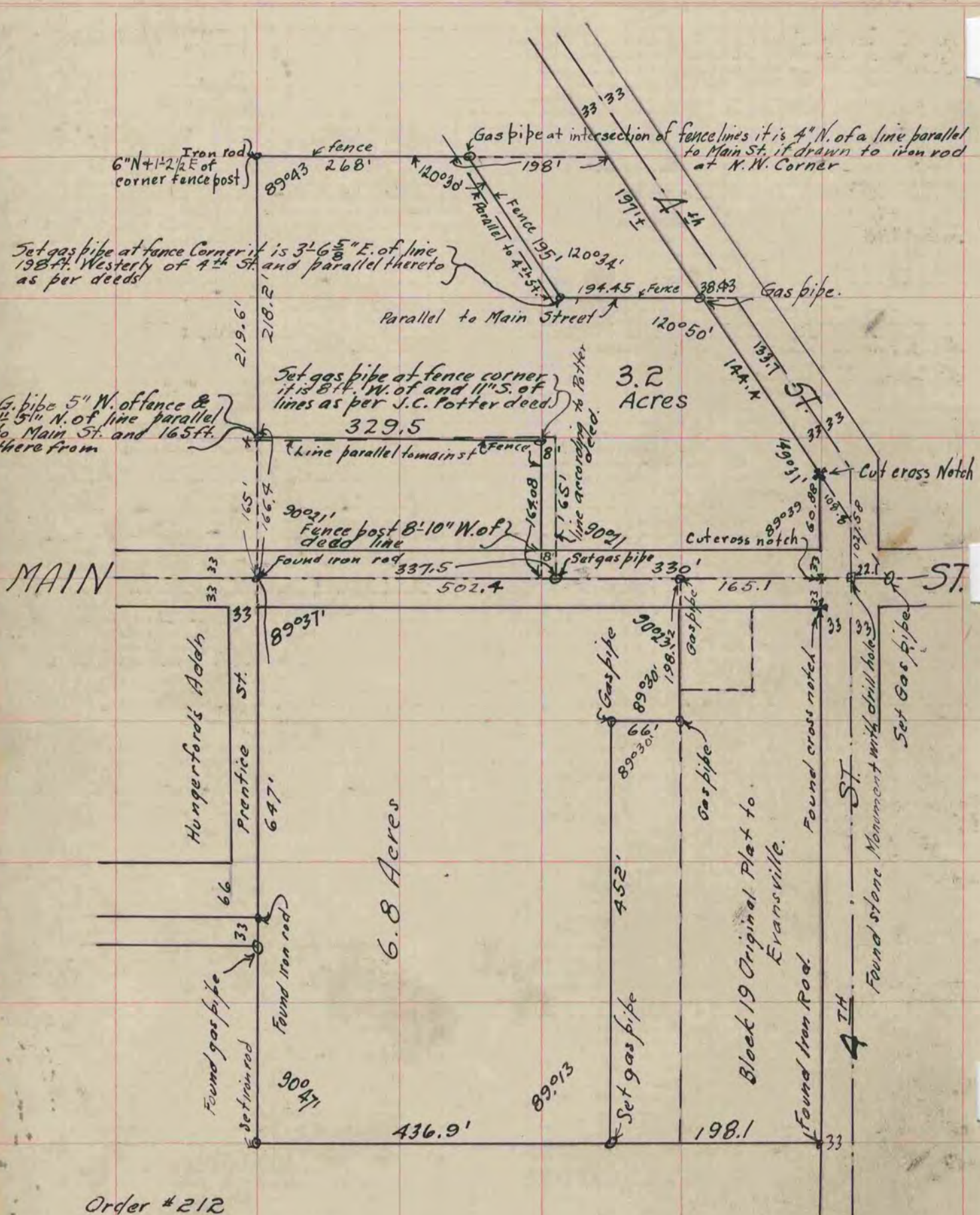
Rock County, Wisconsin, made June the 9<sup>th</sup> + 26<sup>th</sup> 1919

I hereby certify that the following is a correct record of said survey as made by me.

COUNTY BUILDING  
CITY OF JANESVILLE

*A. A. Battersman*

County Surveyor.



Order #212  
For Mrs. S. Conradson  
B4 P. 111-118