

MICROFILMED

PLAT AND RECORD

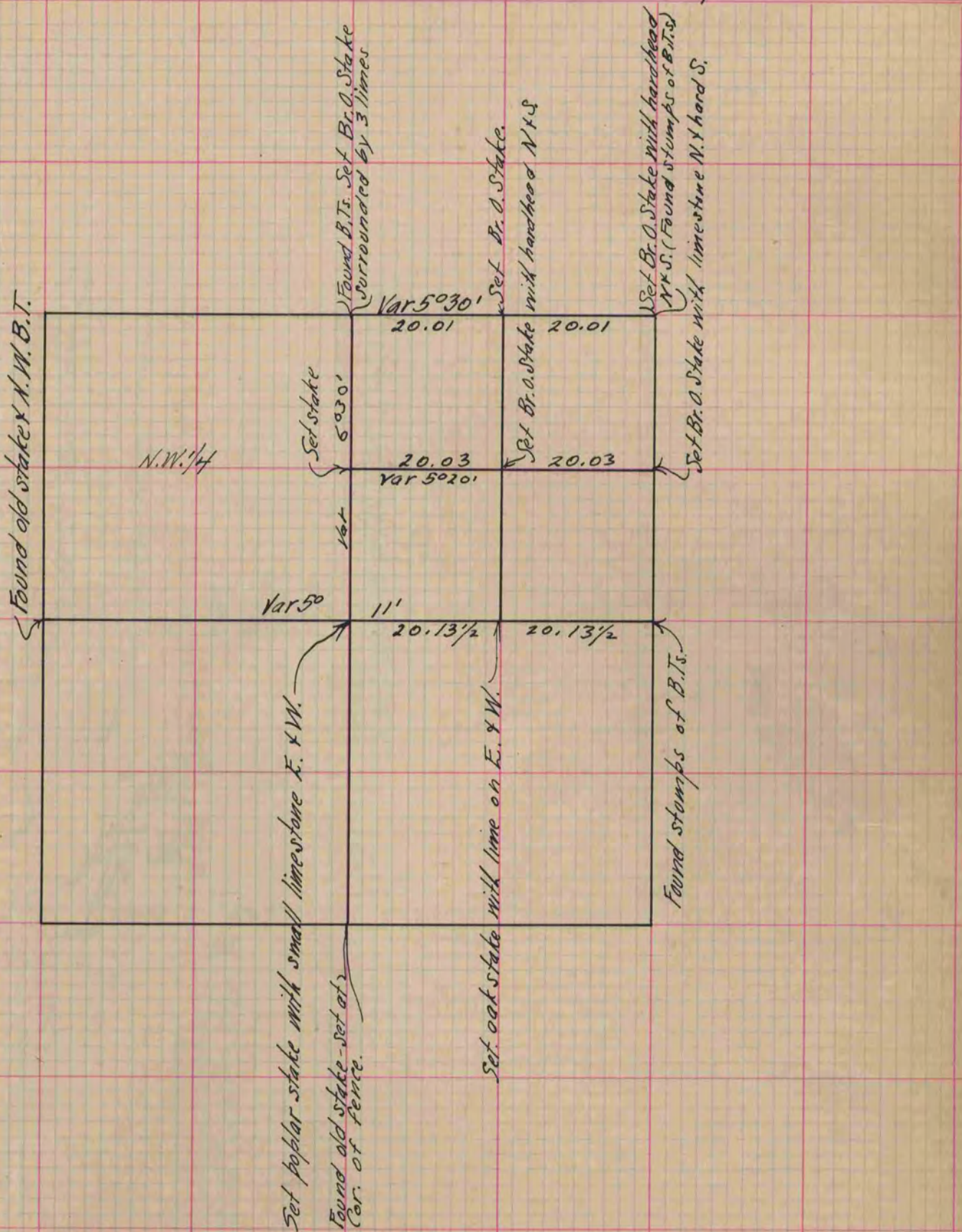
339
V-1

COUNTY BUILDING
CITY OF JANESVILLE

Of a Survey on Section 35 T 1 R 11 E. of the 4 P. M. in Newark Township
Rock County, Wisconsin, made April the 5th & 6th 1869

I hereby certify that the following is a correct record of said survey as made by me.

(Signed) R.K. Lee
R.H.B. Dep. County Surveyor.



Copied from Page 277 Vol. 1. Original County Surveyors Record