

V-1
MICROFILMED

PLAT AND RECORD

Of a Survey on Section 31 T 3 R 11 E. of the 4 P. M. in Center Township

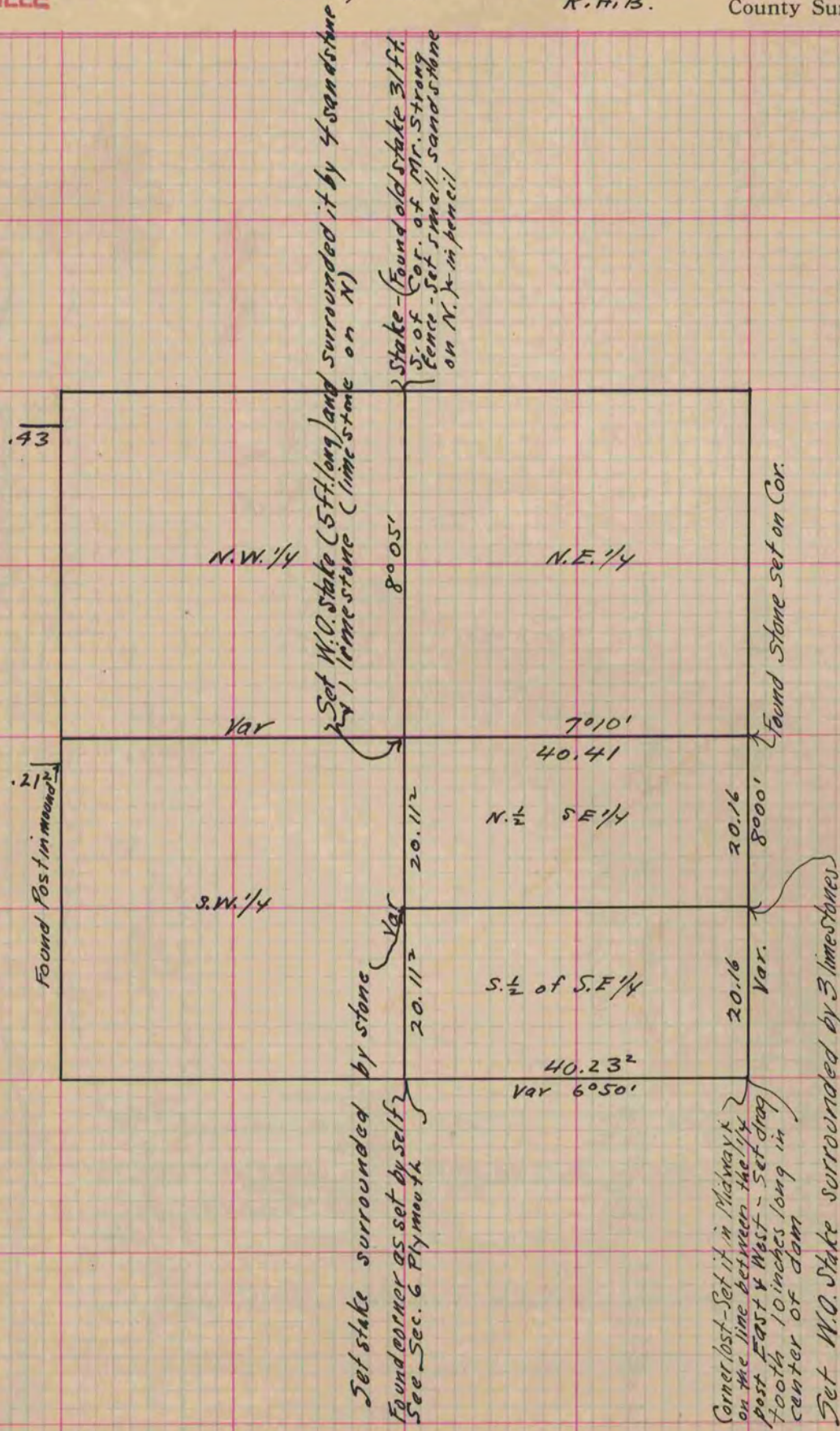
Rock County, Wisconsin, made December the 30 1867

I hereby certify that the following is a correct record of said survey as made by me.

COUNTY BUILDING
CITY OF JANESVILLE

(Signed) S. D. Locke
R. H. B.

County Surveyor.



Copied from Page 259 Vol. 1. Original County Surveyors Record