

PLAT AND RECORD

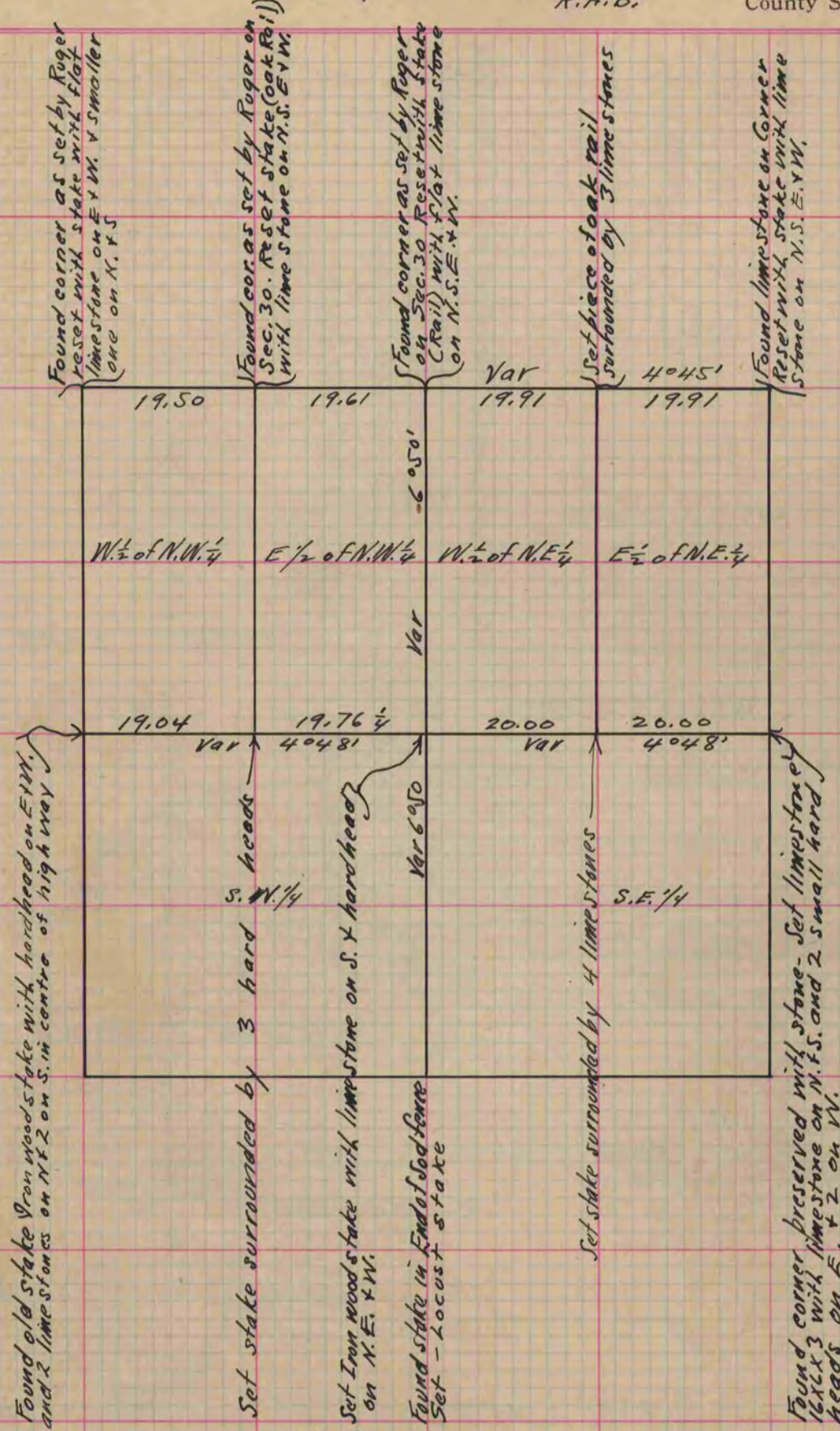
MICROFILMED

Of a Survey on Section 31 T 3 R 14 E. of the 4 P. M. in Johnstown Township

Rock County, Wisconsin, made November the 4 1867

COUNTY BUILDING CITY OF JANESVILLE I hereby certify that the following is a correct record of said survey as made by me.

(Signed) S.D. Locke
R.H.B. County Surveyor.



Copied from Page 255 Vol. 1. Original County Surveyors Record