

MICROFILMED

PLAT AND RECORD

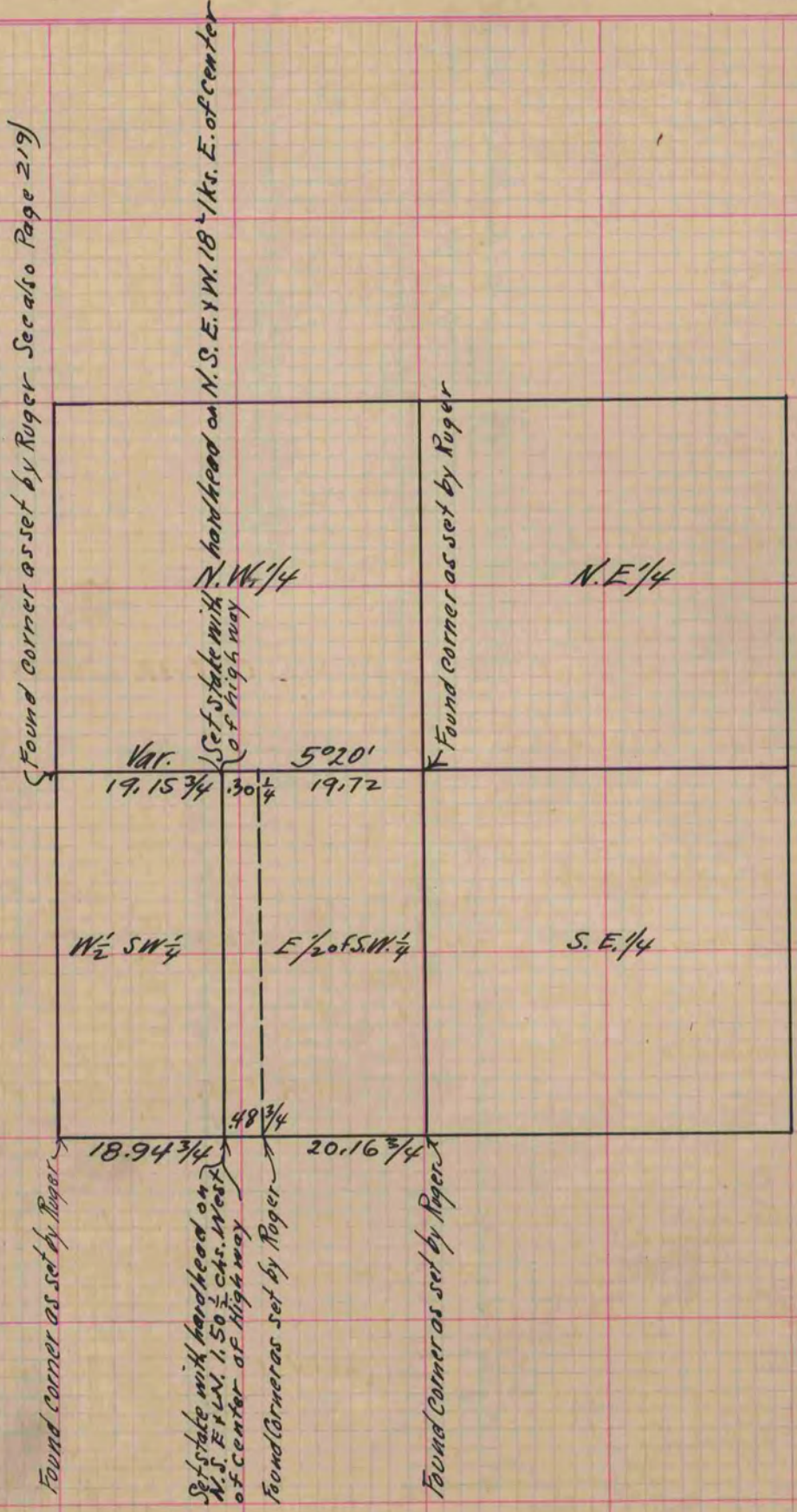
Of a Survey on Section 31 T 2 R 14 E. of the 4 P. M. in Bradford Township

Rock County, Wisconsin, made October the 26 1867

COUNTY BUILDING
CITY OF JANESVILLE

I hereby certify that the following is a correct record of said survey as made by me.

(Signed) S. D. Locke
R. H. B. County Surveyor.



Copied from Page 253 Vol. 1. Original County Surveyors Record