

MICROFILMED

PLAT AND RECORD

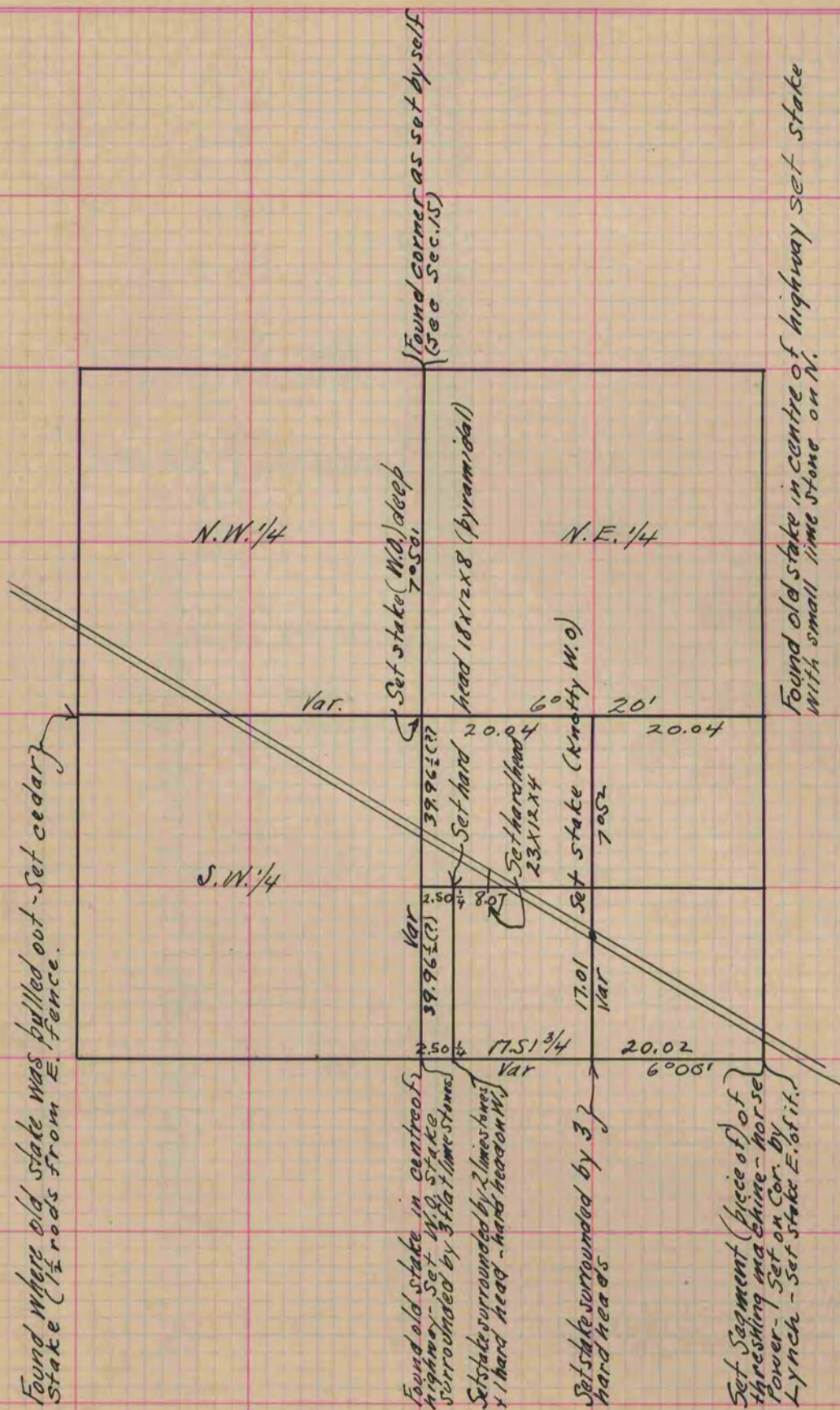
Of a Survey on Section 22 T 3 R 13 E. of the 4 P. M. in Harmony Township

Rock County, Wisconsin, made Oct. 22 nd the 1867

I hereby certify that the following is a correct record of said survey as made by me.

COUNTY BUILDING
CITY OF JANESVILLE

(Signed) S. D. Locke
R.H.B. County Surveyor.



Copied from Page 252 Vol. 1. Original County Surveyors Record