

V-1 MICROFILMED PLAT AND RECORD

Of a Survey on Section 2 T 2 R 13 E. of the 4 P. M. in La Prairie Township

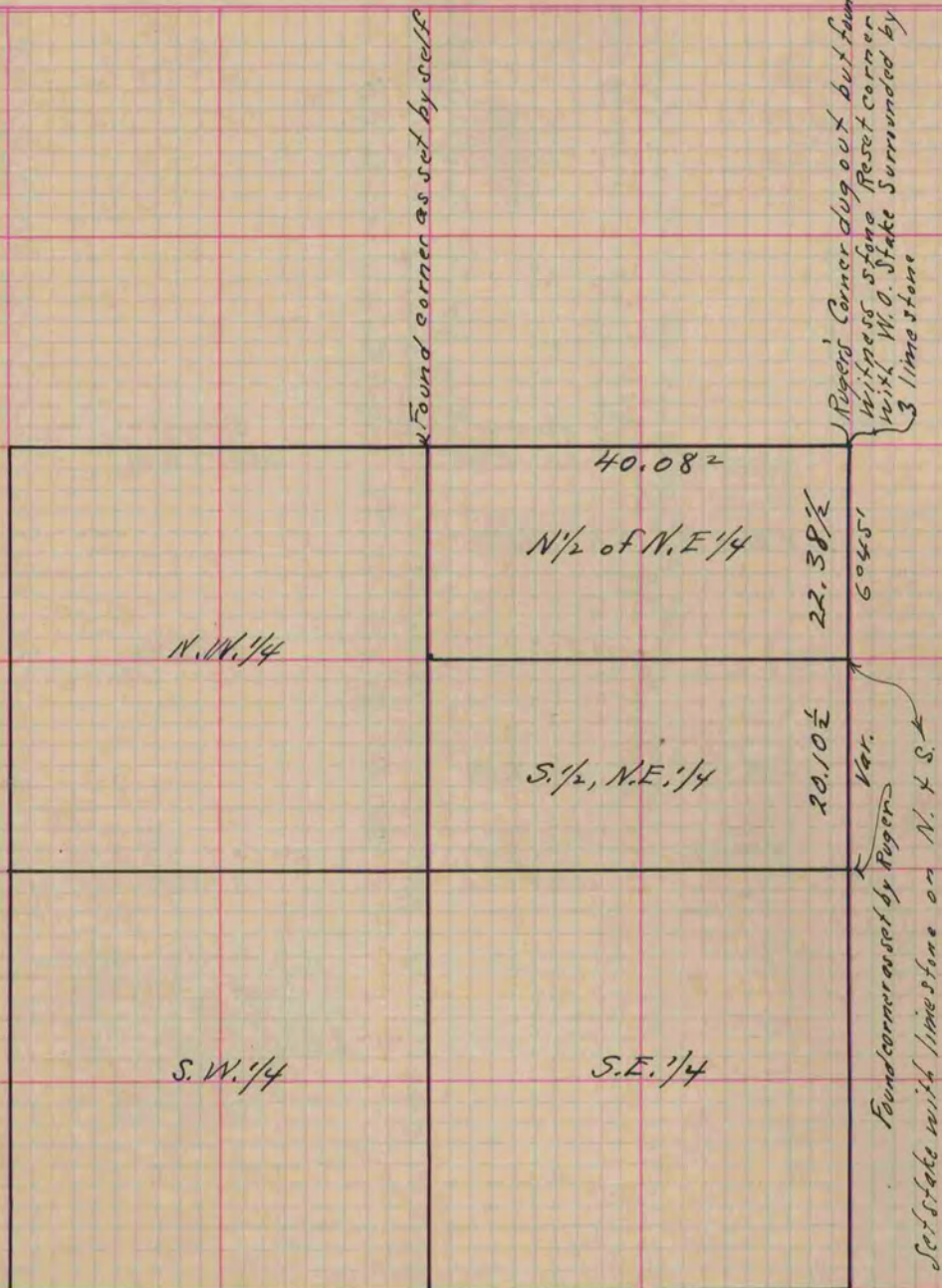
Rock County, Wisconsin, made September the 24 1867

I hereby certify that the following is a correct record of said survey as made by me.

COUNTY BUILDING CITY OF JANESVILLE

(Signed) S. D. Locke

County Surveyor.



Copied from Page 249 Vol. 1. Original County Surveyors Record