

MICROFILMED

PLAT AND RECORD

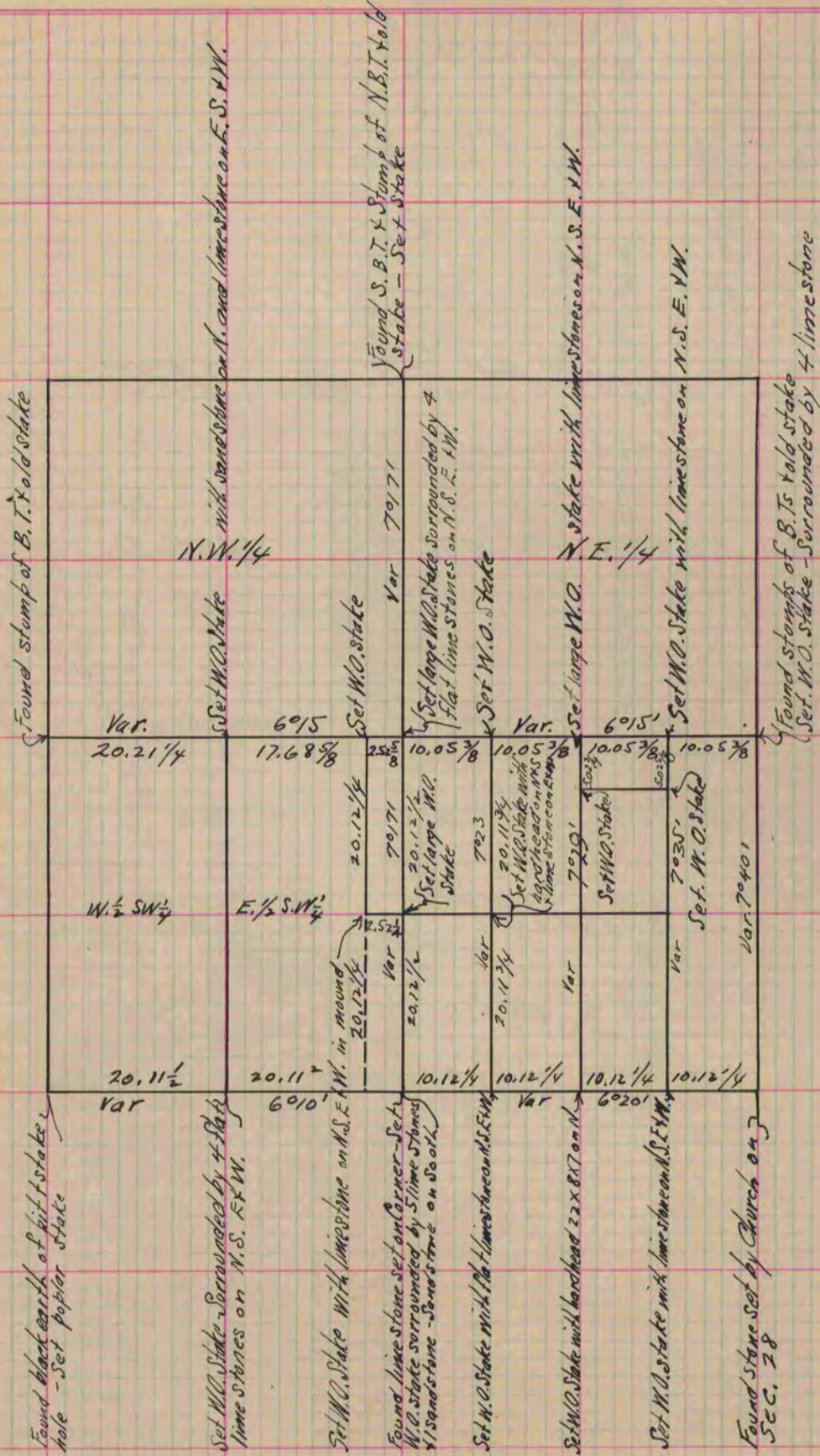
Of a Survey on Section 20 T 2 R 11 E. of the 4 P. M. in Plymouth Township  
Rock County, Wisconsin, made May the 15<sup>th</sup> 1867

COUNTY BUILDING  
CITY OF JANESVILLE

I hereby certify that the following is a correct record of said survey as made by me.

(Signed) S. D. Locke  
R. H. B.

County Surveyor.



Copied from Page 247 Vol. 1. Original County Surveyors Record