

PLAT AND RECORD

MICROFILMED

Of a Survey on Section 9 T 2 R 11 E. of the 4 P. M. in Plymouth Township

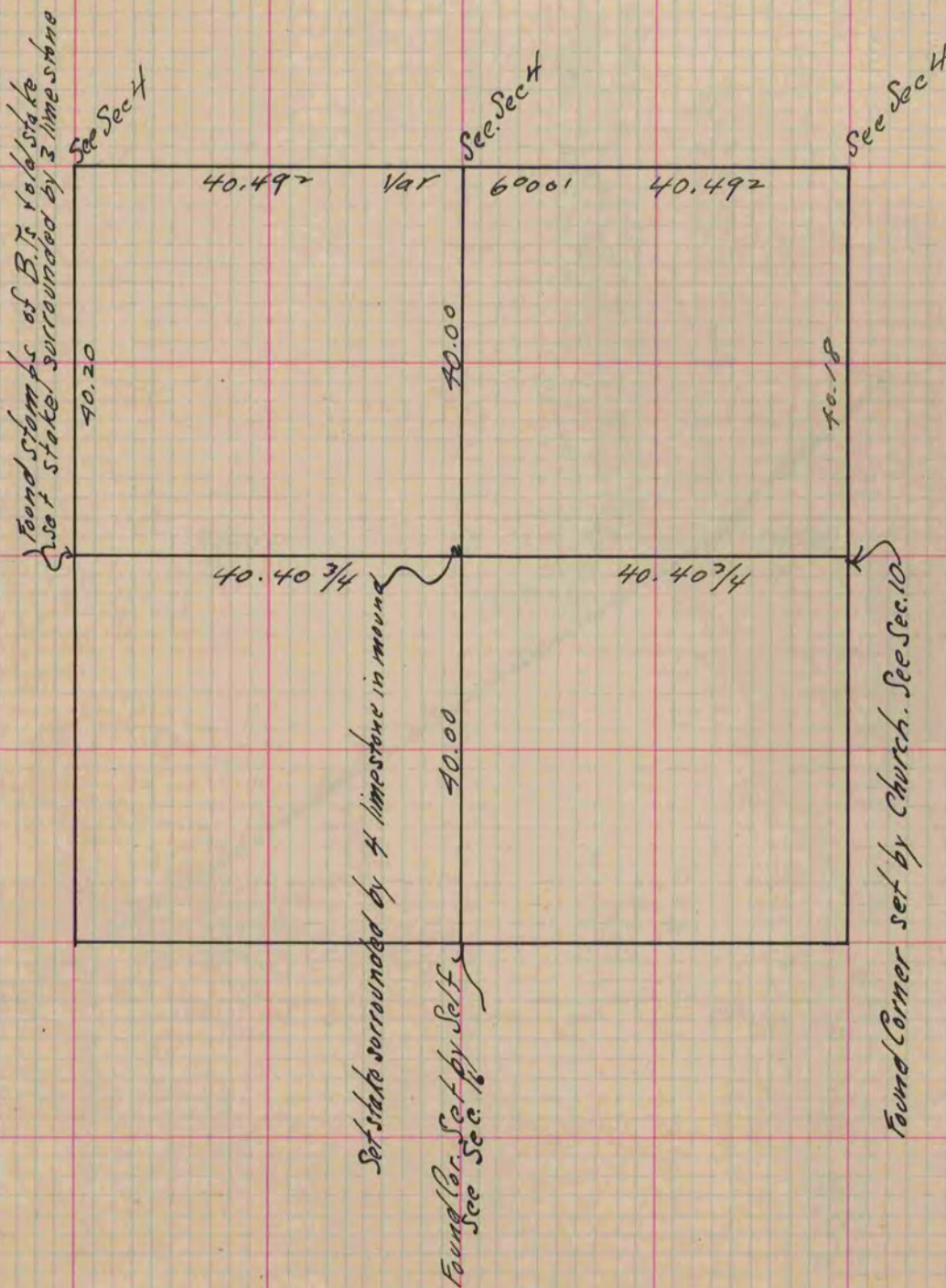
Rock County, Wisconsin, made Dec. 28th the 1866

I hereby certify that the following is a correct record of said survey as made by me.

COUNTY BOARDING
CITY OF JANESVILLE

(Signed) S. D. Locke
R. H. B.

County Surveyor.



Copied from Page 243 Vol. 1. Original County Surveyors Record