

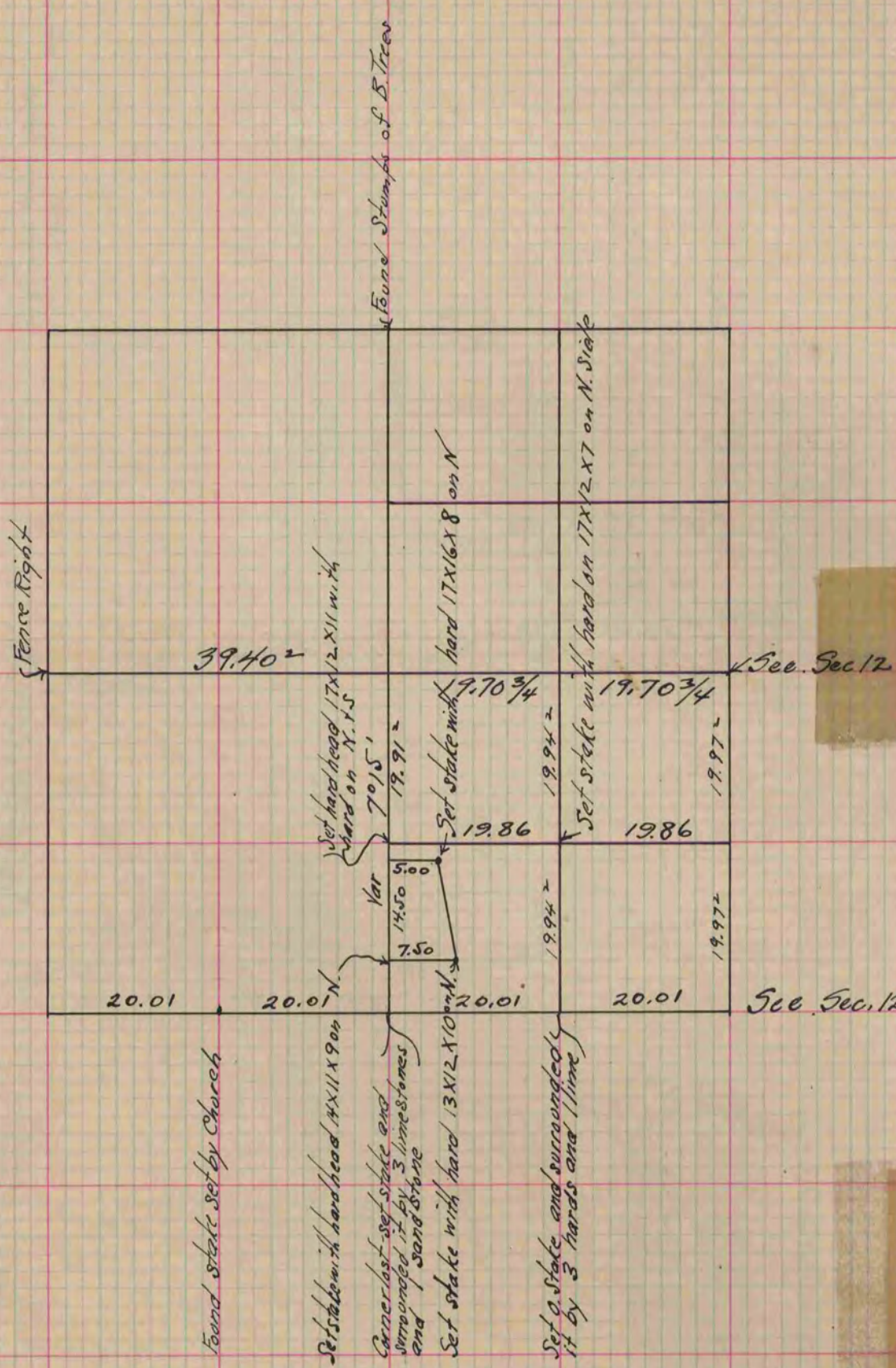
# MICROFILMED PLAT AND RECORD

Of a Survey on Section 11 T 2 R 11 E. of the 4 P. M. in Plymouth Township  
Rock County, Wisconsin, made July the 6<sup>th</sup> & 7<sup>th</sup> 1865

I hereby certify that the following is a correct record of said survey as made by me.

COUNTY BUILDING  
CITY OF JANESVILLE

(Signed) J. D. Locke  
R. M. B. County Surveyor.



Copied from Page 221 Vol. 1. Original County Surveyors Record